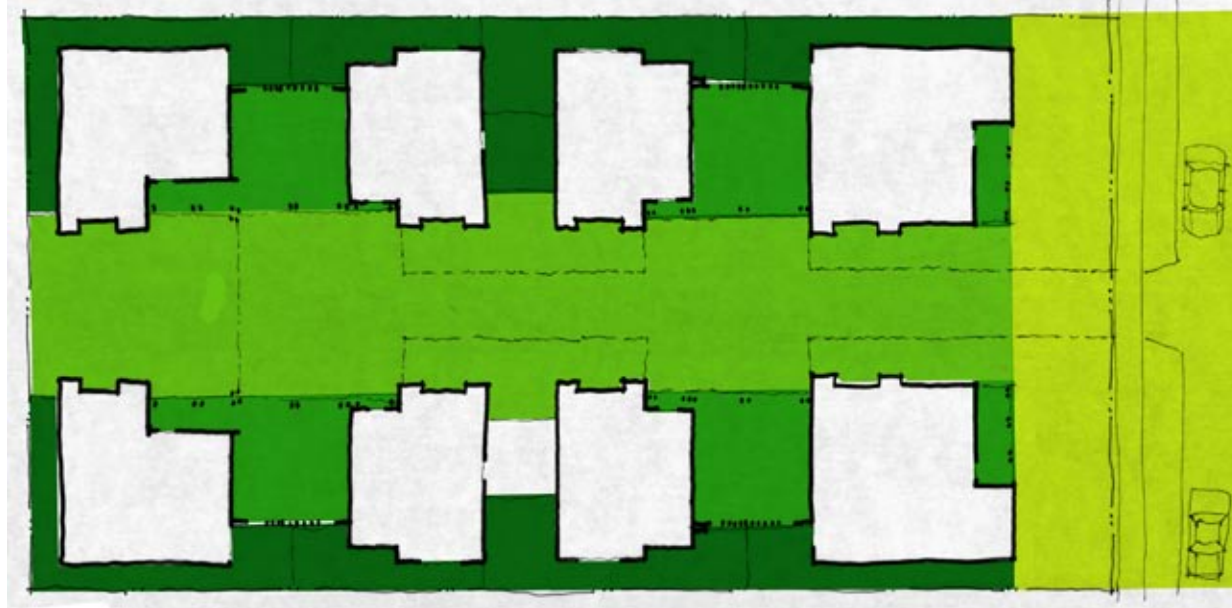


EASTERN COMMON

Eastern Portland Infill Site, R2 Zoning

To create a variety of functional, affordable homes for families, this proposal utilizes highly conventional materials (single hung windows, cement-board siding, composition shingles and a brick veneer base), carports (in lieu of finished garages) that dually function as covered outdoor auxiliary spaces and two-family buildings (which have simpler building code requirements than multifamily buildings).

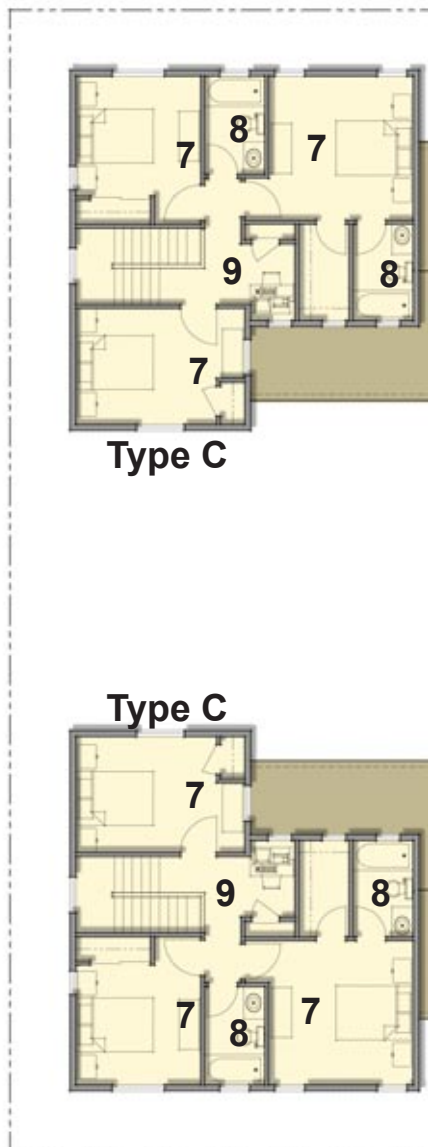
- 8 Homes: (2) Type A, (4) Type B, (2) Type C
 Type A 1,351 enclosed sqft (3 bedrooms, 2 baths, 2 floors)
 Type B 1,890 enclosed sqft (4 bedrooms, 2.5 baths, loft, 3 floors)
 Type C 1,486 enclosed sqft (4 bedrooms, 3 baths, loft, 2 floors)
 Lot Coverage: 46.8% (includes porches and carports)
 Building Area: 13,234 enclosed sqft Max. Height: 31'-9" at Type B



Public to Private
 A courtyard community featuring a range of open spaces: open-air carports and covered porches that expand shared court and common green) allowing flexible and creative inhabitation of the range of public, semi-public, semi-private and private outdoor opportunities (left di



SHARED COURT ELEVATION



LEGEND

- | | | | |
|---------------|--------------------------|--------------------------|--|
| 1 Front Porch | 5 Carport | 9 Computer Loft/Playroom | 13 Laundry |
| 2 Living Room | 6 Private Patio | 10 Shared Court | 14 Stormwater Planters |
| 3 Dining Room | 7 Bedroom | 11 Common Green | 15 Drivable, permeable lawn adjacent to paving |
| 4 Kitchen | 8 Bathroom/Half Bathroom | 12 Playscape | 16 On-Street Parking |

SITE PLAN / FLOOR 01

