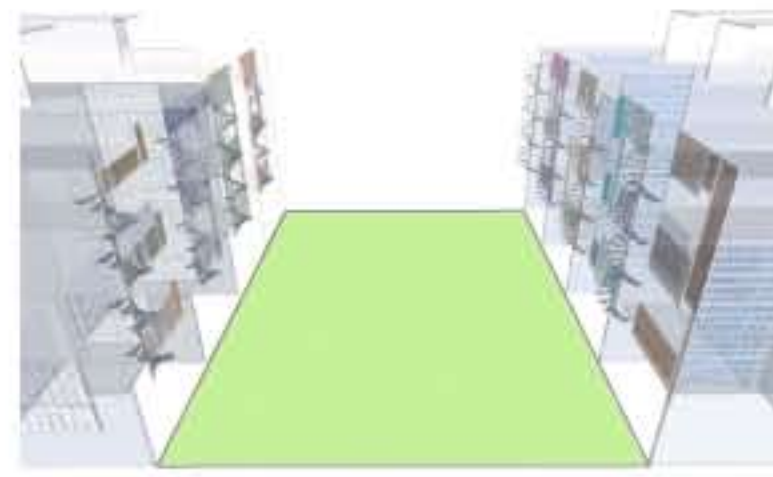


Flex-Facades

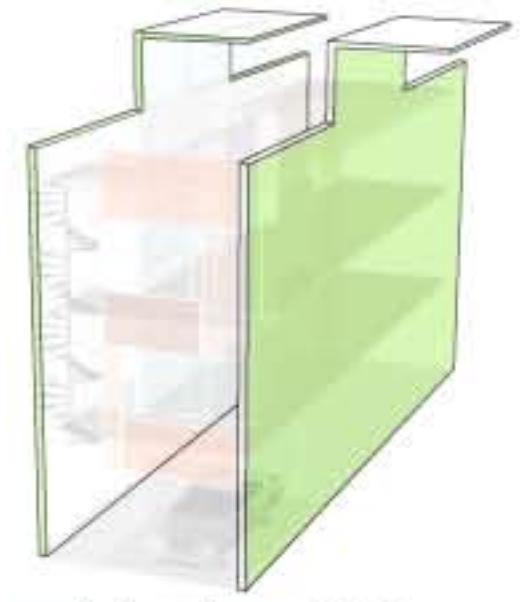
Eastern Portland Infill Site

Flex-Facades is an 8 unit, condominium dwelling that balances the needs of family and community. The project was designed to create an affordable dwelling for low-to-mid income families by building only the essentials. The majority of the site has been preserved as a shared court constructed of flexible porous pavers that can be used for parking as well as play. A spiral staircase attaches to each unit allowing for easy access to family roof gardens from below. A system of recycled resin panels clads each structure, giving identity to family and community alike.

8 units @ 2600 sf
47% site coverage
max height 40'



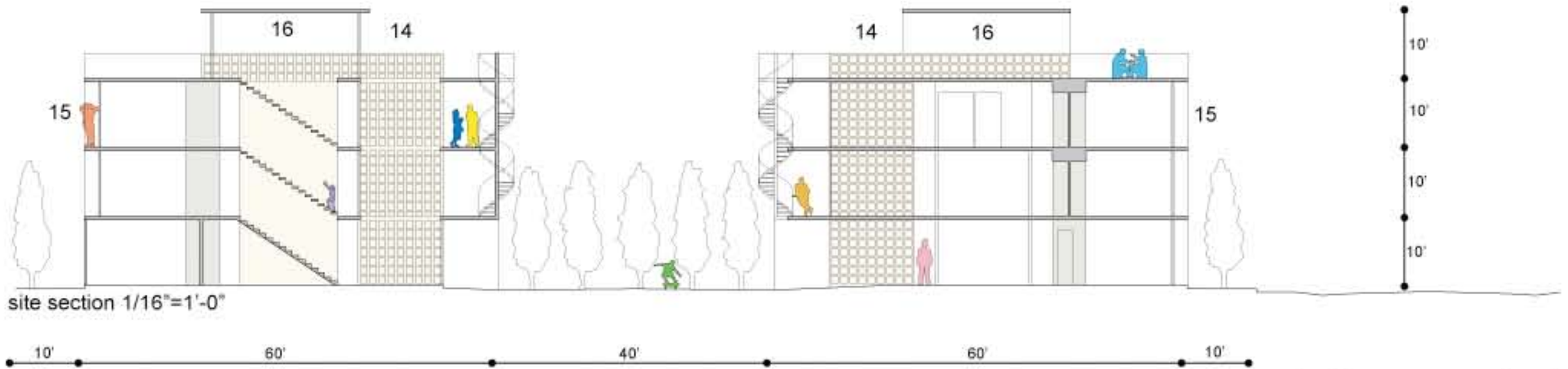
Minimize footprint, maximize shared court.



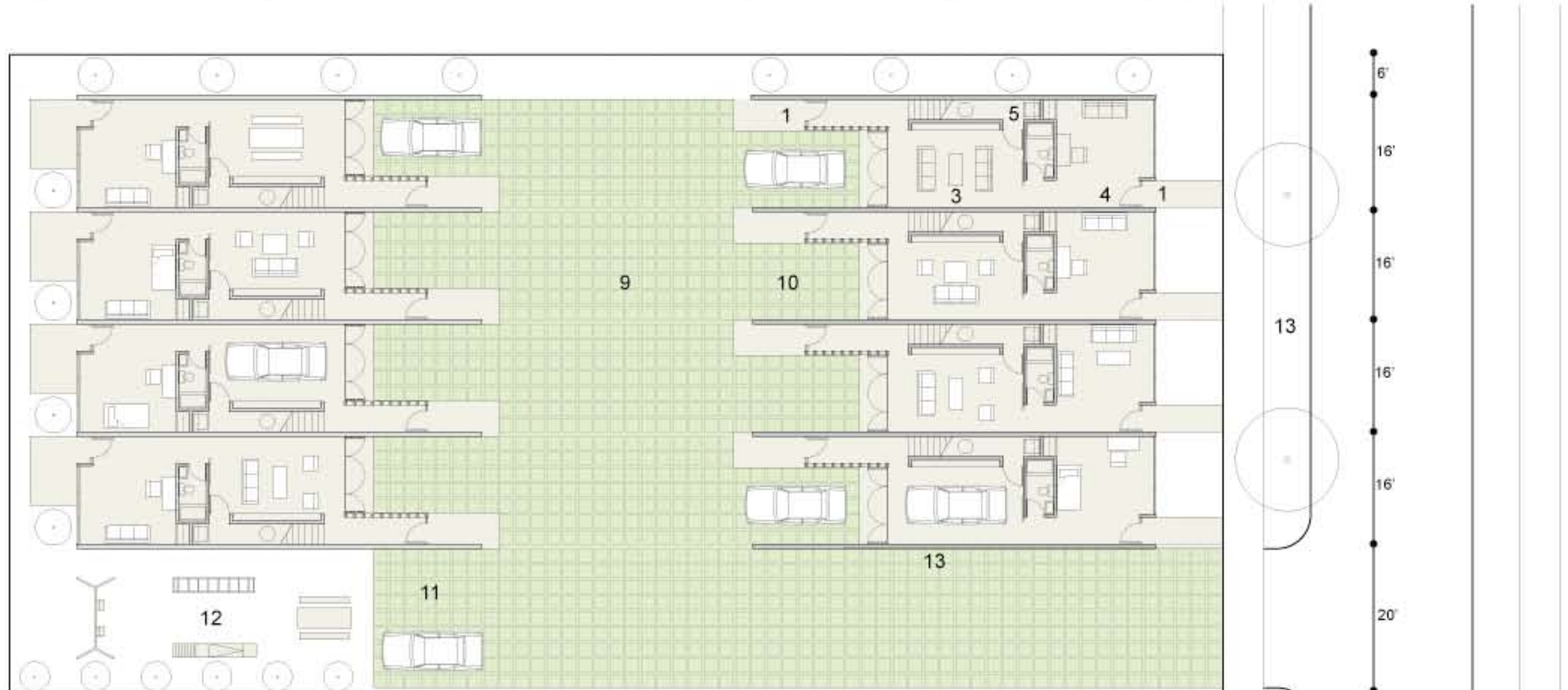
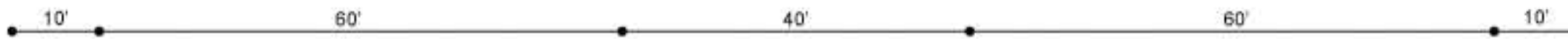
Precast structure minimizes cost, maximizes efficiency.



street perspective



site section 1/16"=1'-0"



site plan 1/16"=1'-0"

