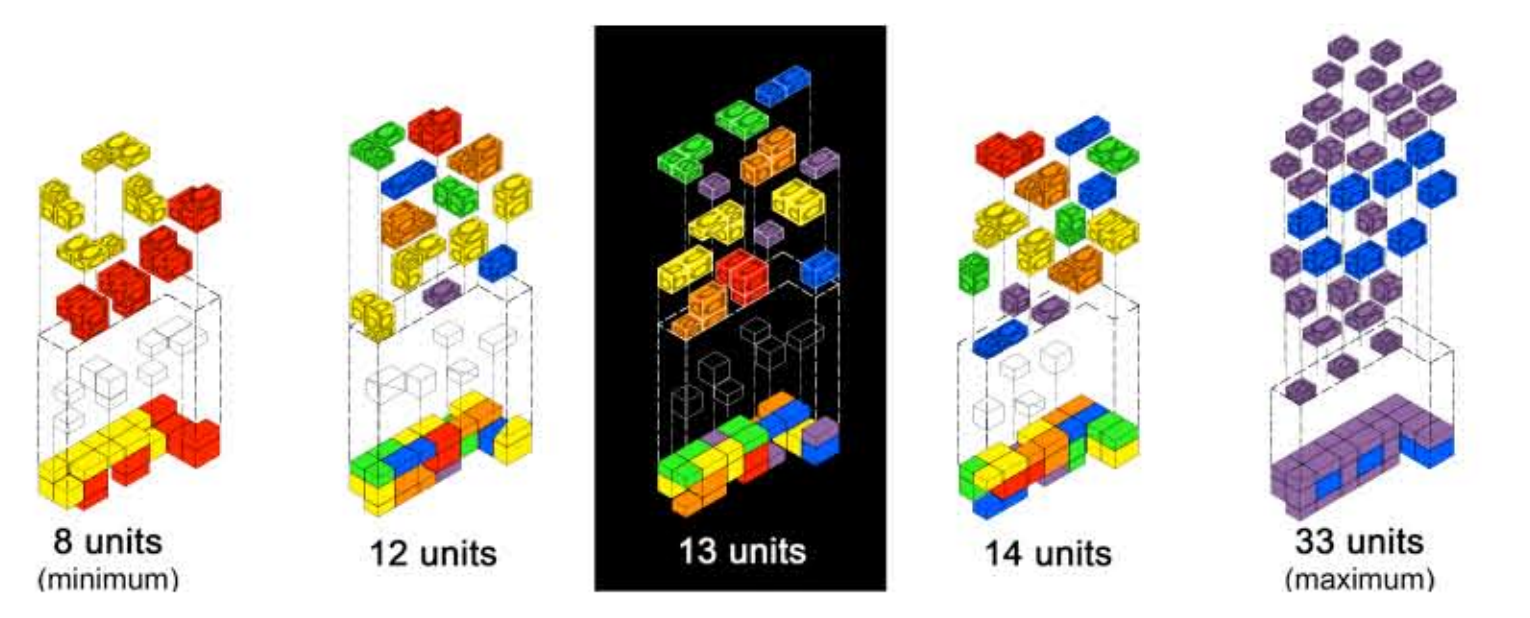
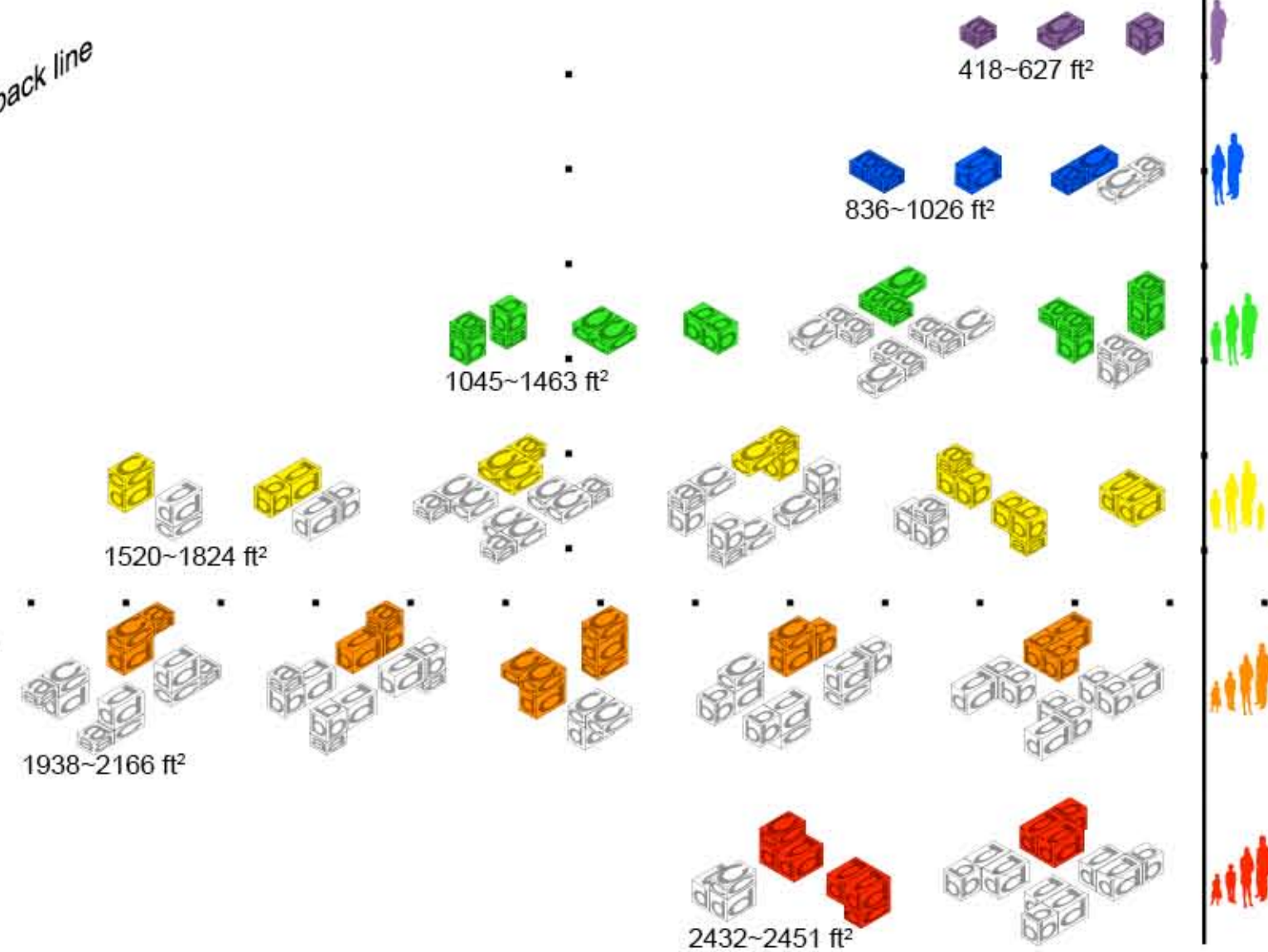
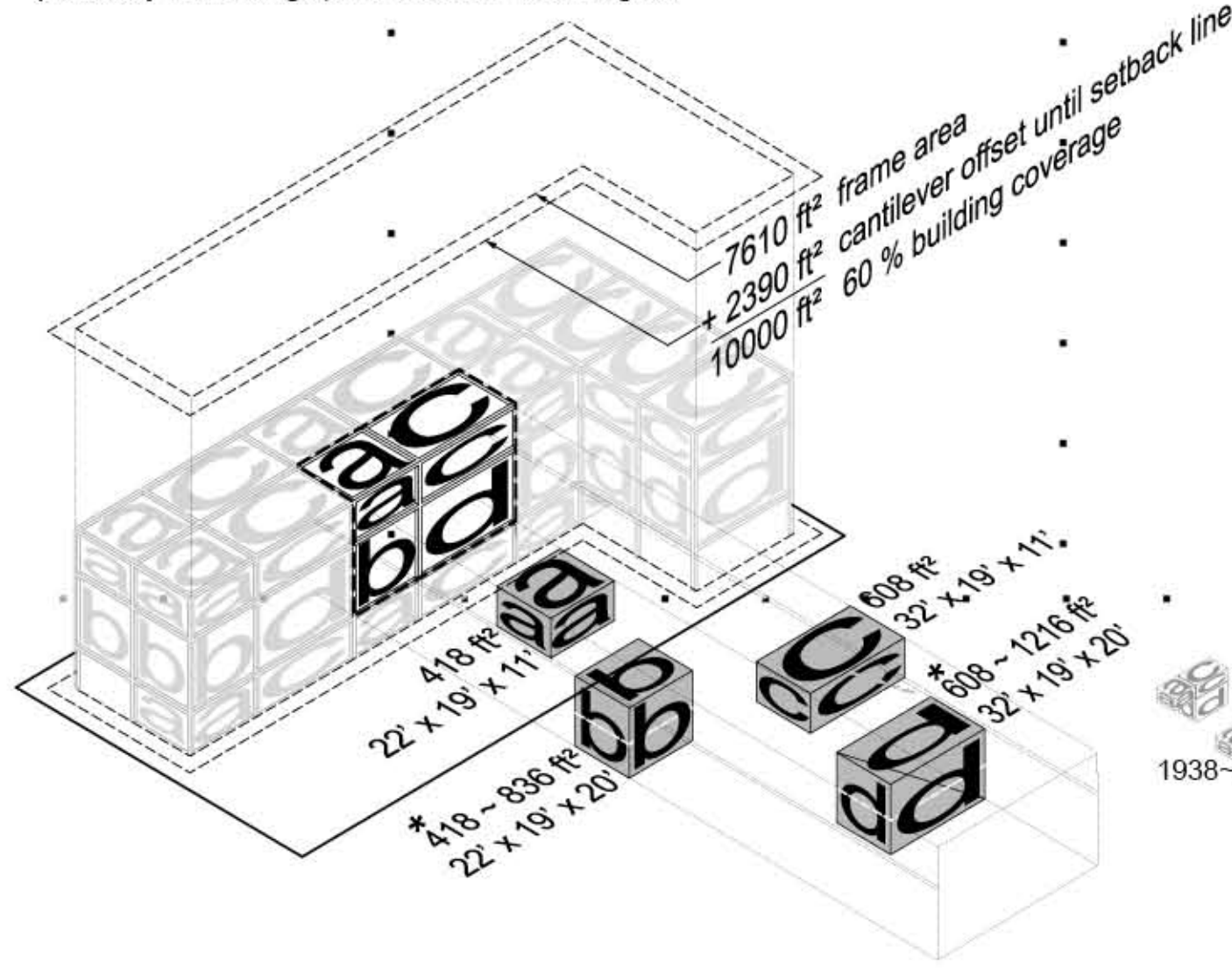
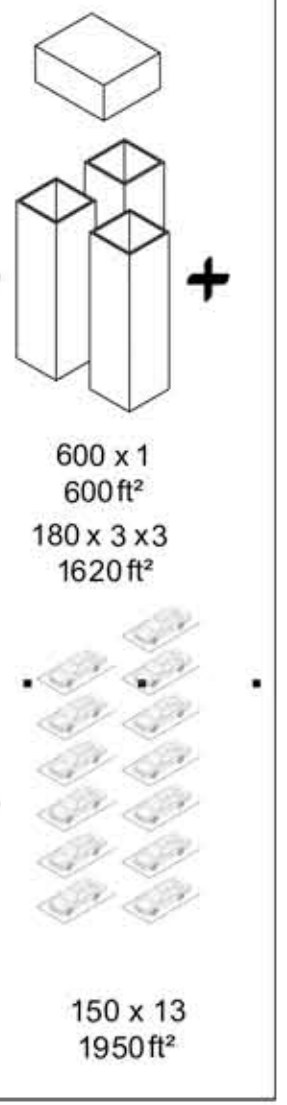
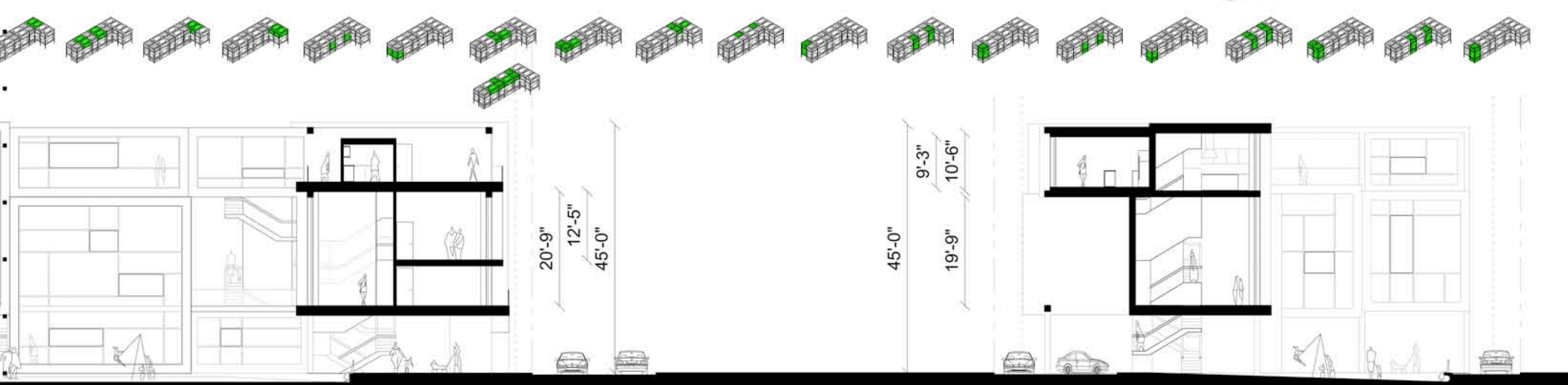


* possibility of two single, one double or both heights



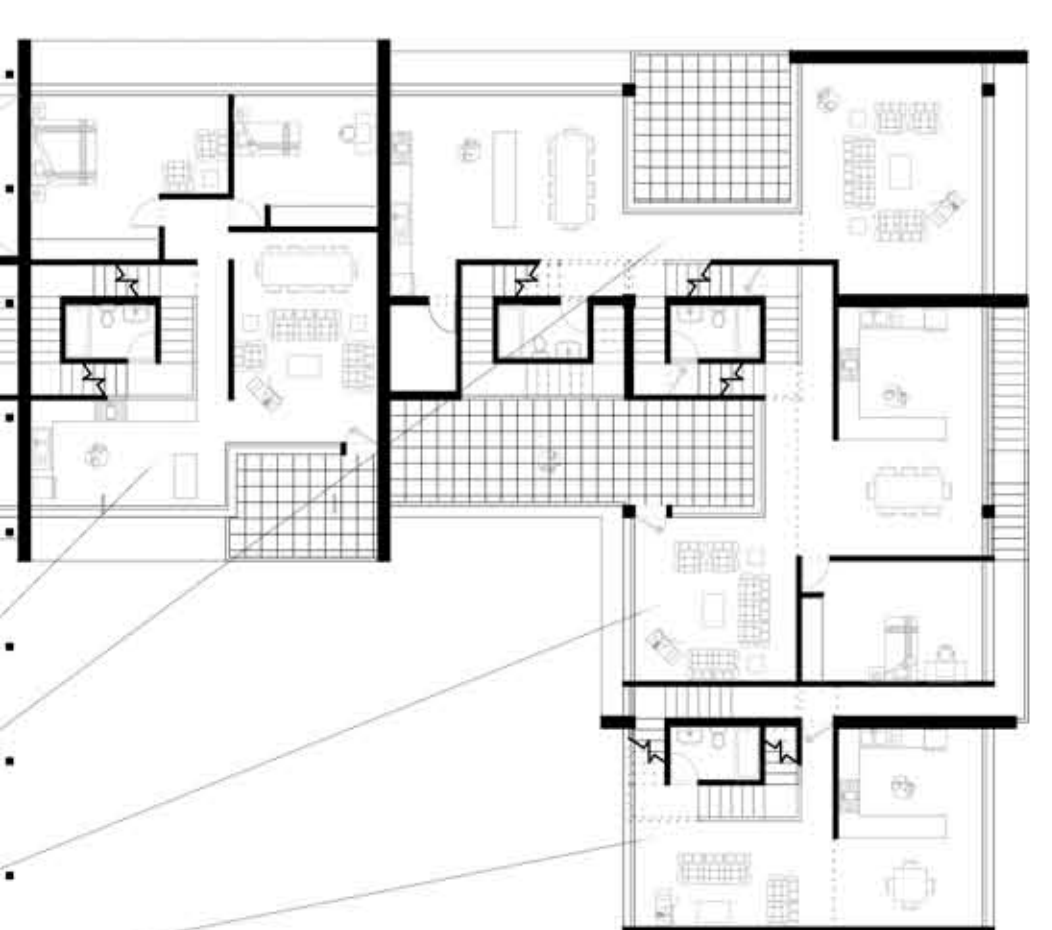
PORTLAND
COURTYARD HOUSING
DESIGN COMPETITION

10781182-E S

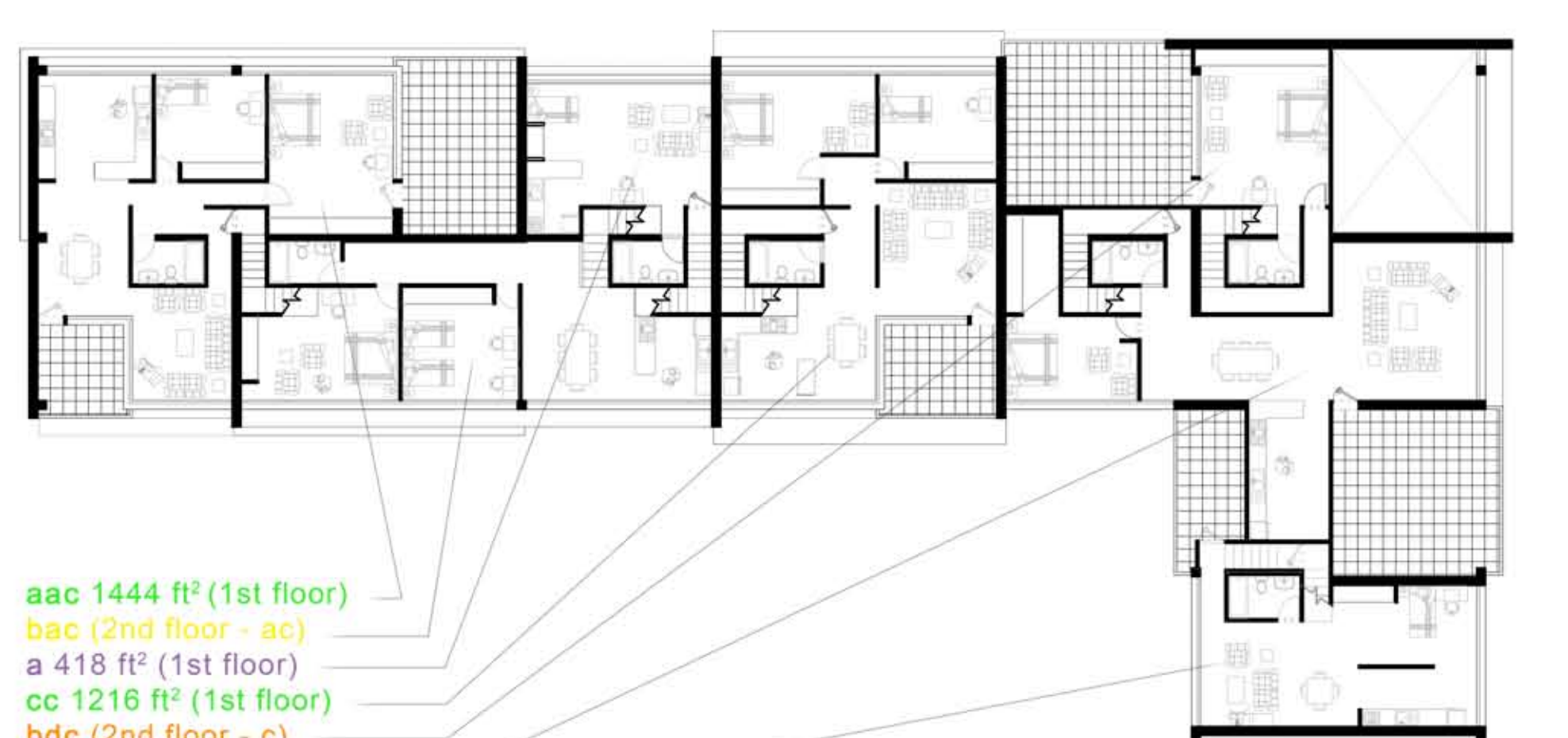


section bb

section aa



second floor plan



third floor plan

- aac 1444 ft² (1st floor)
- bac (2nd floor - ac)
- a 418 ft² (1st floor)
- cc 1216 ft² (1st floor)
- bdc (2nd floor - c)
- ac 1026 ft² (1st floor)
- c 608 ft² (1st floor)