

CATEGORY: EASTERN PORTLAND INFILL SITE
TITLE: GREEN GARDENS EAST

NARRATIVE: Green Gardens East, with shared courtyard, provides eleven family homes, including one handicapped accessible home. Exterior colors define the homes. Each home has private green roof garden or plant balcony. Shared green community areas include vegetable garden, tot lot, children's play, adult sitting, and vehicular/pedestrian courtyard with permeable pavers. The ground surface is devoted to community amenities. Storm water management is under the surface, collecting reusable rain water. Photovoltaic glass stair walls, photovoltaic roof panels, cross ventilation, skylight ventilation, maximum natural light, affordable wood frame structure, renewable construction materials are included.

OWNERSHIP OPTIONS: Fee-simple parcel ownership with homeowner association for shared community land or condominium arrangement for both homes and community land.

DATA: Total Square Footage of Each Unit Type

Features	3BR Handicapped	3BR Type A	3BR Type B	4BR with Studio Apt.
Primary Unit	1,218 s.f.	1,653 s.f.	1,977 s.f.	1,938 s.f.
Garage	294 s.f.	231 s.f.	231 s.f.	231 s.f.
Rental Studio Apt.	0 s.f.	0 s.f.	0 s.f.	259 s.f.
Total Enclosed SF for Each Unit Type	1,512 SF	1,884 SF	2,208 SF	2,428 SF
Exterior Balcony or Roof Garden	468 SF	544 SF	220 SF	120 SF

Total Number of Units: 11

3BR Handicapped: 1

3BR Type A: 3 3BR Type B: 3

4BR with Studio Apt.: 4

Total Square Footage: 25,120 Square Feet

* Total Lot Coverage: 44%

Maximum Height: 38 Feet

* Note: Building coverage, including balconies, is 7,519 s.f.



VEGETABLE GARDENS - WEST



TOT LOT + ADULTS - NORTH



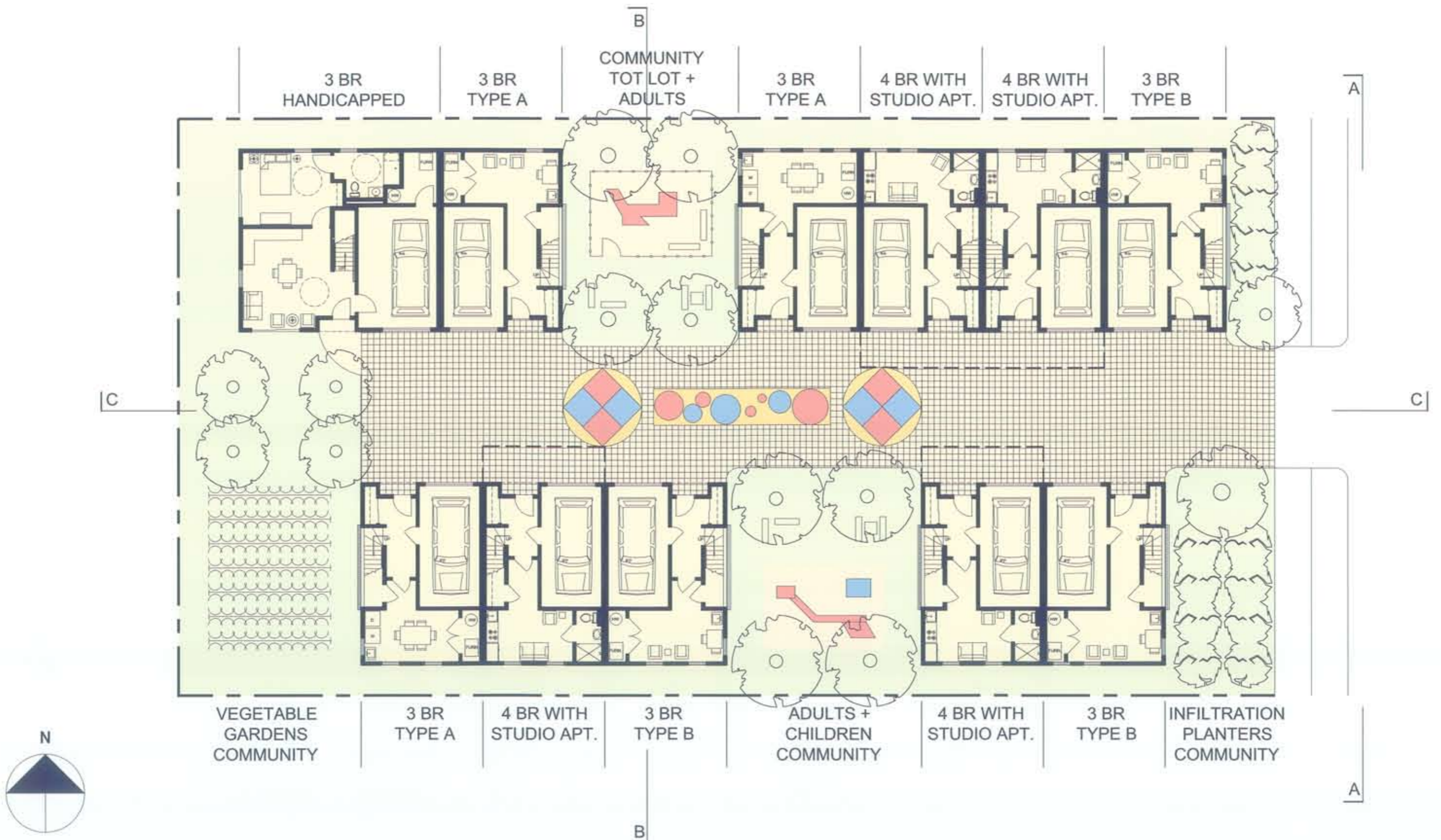
ADULTS + CHILDREN - SOUTH



MODEL OVERVIEW



STREET ENTRY - EAST



SITE PLAN WITH FIRST FLOOR PLANS

