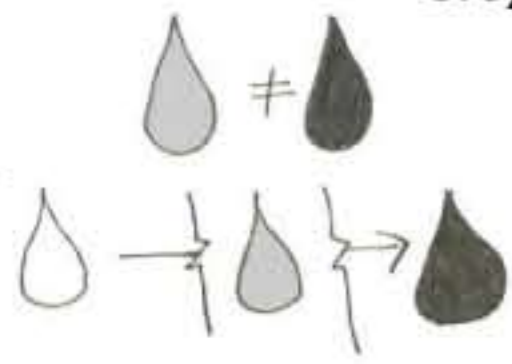
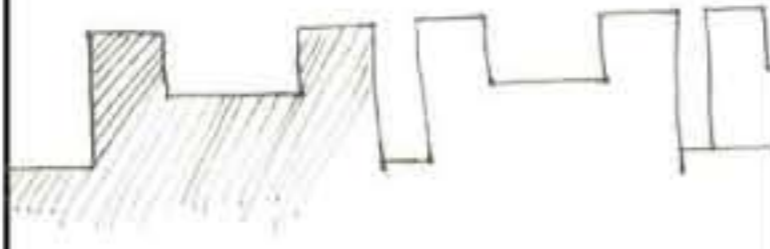


**Greywater**



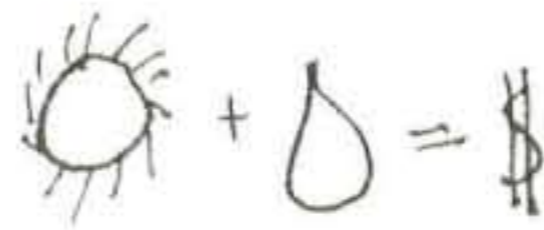
The ability to locally produce and treat food, water and energy would yield a much more sustainable society. The composting, garden space, quantum heat pump, and greywater systems are steps toward being independent.

**Heartbeat**



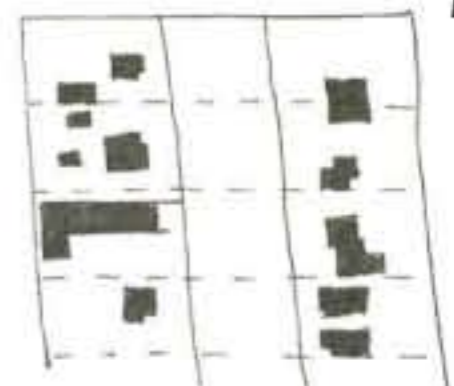
The irregular roofscape of these houses allows for multiple levels of social interaction, from large gatherings on the ground level to an intimate meeting between neighbors on their shared courtyard.

**Making Green**



Harvesting the fruit of nature not only helps the environment, but also the budget. The quantum heat pump, solar hot water heating, southern exposure, and greywater systems are designed to save owners on utility bills.

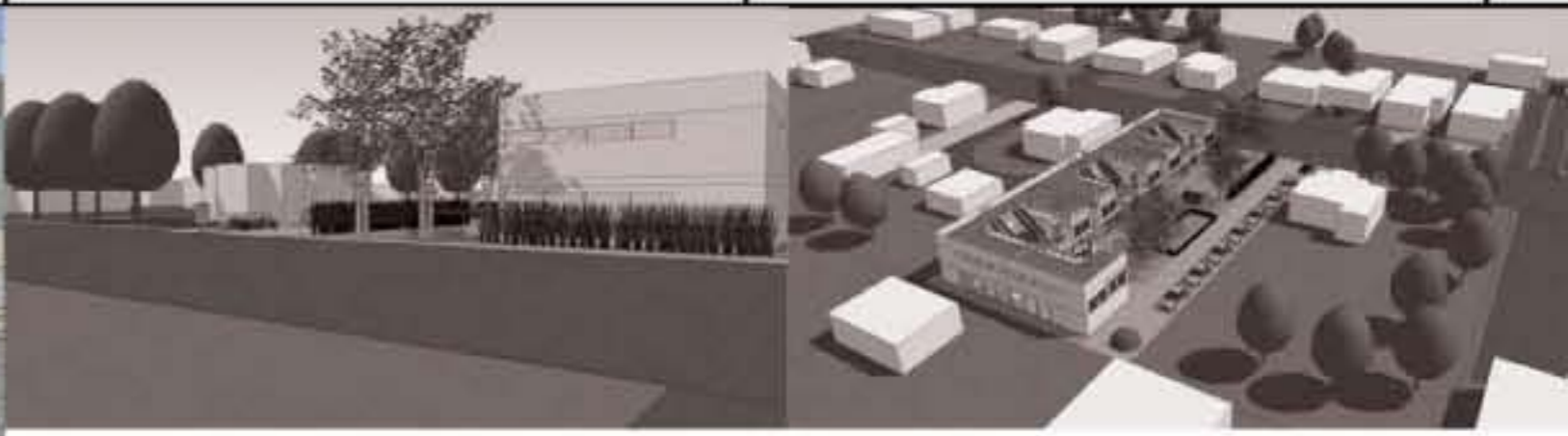
**Fitting In**



Densifying the inner site while maintaining a healthy streetfront relationship, this design provides the density needed to be cost effective, yet leaves enough site open so as not to clutter a context that is more spread



Vegetative Boundary Doors to Courtyard Privacy and Light Fall-proof railings



Compliments Est. Metering Trees to match context Pedestrian friendly front Low roof to match 1-story



Second Floor Plan Scale :: 1/16" = 1'



Longitudinal Axonometric Section Scale :: 1/16" = 1'



First Floor Plan Scale :: 1/16" = 1'



Lateral Section Perspective Scale :: ~1/16" = 1'