

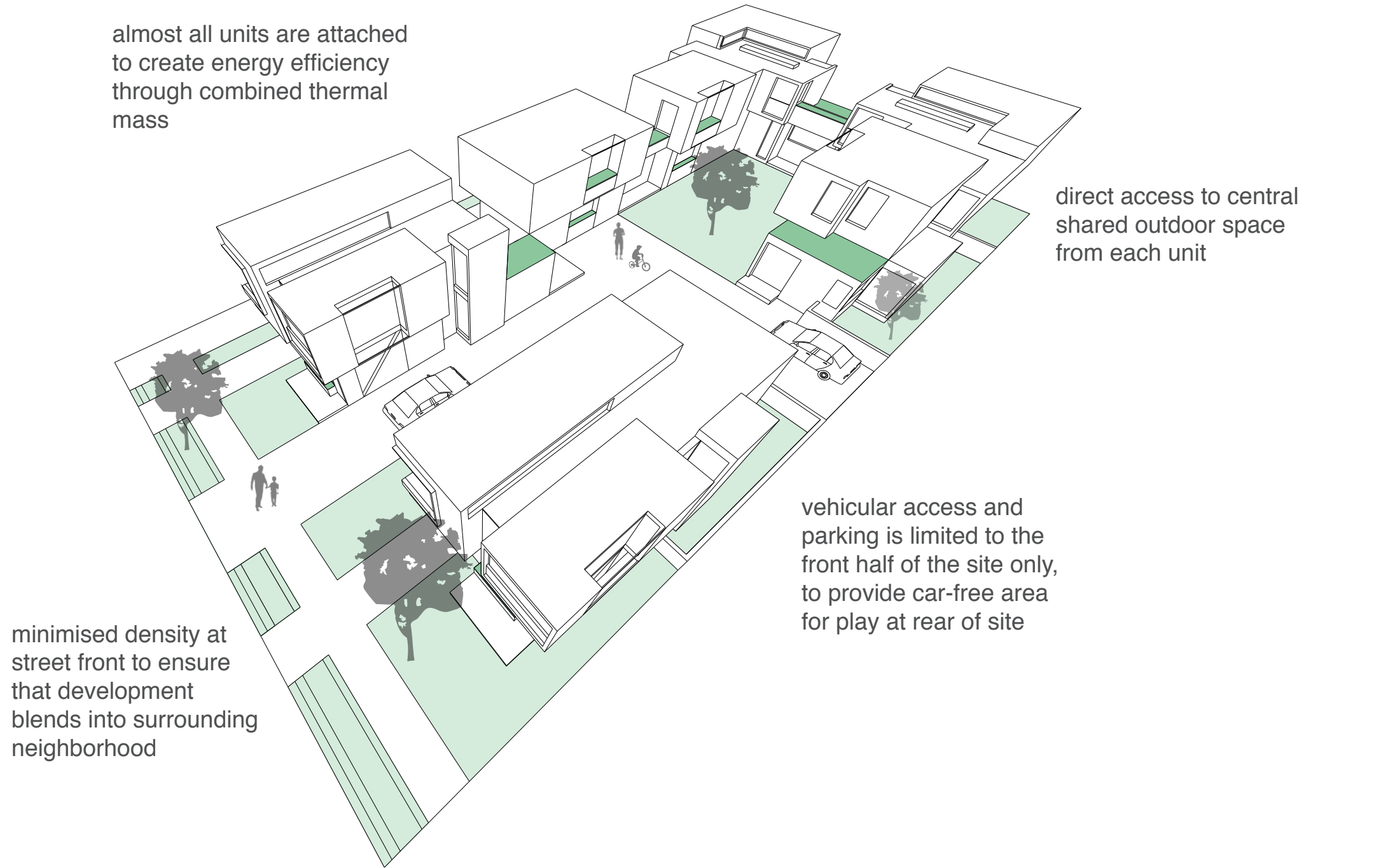
# Public + Private Courtyards

## Eastern Portland Infill Site

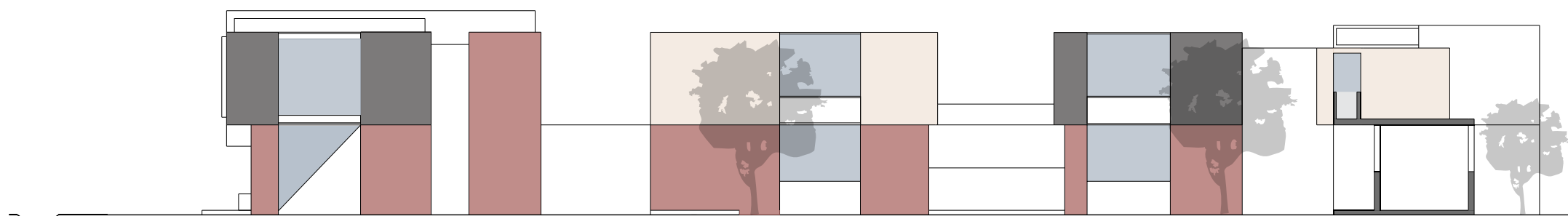
This scheme addresses the importance of both public and private outdoor space. The generous central public courtyard (made up of a combined shared court and common green) is complemented by private courtyards for each unit. Lower storeys are constructed from brick and upper storeys are constructed from metal or fibre-cement cladding, providing both thermal mass for energy efficiency alongside more affordable materials. Each unit has at least three bedrooms and two bathrooms. The material palette is consistent throughout the site, but the design of each unit varies slightly to ensure that each home has its own individual character.

|              |                     |
|--------------|---------------------|
| Unit 1       | 1940 sq. ft         |
| Unit 2       | 1820 sq. ft         |
| Unit 3       | 1635 sq. ft         |
| Unit 4       | 1700 sq. ft         |
| Unit 5       | 1700 sq. ft         |
| Unit 6       | 1930 sq. ft         |
| Unit 7       | 2570 sq. ft         |
| <b>Total</b> | <b>13290 sq. ft</b> |

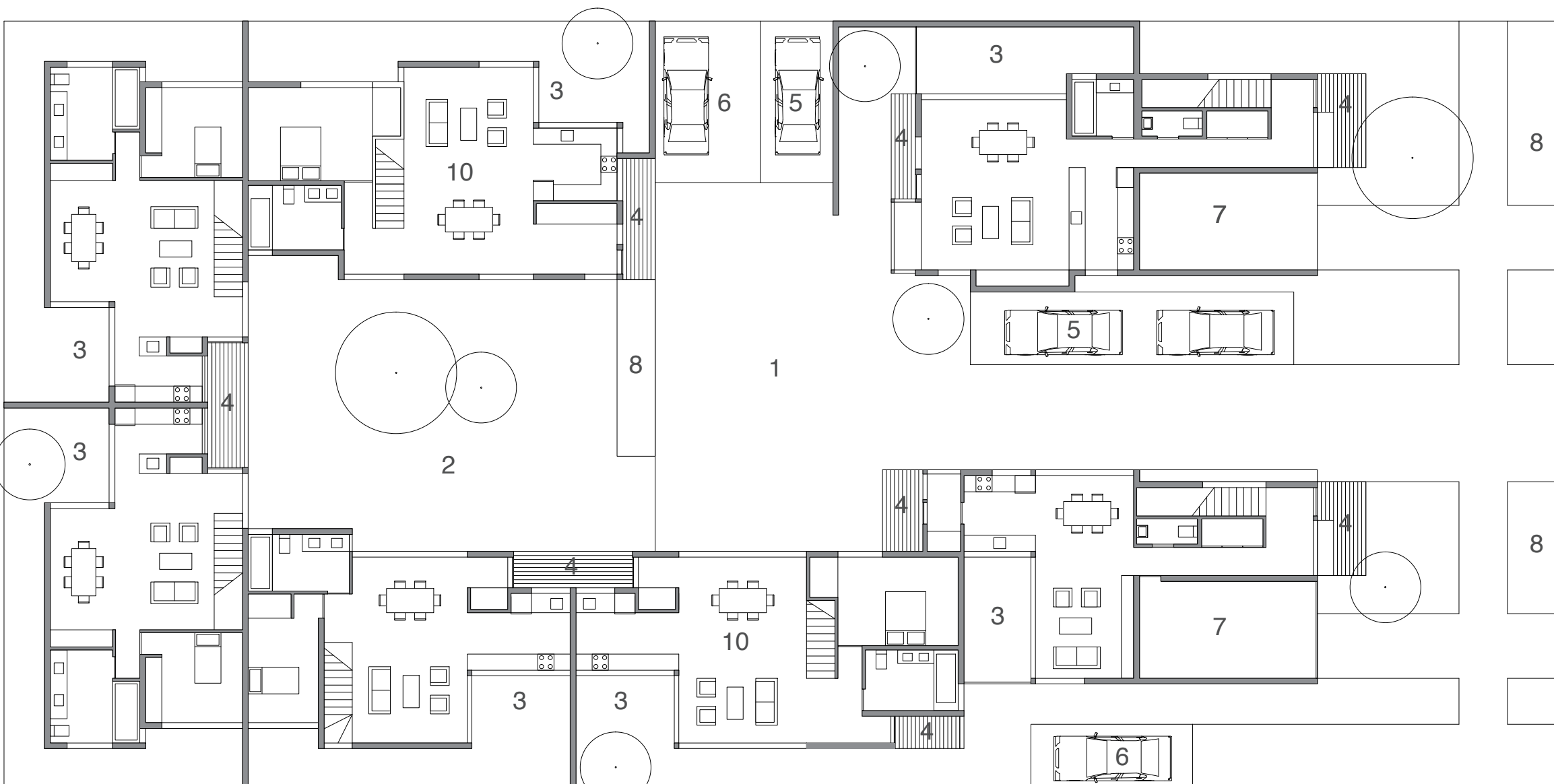
Seven (7) units total – see floor plans for unit square footage  
13,290 sq. ft total (42% building coverage), 24'-0" max. height



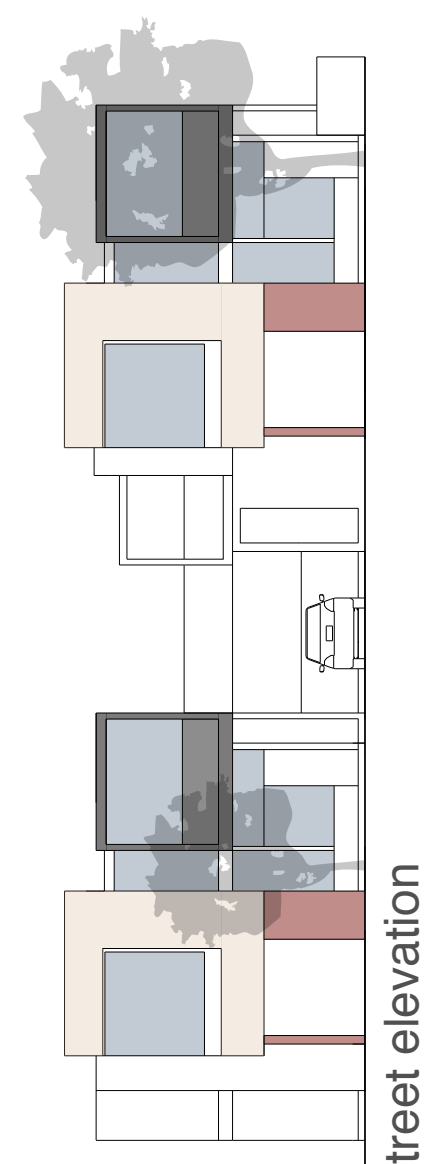
bird's-eye view of proposed development



longitudinal section looking south



first floor / site plan



street elevation