



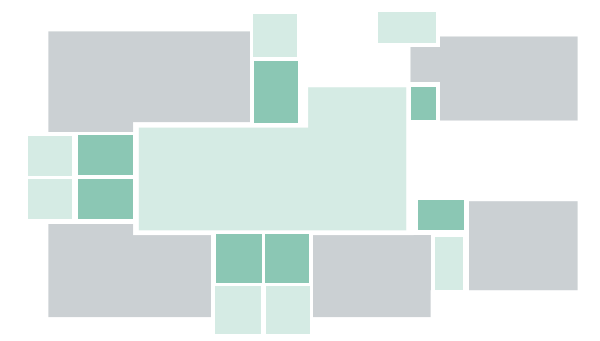
Each unit has a direct and principle entry from the central shared public "courtyard".



Each unit has its own private courtyard, which provides private outdoor space, natural cross ventilation, solar gain to interiors and views through the site of green outdoor space.



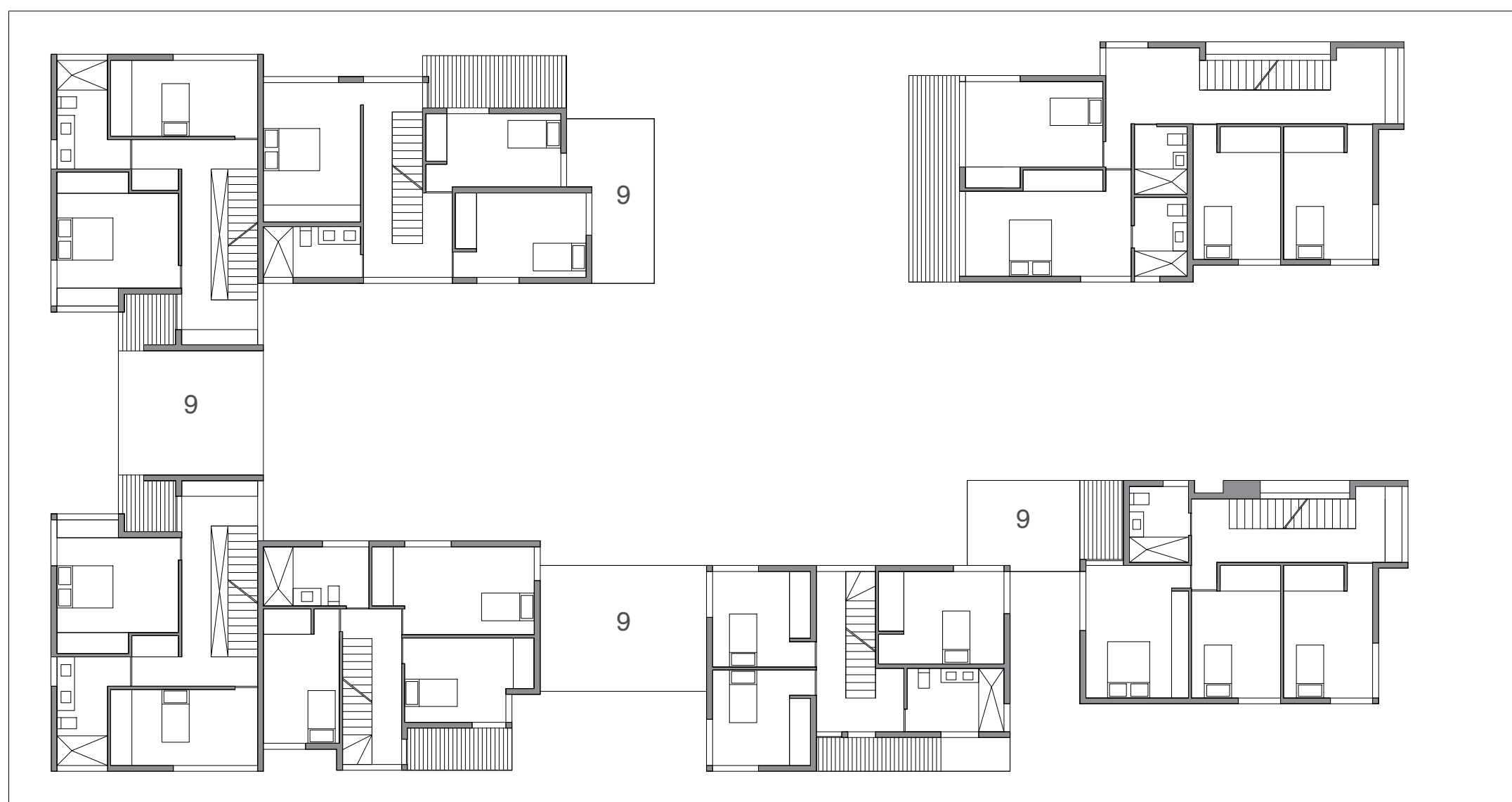
Building forms adjacent to private courtyards are single storey only to allow maximum solar gain to both public and private outdoor spaces. These one-storey structures have green roofs.



Kitchens are located adjacent to entries from central public courtyard. They provide an interface between the public and private outdoor spaces and enable parents to watch children at play.



view from street



second floor plan

- 1 shared court
- 2 common green
- 3 private courtyard
- 4 porch
- 5 car park
- 6 disabled access car park
- 7 garage
- 8 swale
- 9 green roof
- 10 disabled access unit

