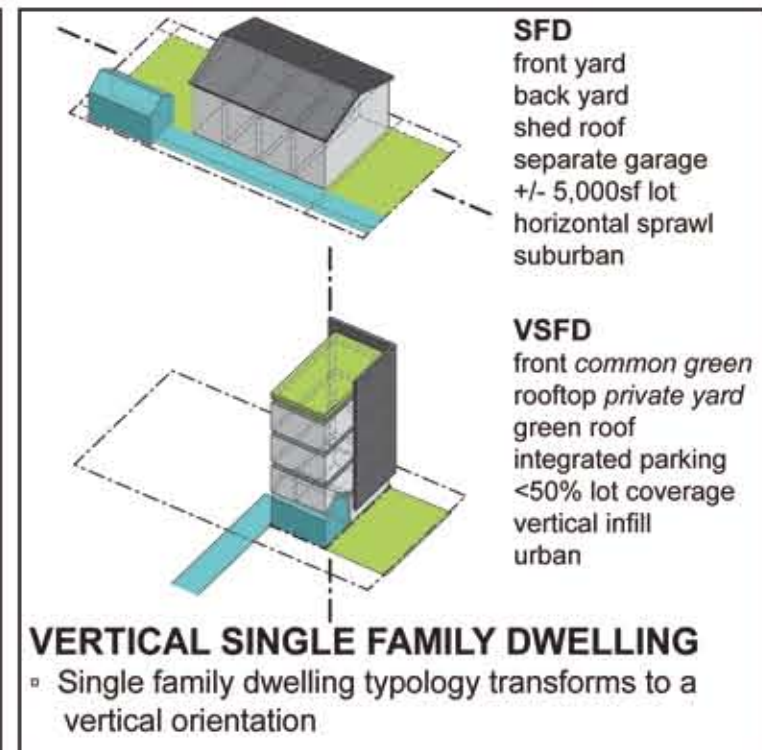
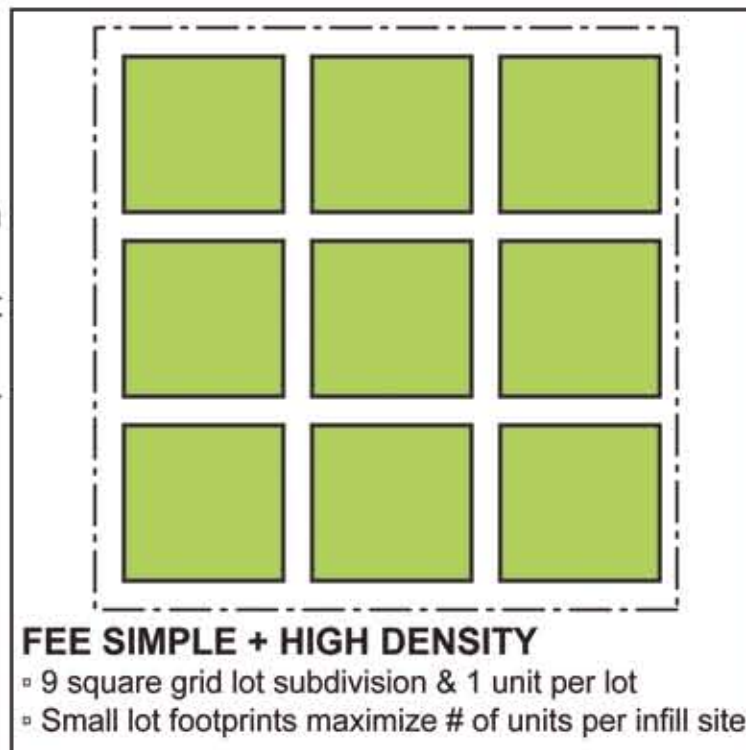


Vertical Living: densifying the single family dwelling

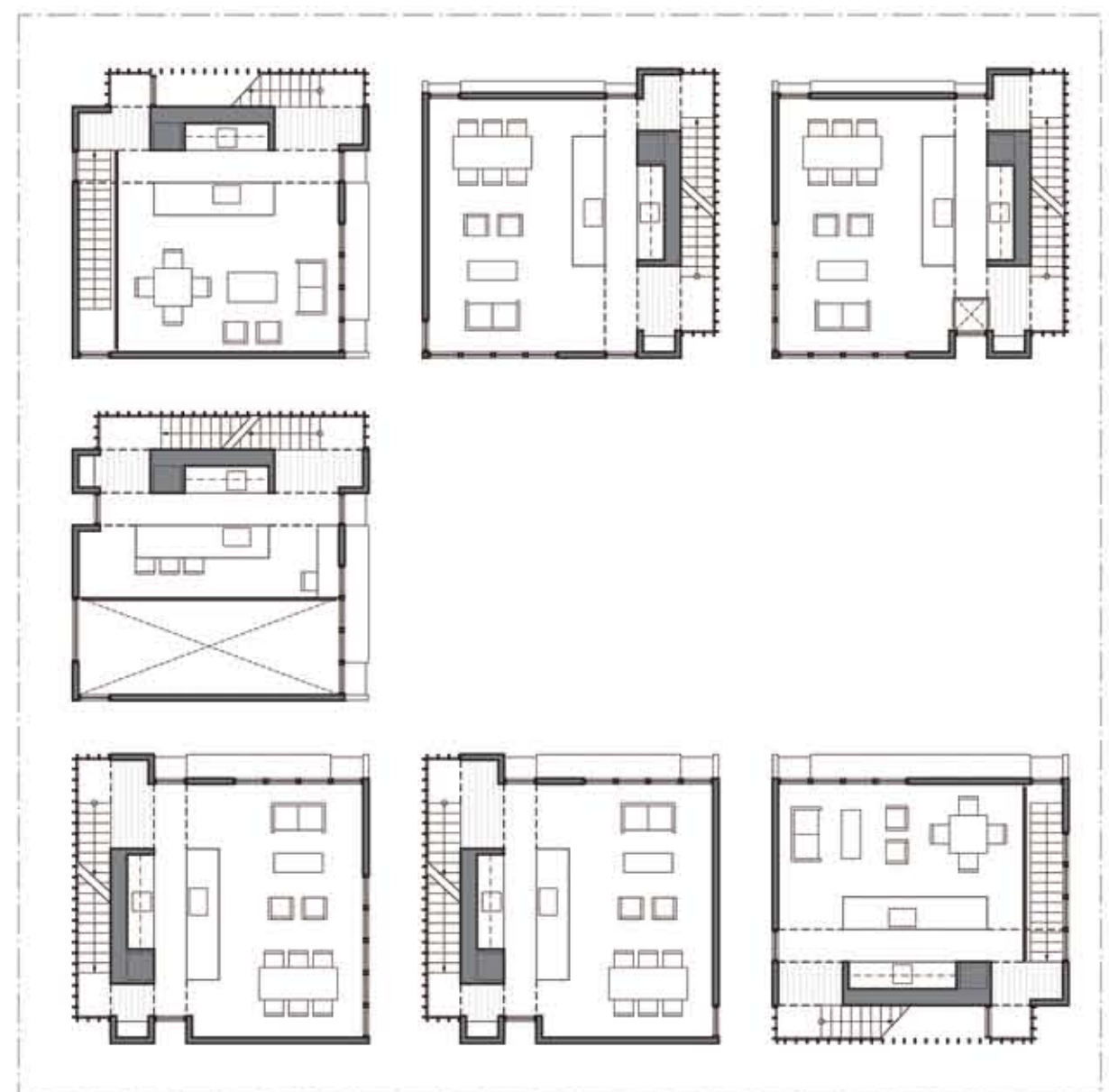
This project explores the conflict between responsible urban densification and the American dream of owning a single family dwelling (SFD). The design proposes to transform the SFD typology into a vertically organized system which provides amenities equivalent to those sought after in suburban developments while balancing the desire for privacy with the need for community. The central 'common green' provides a space of communal interaction and a pedestrian-oriented transitional zone between home and city.

- Total Number of Units: 7**
- Total Square Footage per Unit: 2,550 sf dwelling + 200 sf garage + 400 sf roof garden**
- Total Square Footage: 19,250 sf**
- Building Coverage: 51.1% (5,110 sf)**
- Building Height: 45'-0"**



SITE PLAN

- parcel lots
- stormwater management
 1. The center square of the common green doubles as an overflow stormwater retention basin.
 2. Permeable paving and generous areas of landscaping limit urban runoff.
 3. Each unit collects rainfall in its green roof.



PLAN LEVEL 2