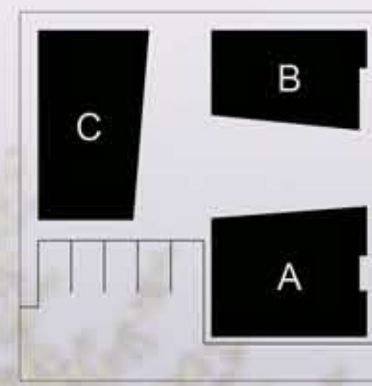


# (UN) COMMON GREEN

## INNER PORTLAND INFILL SITE

THIS PROPOSAL STRIVES TO PROVIDE AMPLE SHARED OUTDOOR GREEN SPACE WHILE SIMULTANEOUSLY ACHIEVING NICHE PRIVATE SPACES AS WELL. RESPONDING TO THE CONTEXT OF THE INNER PORTLAND NEIGHBORHOOD, TWO UNITS FRONT THE STREET TO CONTINUE THE ESTABLISHED RYTHM OF FACADES.

EACH BUILDING IS UNIQUE TO PROVIDE A VARIETY OF OPTIONS WITHIN THE SITE. COMMON SPACES ARE ADJACENT TO THE COURTYARD TO INCREASE SAFETY FOR CHILDREN PLAYING AND PROVIDE ENJOYABLE VIEWS FOR THE PEOPLE WITHIN. UNITS ARE CONSTRUCTED OF LIGHT WOOD FRAMING WITH FIBER CEMENT SIDING FOR LOW COST AND DURABILITY.



SQ. FT. PER UNIT	
A	= 1392
B	= 2040
C	= 1430
TOT SQ FT	= 3842
BLDG %	= 39
MAX HT(FT)	= 22
TOT UNITS	= 5



### STORM WATER MANAGEMENT



GREEN ROOF RETAINS AND ABSORBS WATER DURING DOWNPOURS DELAYING THE PEAK DISCHARGE.



DRY BED PAVERS FOR WALKING PATHS AND PATIOS ALLOW WATER TO SEEP INTO THE GROUND.



PERMEABLE PARKING UNITS TO ALLOW CAR PARKING AND WATER DRAINAGE



BIOSWALES FILTER THE WATER BEFORE IT LEAVES THE SITE. BY RETAINING WATER THEY REDUCE FLOODING AND HARMFUL EROSION.

