

Contained Housing

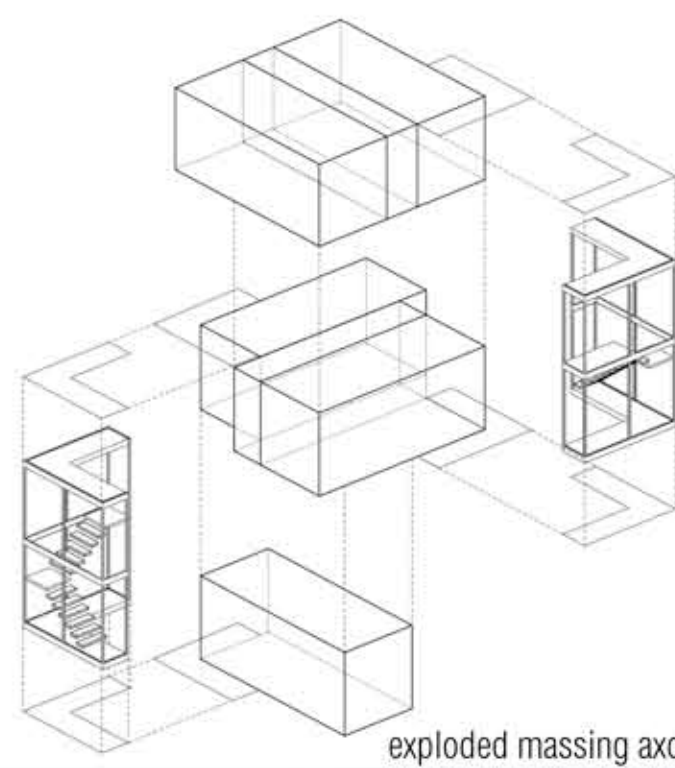
Recycled shipping containers are used to create the majority of the structure. All of the living spaces are placed within the containers. Stairs and enclosures are added to the exterior of the containers to reduce impacting the structural properties of the containers. The lower levels of the house are comprised of the more public areas while the bedrooms are situated on the top floor.

The courtyard space is defined by a large multi purpose deck area. The shape of the deck allows areas for seating, eating, playing, and community interaction. Trees are placed throughout the courtyard to provide shading for these activities. The sinuous nature of the courtyard creates an inner courtyard that can envelope the entire space while still allowing private entrances to each house.

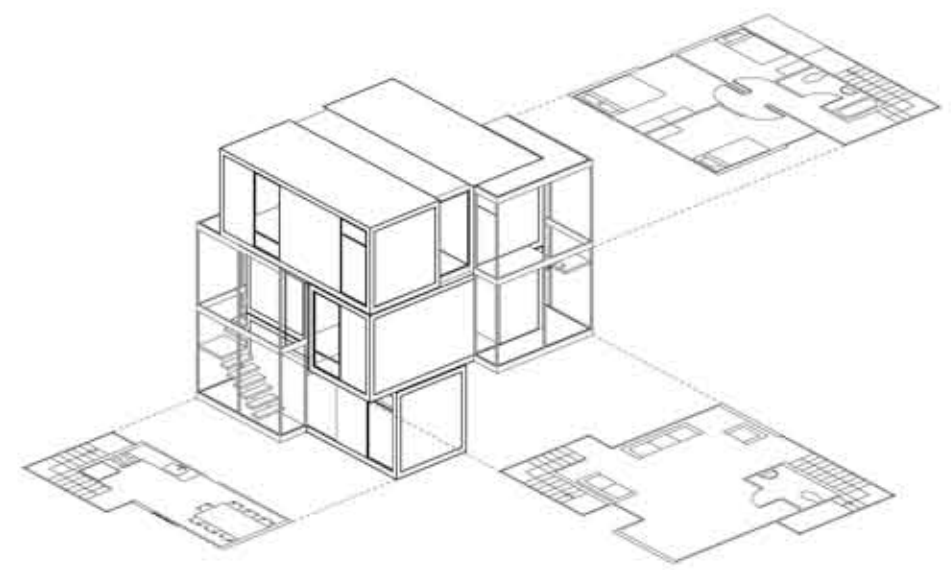
Site-
Inner Portland Infill
Site

- 8 total units-
8,740 sf
- Unit 1- 1130 sf
- Unit 2- 1055 sf
- Unit 3- 1055 sf
- Unit 4- 1130 sf
- Unit 5- 1130 sf
- Unit 6- 1055 sf
- Unit 7- 1055 sf
- Unit 8- 1130 sf

Lot coverage-
4160 sf = 41.6%
covered



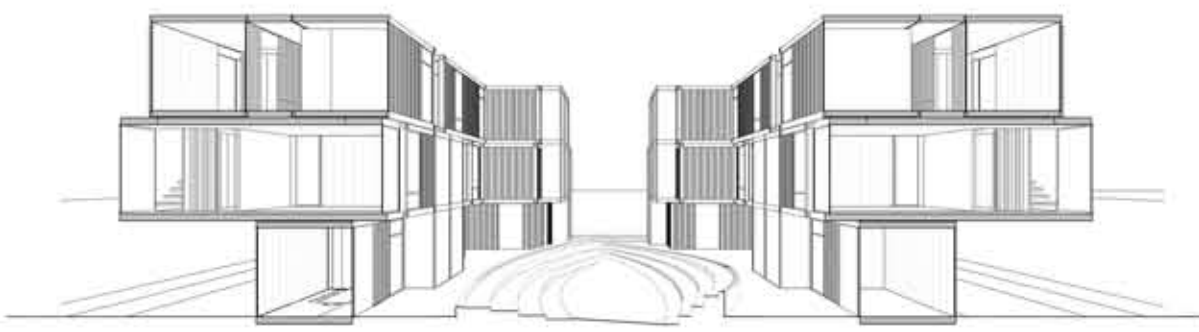
exploded massing axon



exploded plan axon



neighborhood context



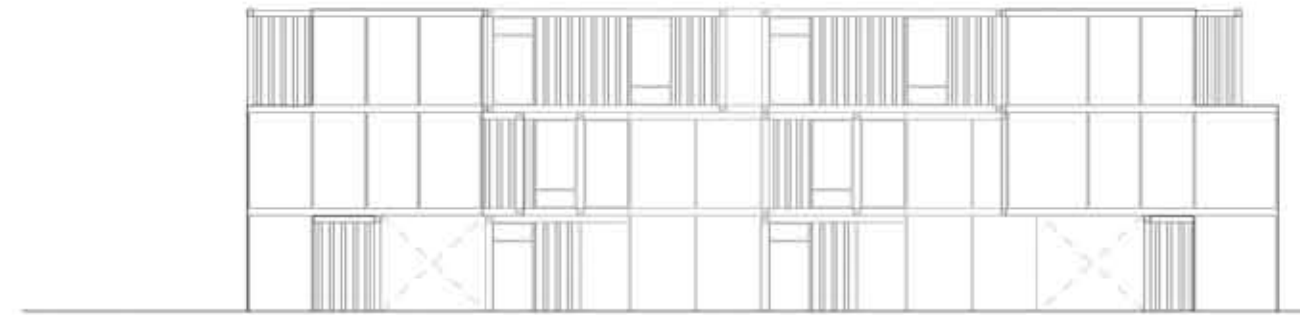
transverse section



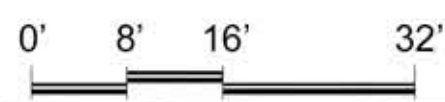
longitudinal section



street elevation



courtyard elevation



ground plan

