

**POROSITY**

Individual units are organized into a series of stacked blocks. The resulting negative space creates a visual connection between the courtyard, street and neighboring houses.

**OUTDOOR SPACE**

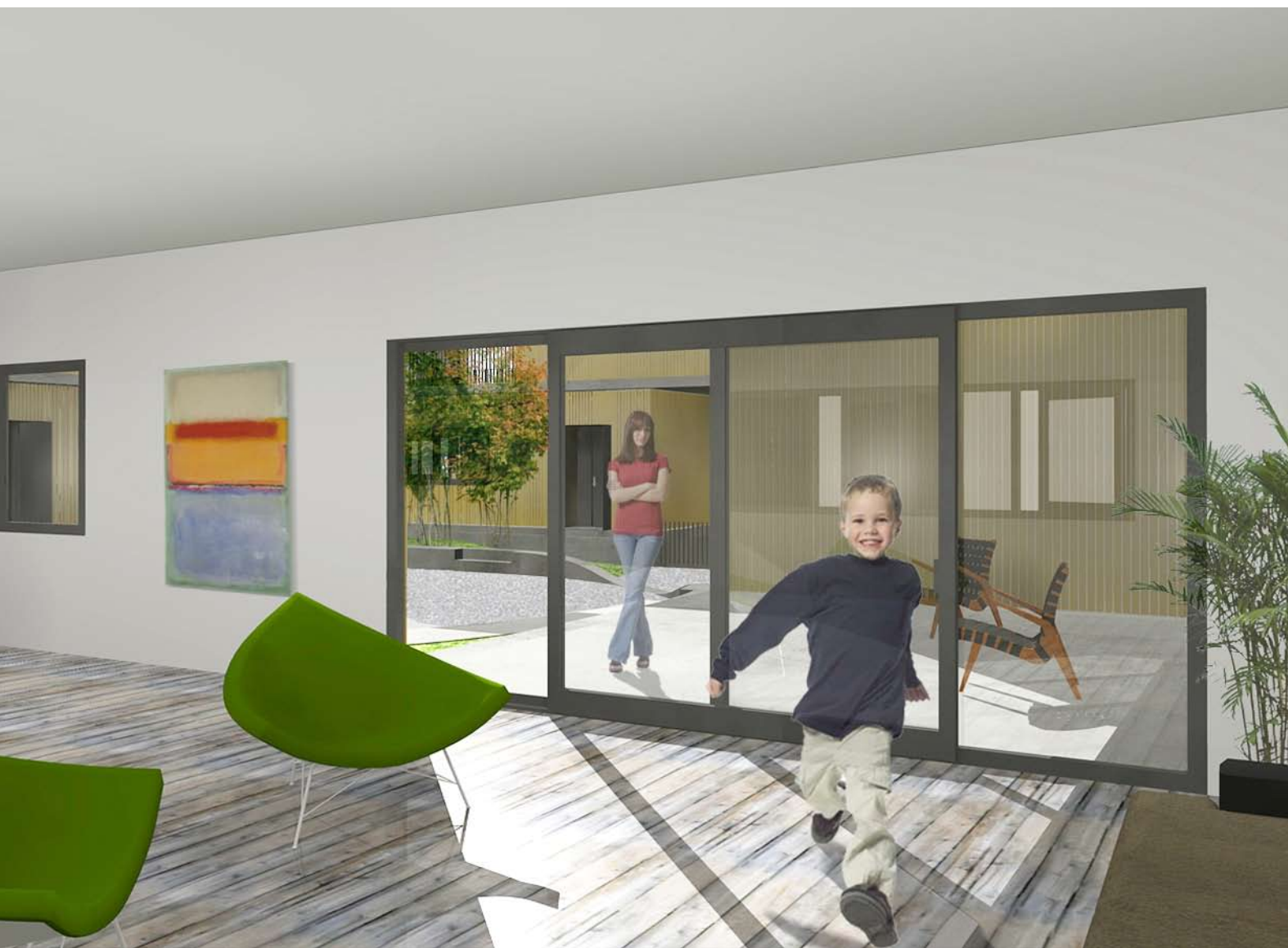
The private outdoor spaces are removed from the courtyard, providing privacy while allowing visual connection. These outdoor "rooms" are protected from the elements and usable year round.

**INTERLOCKING UNITS**

Each unit interlocks sectionally and is able to front the courtyard on three sides, which provides a diversity of external views and helps heighten ones perception of spaciousness and privacy.

**NECKLACE**

This project treats storm water as an asset rather than a waste material to be managed. The roof and courtyard landscaping collect and funnel storm water through the "necklace" to sub grade cisterns, where it is stored for future irrigation and gray water.



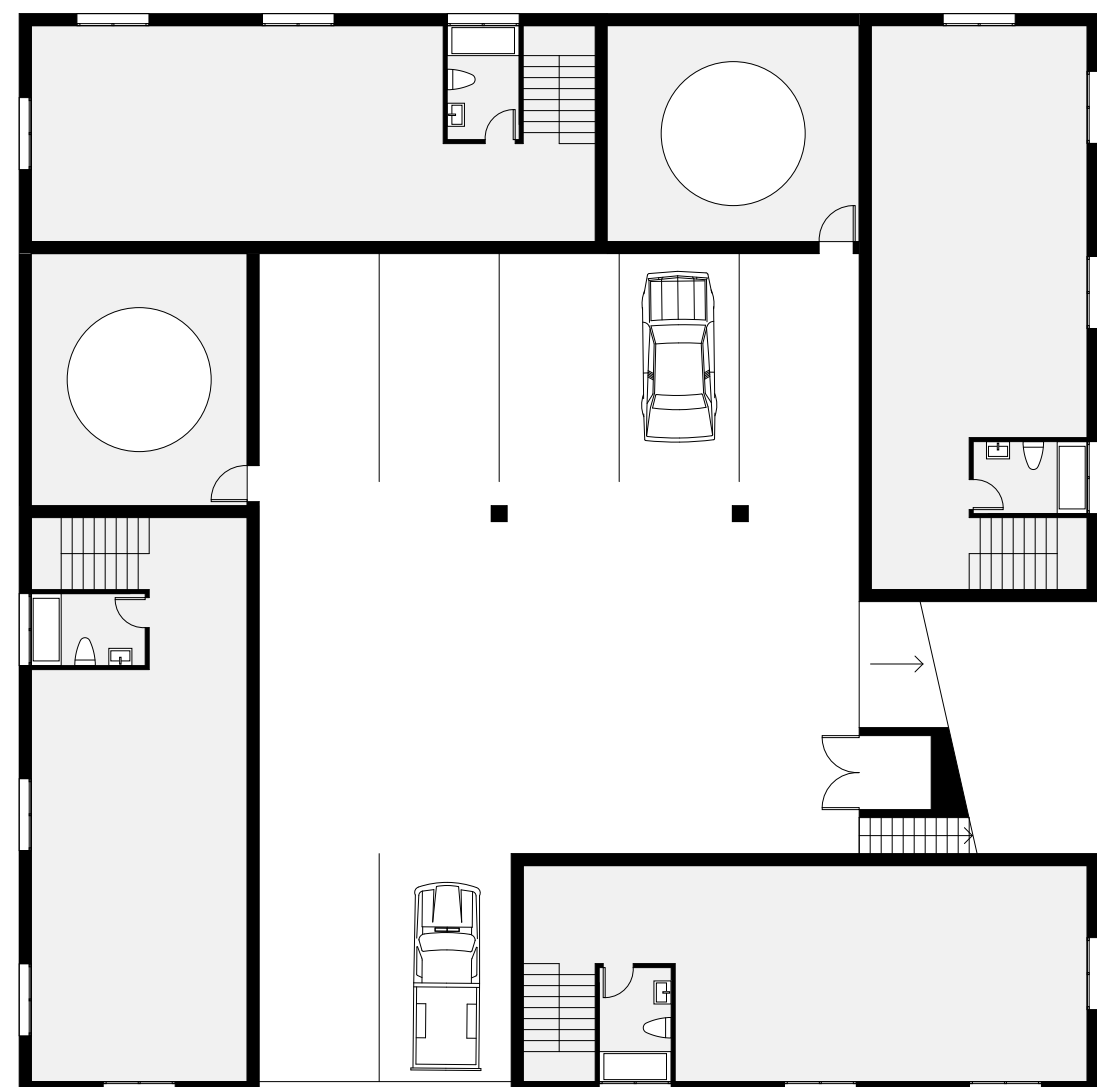
VIEW THROUGH LIVING SPACE



VIEW FROM UPPER TERRACE



SECOND LEVEL PLAN



ACCESSORY UNIT AND PARKING LEVEL PLAN

