

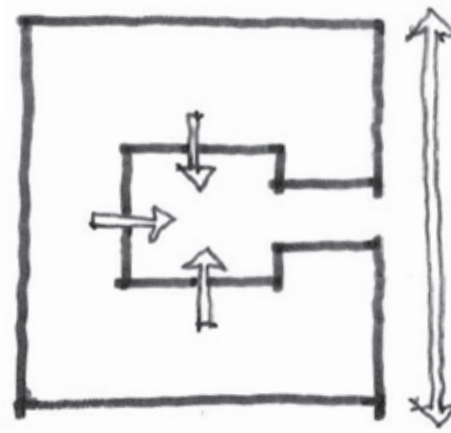
## Family Matters: a Good Neighbor for Inner Portland

This condominium proposal seeks to maximize the utility of shared exterior spaces and connect with and play a positive role in the neighborhood at large. Organized around four primary shared spaces, the project provides a place for all ages - from toddlers to teens and parents as well. Quiet and controlled, **The Backyard** is a shared garden space. Primarily hardscape, **The Court** provides a central social space with a variety of uses. Facing the street, the **Family Room** is perfect for meetings, shooting pool or watching the game. It could also be leased out to the neighborhood for community events. **The Stoop**, like the steps of a brownstone or front porch of a single family home, provides a place to hang out and watch the world go by.

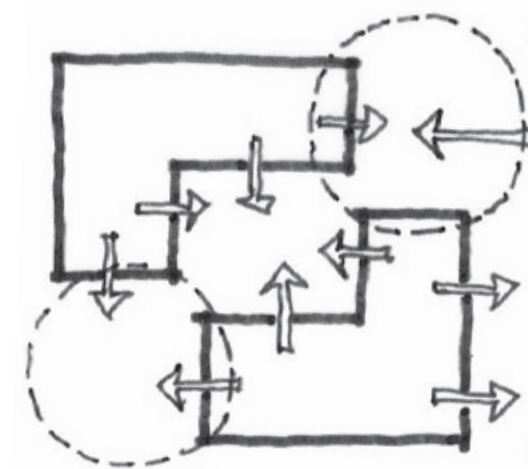
**Project Areas:**  
 Parking - 3540 s.f.  
 Common Space - 1,035 s.f.  
 Residential Interior - 10,396 s.f.  
 Residential Exterior - 905 s.f.

Unit	Interior	Exterior	#Bdrm
1A	1585	56	3
1B	1856	51	3
1C	1475	100	2
1D	1190	86	3
2A	1345	113	3
2B	1164	102	2
2C	704	114	1
3A	1180	177	3

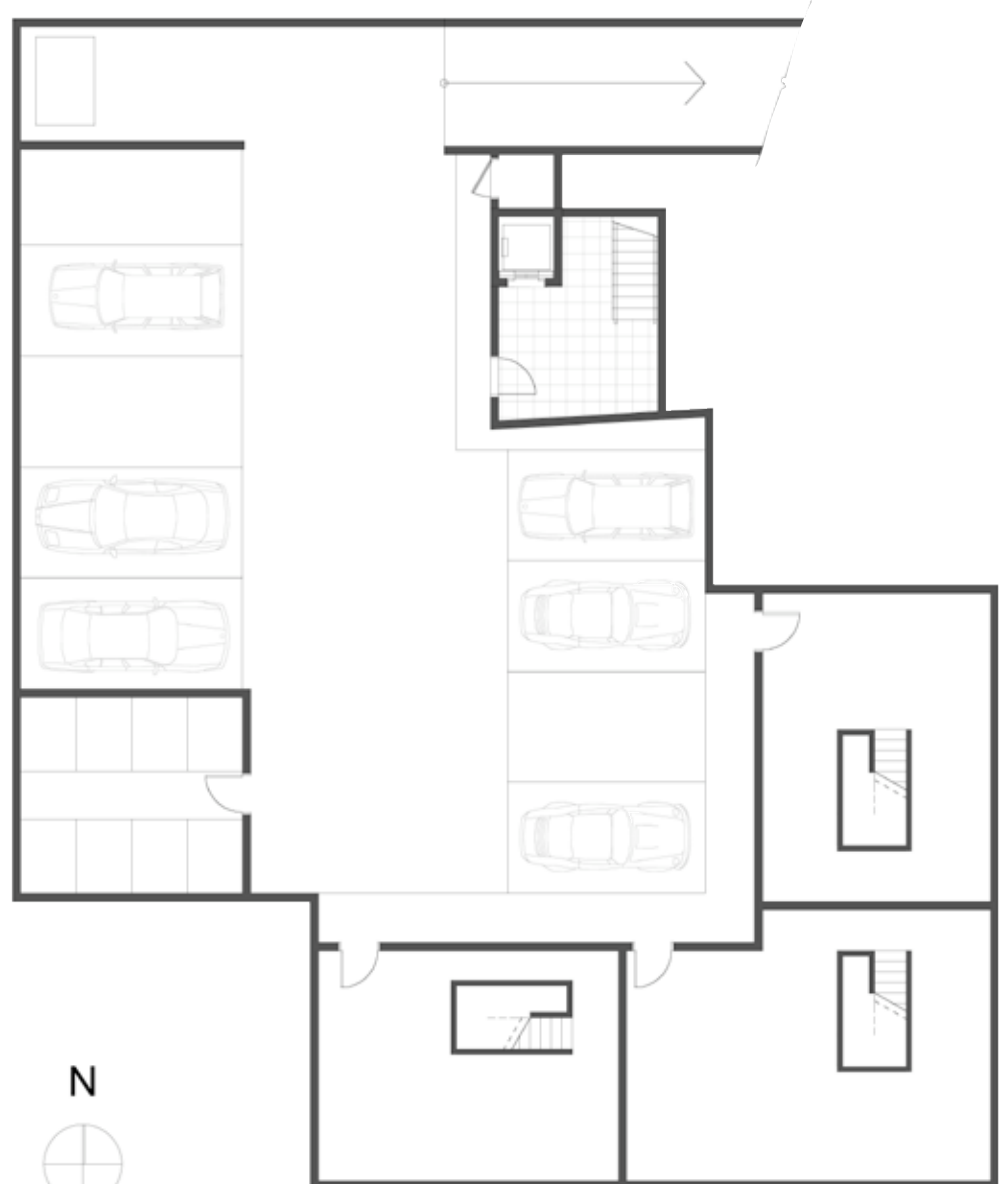
Building Footprint = 5,951 s.f. = 59.5% lot coverage  
 Total number of Units = 8; Maximum height = 45'



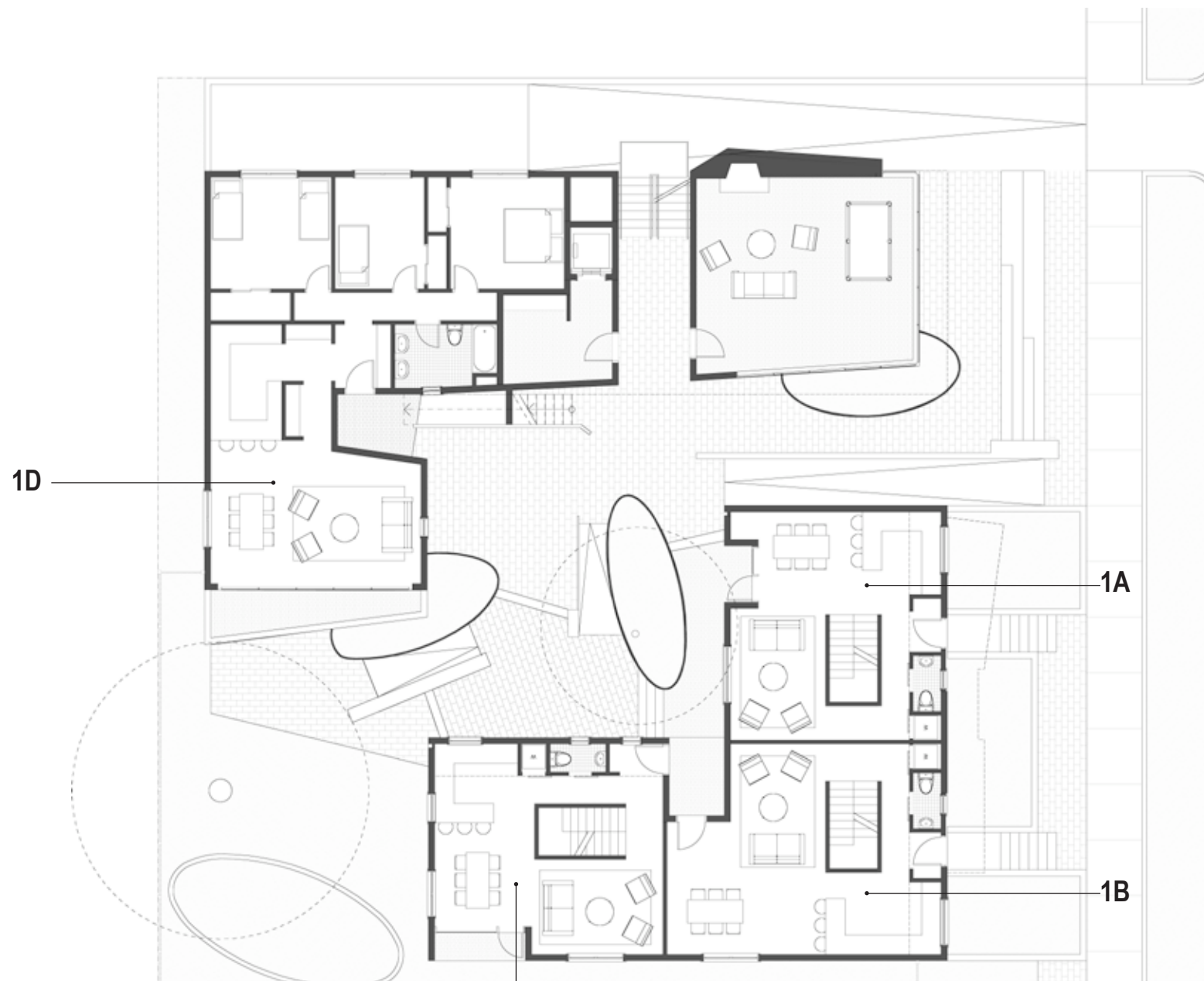
The typical Portland courtyard solution is inward focused and disengaged from the street.



View from street



Parking Plan



First Floor Plan

