

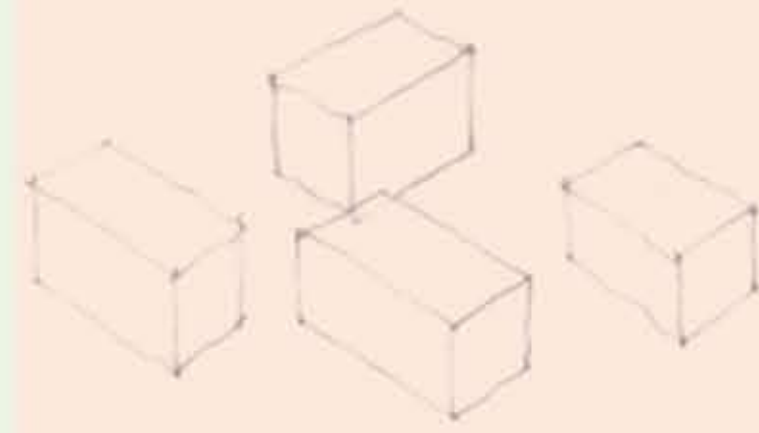
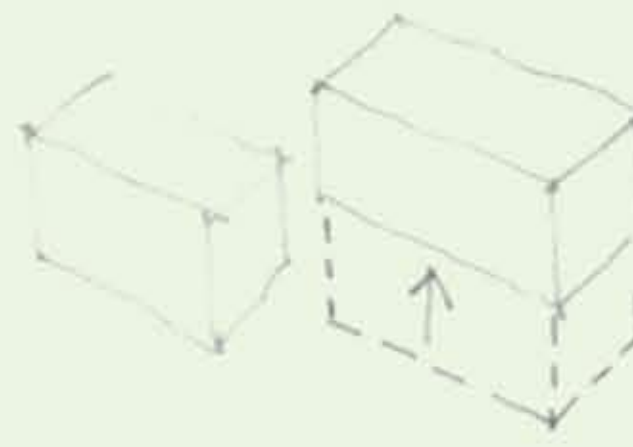
Flexible Blocks

Inner Portland Infill Site

In all the images that were included in the competition brief showing examples of courtyard housing, children can be seen playing in the foreground. This entry takes up the cause of children as a point of departure for not only accommodating children, but also for inspiring a process by which to solve the other two requirements posed by the competition; those of affordability and sustainability. Here the design concept takes clues from the way children play and how in doing so hierarchy dissolves in lieu of a process in which decisions are addressed one step at a time and not in relation to an overriding logic. In designing a response to the competition, this entry began with a basic module, essentially of a 20' X 30' footprint, and from their manipulated this module one step at a time, responding to one spatial and programmatic need at a time. In this type of flexibility this entry believes that there occurs a natural complementary effect towards cost and environment.

Data: Units A-E: 1200 sq. ft Units F,G: 1440 sq. ft. Total: 8880 sq. ft Coverage: 30%

parking



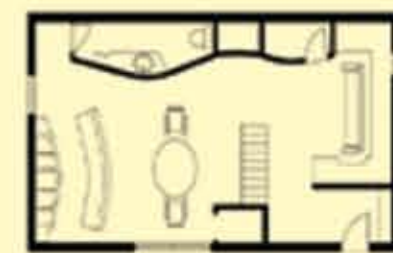
filling out the site



Site Section: 4 8 16'

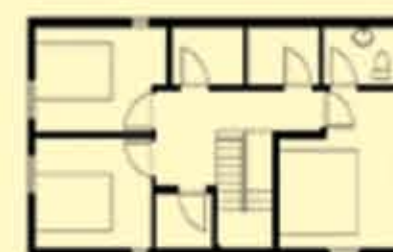


Ground Floor Plan: 4 8 16'



Ground Floor 4 8 16'

Units B,C,D,E
Total Sq. Ft.: 1200



Second Floor 4 8 16'