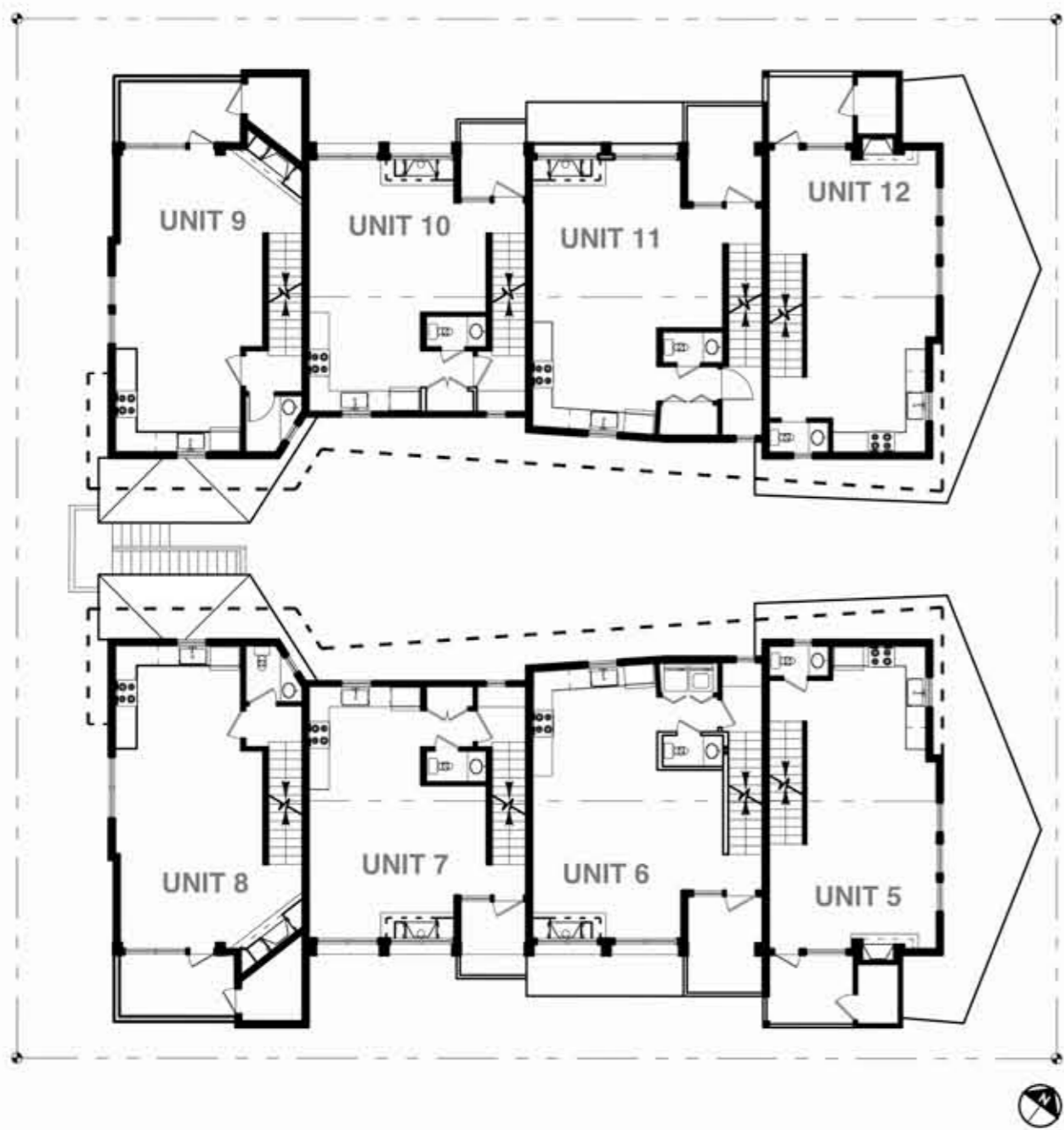


1/8" = 1'-0"



THIRD FLOOR plan

1/16" = 1'-0"



FOURTH FLOOR plan

1/16" = 1'-0"

unit #	sq.ft.
1	1029
2	1079
3	1079
4	1029
5	1193
6	1207
7	1285
8	1468
9	1468
10	1285
11	1207
12	1193
total	15,837