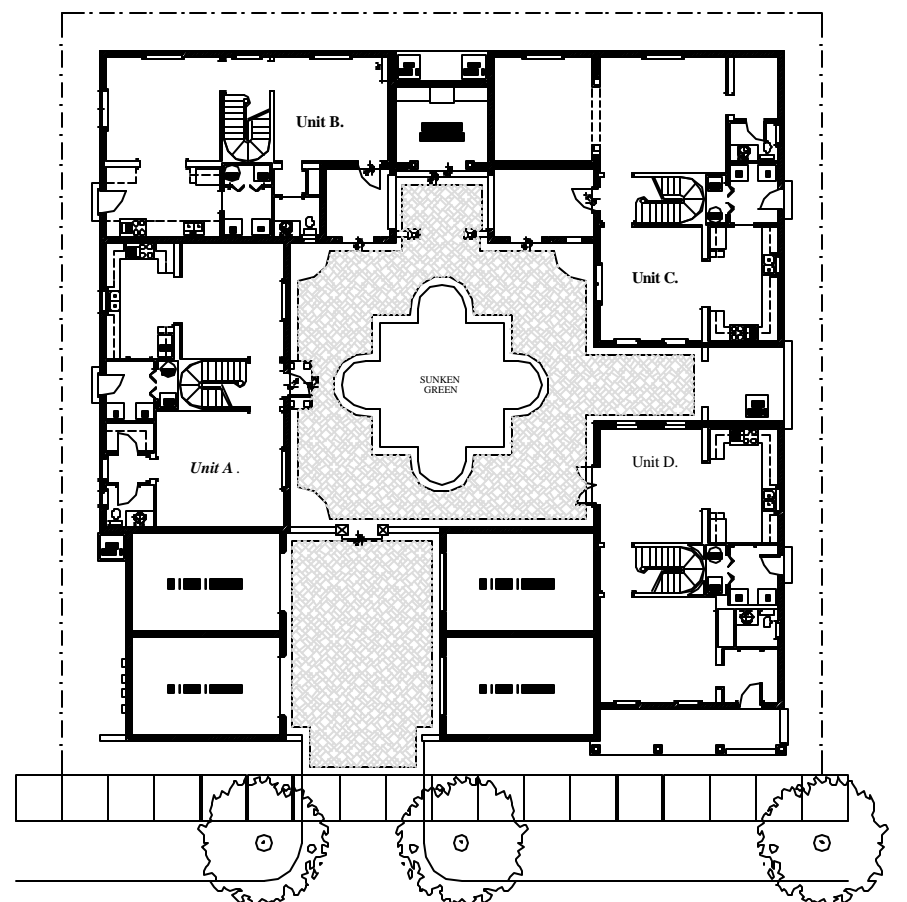
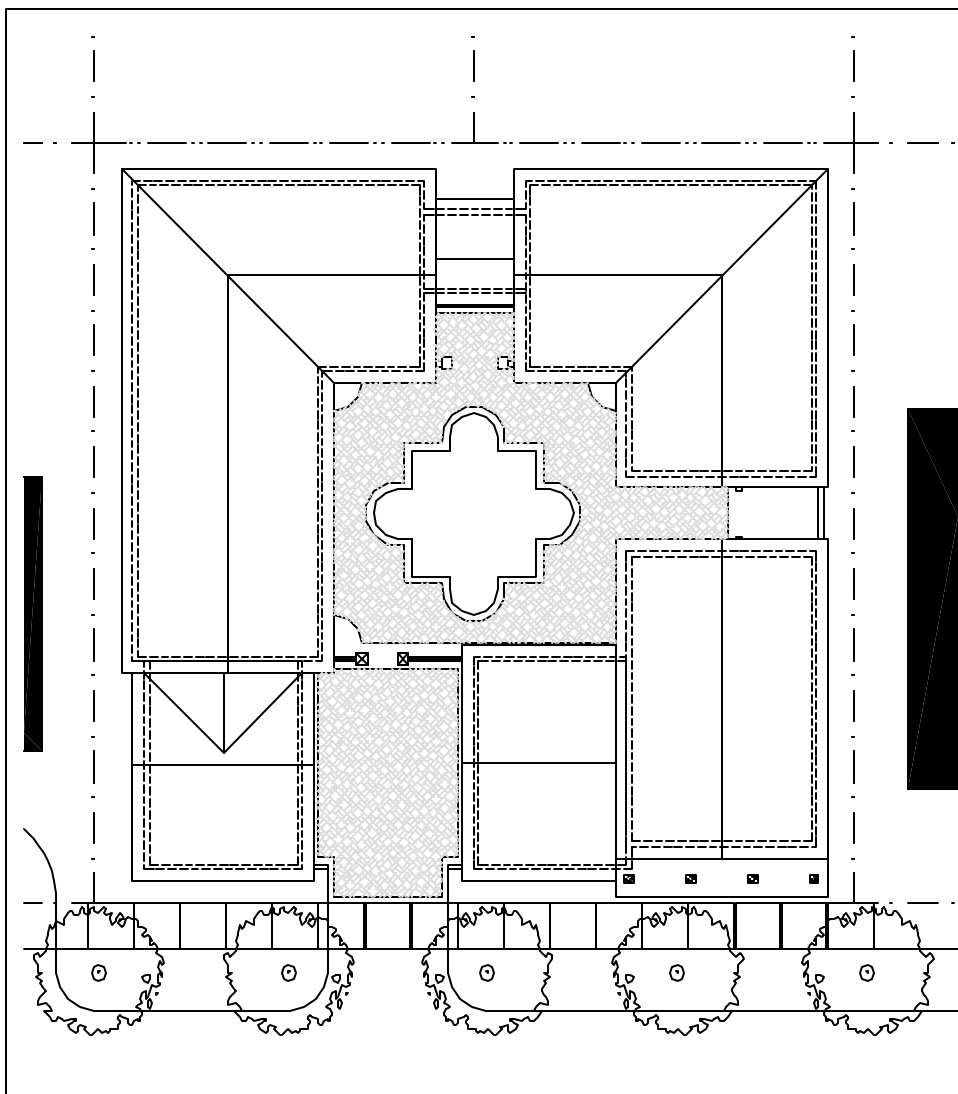
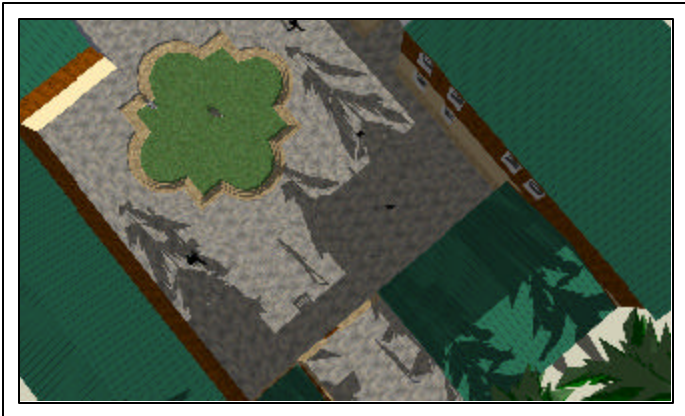
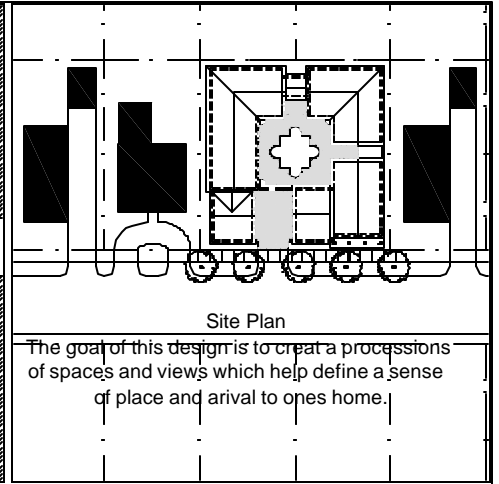
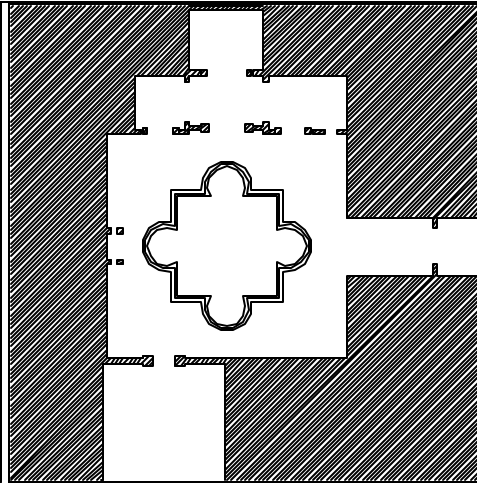


Category: **Inner Portland Infill Site**

Title: **Four Rose Court**

Narrative: **To design a courtyard lot based on principles of hidden geometries and classical proportions to create pleasurable spaces. Building materials specifically stone and lumber, as well as using local trees, such as pine or cedar, will be acquired locally to increase the idea of affordability as well as sustainability.**

Data: **Unit A & D: 1424 sqft, Unit B: 1274 sqft, Unit C: 1886 sqft. 2 garages with 1 parking space per unit. Building Heights are 19'-6" to the eaves. Lot coverage: 79 %**



1078212336-go