

# earth

inner portland infill site  
total building sq.ft. 8,500  
unit count. 6  
maximum height. 33.5 ft  
building coverage. 55%

# box

Adults entering the courtyard of EARTHBOX are enveloped by the calm and beauty of the land their homes surround and preserve. Children have free reign for their games on the mound of earth. Guests are invited to rise to the top of the building to share the reclaimed space. Simple, affordable homes become more than the sum of units by the addition of their shared spaces.

- A The driveway is pushed to the perimeter. Cars park on the border of the yard, without disturbing its pedestrian environment.
- B When the parking is not used, homes gain an additional covered space contiguous to their studios and the shared courtyard.
- C A web of walkways, connected to the outside circulation, allows pedestrians and bicycles to cross and reach any part of the complex.
- D The leasable space at ground level, adjacent to the front road, can serve as an added income to support the management of the complex.
- E Homes gravitate around the central spine of stairs. Where the circulation occurs, the light is intensified and the transparency to the surrounding is total. The illumination decreases toward the back ends of the space, where the service rooms are located.
- F Living areas and kitchens are raised to the floor adjacent to the roof to allow for a direct relationship with the outdoor roof spaces.



section; collection and reuse of rainwater

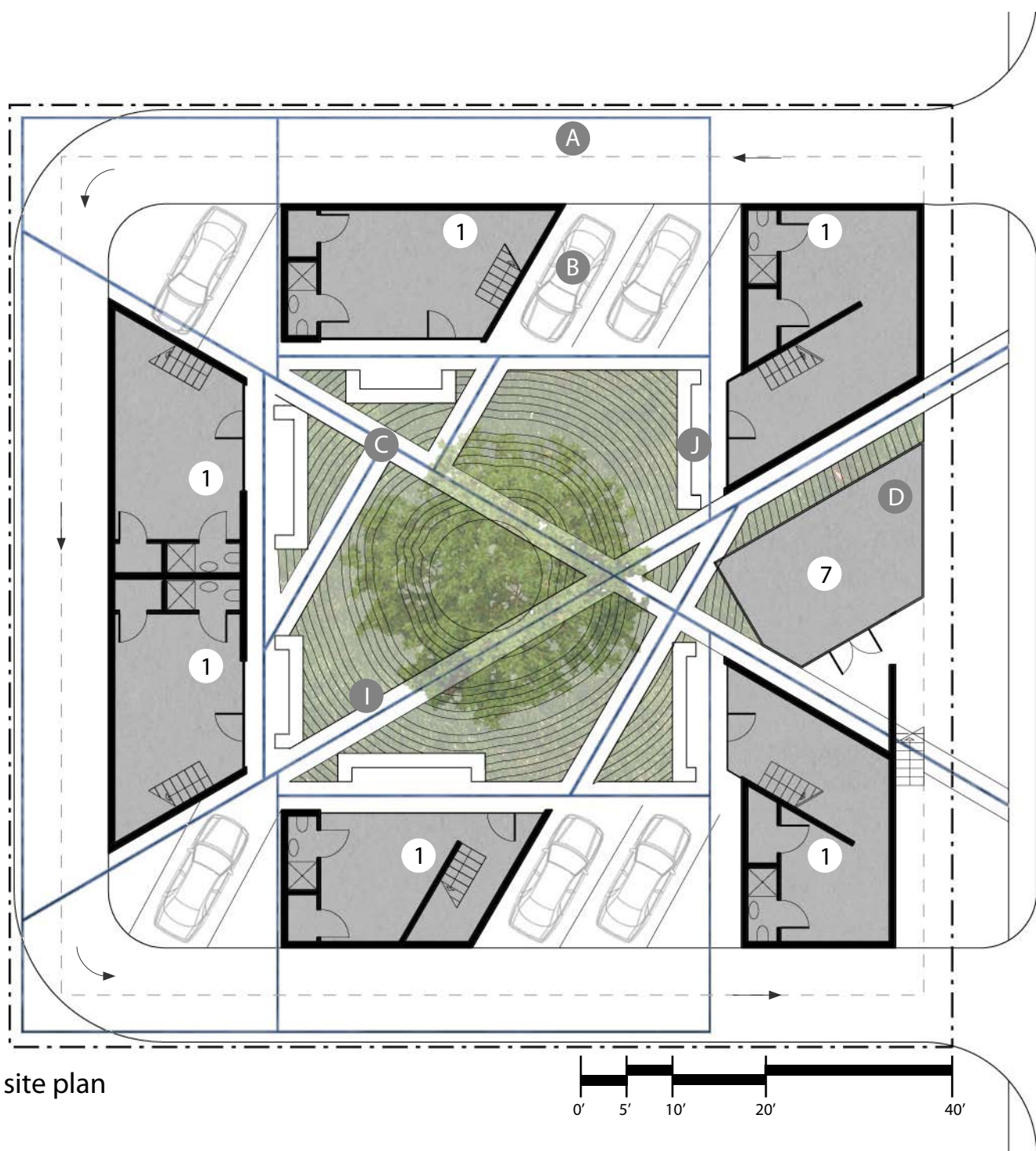
## spaces

- 1 studio
- 2 bedroom
- 3 living room
- 4 kitchen
- 5 roof patio
- 6 cultivated roof
- 7 leasing space

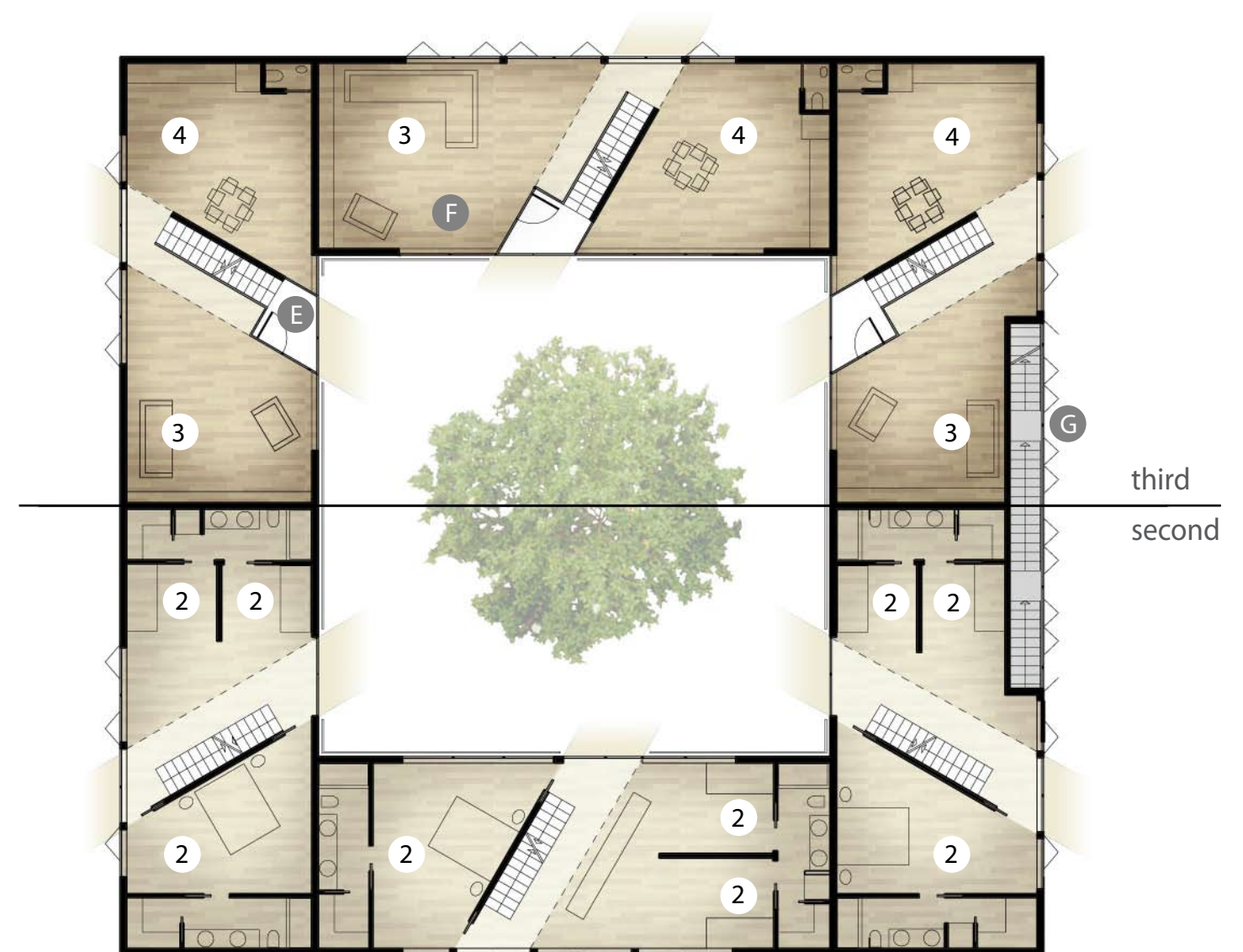
## units

- two units 1,400 sq. ft.
- two units 1,274 sq. ft.
- one unit 1,404 sq. ft.
- one unit 1,433 sq. ft.

- G A communal stair reaches the roof, allowing visitors to choose an alternate entrance to the homes.
- H The roof is cultivated with vegetables by the residents or hired professionals. Seasonal produce is available to an extended community.
- I Rain water infiltrates through the earth mound or drains along its pathways, forming streams for visual enjoyment even on bad weather days.
- J The volume of the earth mound, the tree in the center, and a system of wood screening controls the privacy.
- K Compact volumes, simple materials and standardized solutions guarantee affordability.



site plan



second/third floor plan