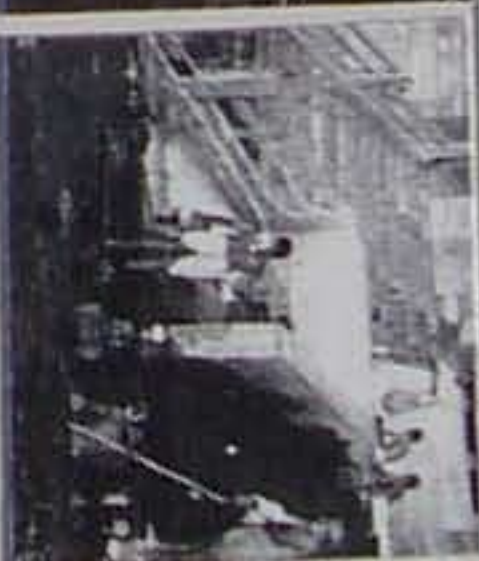
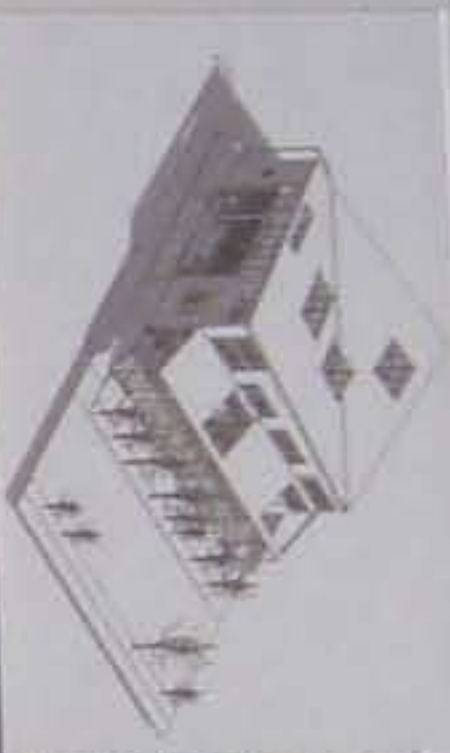


INNER PORTLAND INFILL SITE (public) PORCH & (private) COURTYARDS

Lou Kahn asked the brick, "what do you want to be?" ("an arch")
I asked "Portland COURTYARD, what do you want to be?" ("a front PORCH")

- Unit 1 - (3 bedrooms/2 1/2 baths): 2,883 sq ft (+ courtyards 358 sq ft)
 - Unit 2 - (4 bedrooms/2 1/2 baths): 2,489 sq ft (+ courtyards 376 sq ft) w/ workspace
 - Unit 3 - (2 bedrooms/2 1/2 baths): 2,588 sq ft (+ courtyards 391 sq ft) w/ workspace
 - Unit 4 - (3 bedrooms/2 1/2 baths): 2,588 sq ft (+ courtyards 521 sq ft)
- total number of units: 4, of 10,548 sq ft total (+ courtyards 1,646 total sq ft)
partially-covered front porch: 1,548 sq ft
80% site coverage

maximum building height: 40 ft (at highest point)
total number of parking spaces: 8 (9 1/2 ft x 19 ft each) [2 assigned spaces/unit]
each unit has unheated storage room of 171 sq ft
ownership option: condominiums



There's wisdom in the vernacular — courtyards are appropriate more for arid and Mediterranean climates; Portland's rainy and not-so-sunny climate precludes its use as the appropriate public socio-spatial type. PORCHES, however, offer the community a more appropriate socio-spatial place, an unexpectedly generous "public room" for both residents and neighbors to gather for the multiple rhythms of public/social life. Smaller private COURTYARDS, "cut" into the fabric of the residential building mass, allows light-and-air-and-greenery to penetrate into the place for sacred private/family life.

- 2 key design precedents:
- Kimbell Art Museum in Fort Worth, Texas (Louis Kahn)
 - "beginning", singular, welcoming, place-to-start, public PORCH vs. "ending", multiple, resting, place-to-be, private COURTS
 - stairs down to the River Ganges in Varanasi, India (vernacular)
 - gesture-of-connection, with the streetside/walk understood as a holy stream of neighbors, of neighborliness, of community
 - simple formal order of the big gesture — the stairs themselves — vs. set of social activity-nodes

