

# Family Home

For Real People. For Generations.

Inner Portland Infill Site  
 Total Units: 4  
 Total Square Footage: 7317 sq.ft.  
 (two floors)  
 Building Coverage: 40%  
 Maximum Height: 33 ft.

To be of lasting value to a family, a home must provide for all their needs while at the same time having the ability to change with them. Rather than an apartment building, these are four *homes*, varying in shape and size, unique and distinct from each other, built to be customized by their owners. Simultaneously, the homes are strongly connected by sharing a versatile courtyard which includes a private side street, open green space, a three-bin composting system (attached to Home 3), and storm water planters which handle runoff from the roofs.

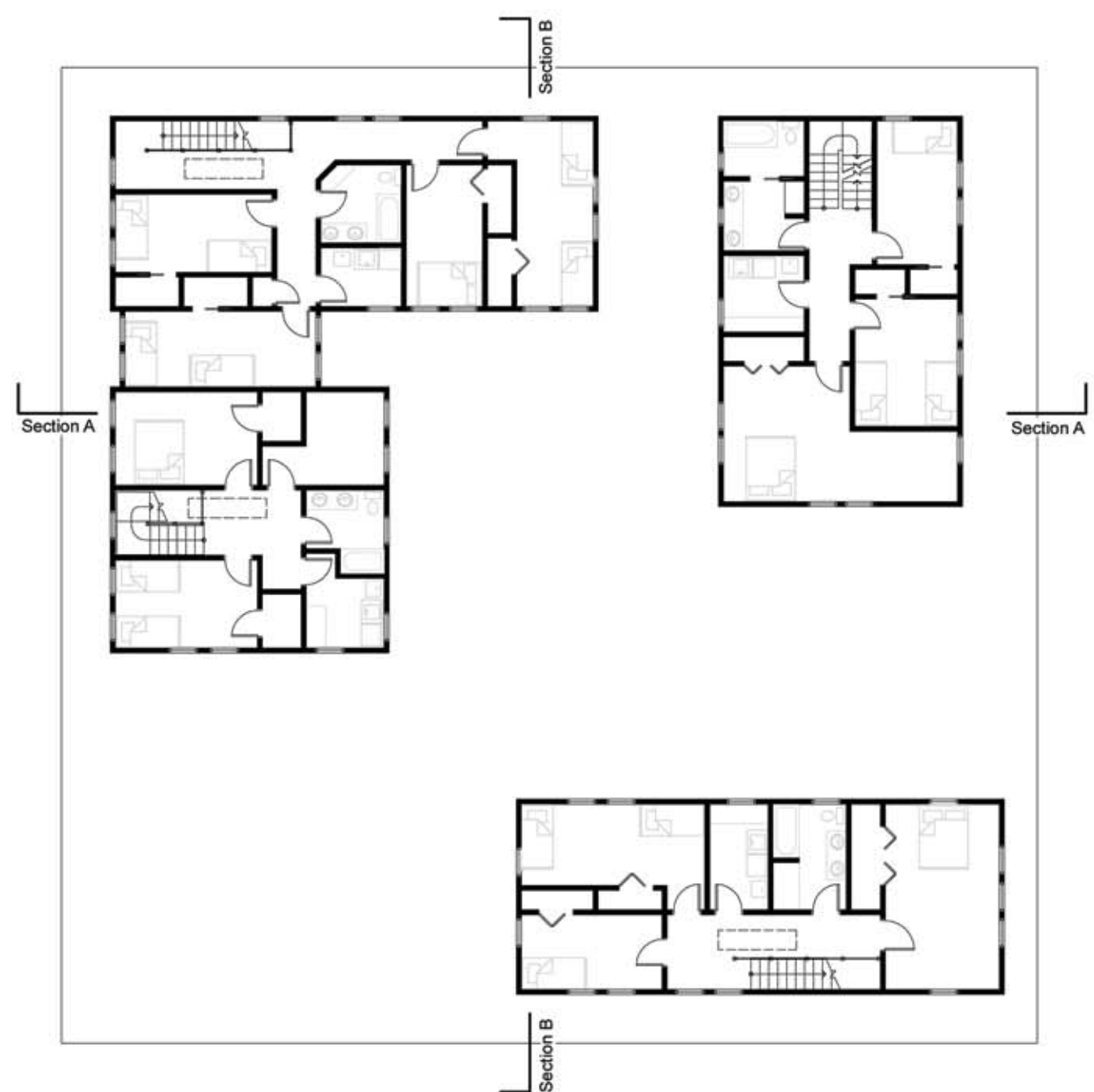
The ease with which they can be customized and the potential they give to expand into unfinished attic and basement space ensure that these homes will stand the test of time.

Each of the homes boasts many family amenities:

- First floor storage
- Bedroom closets
- Mud room
- 2 sinks in upper bath
- Unfinished basement
- Kitchen and laundry room with view of courtyard



Partial Plan of Home 3



First Floor 1/16" = 1'-0"

Individual Lots noted by Dashed Line

Second Floor 1/16" = 1'-0"

All Bedrooms 120 sq.ft. or Larger

