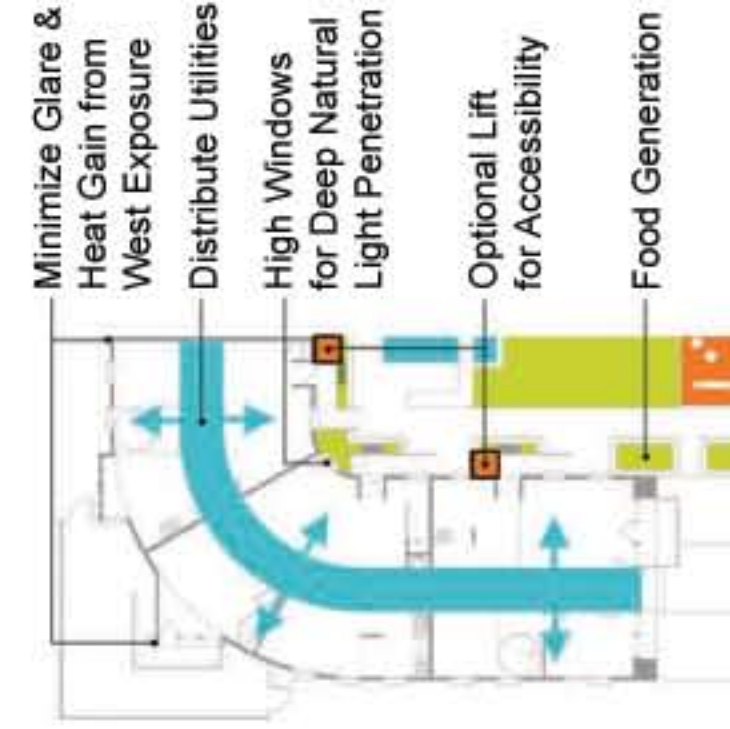
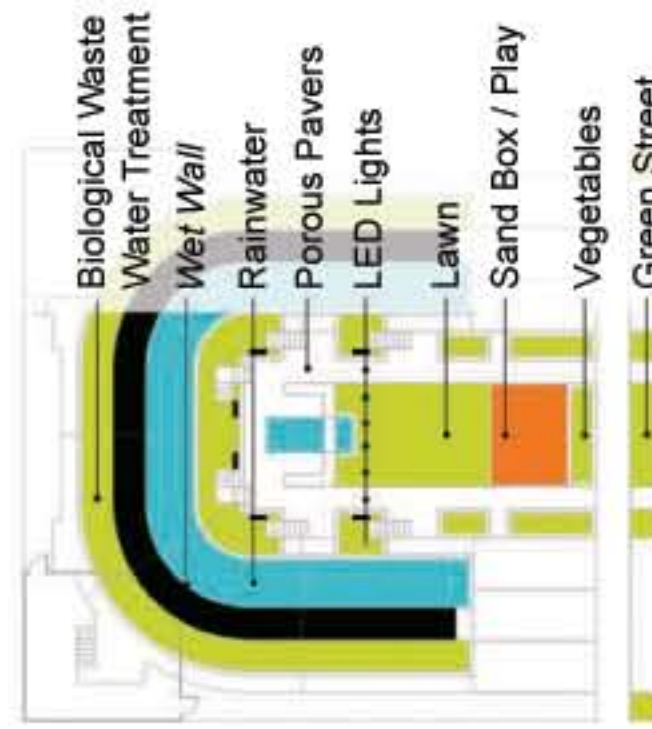
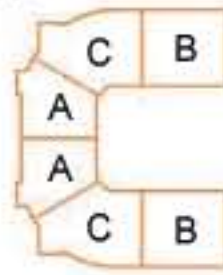


Derived from the u-shaped parti of traditional courtyard housing in portland, H2ome minimizes the building footprint while maximizing surface area for rainwater collection. The concept consists of a *wet-wall* datum made of native stone supporting a rounded aluminum panel *skin*. The parti creates a partially enclosed communal courtyard with porous surfaces eliminating stormwater runoff through infiltration. The semi-public courtyard space is defined by vegetable garden planters and balances child oriented space with general recreational space. LED trellis lights allow activities to continue in the courtyard into the night and provide an added layer of safety and security for the residences.

H2ome consists of 6 affordable townhomes accommodating the spacial requirements of diverse families, ranging from 2 bedrooms with 1.5 baths, to 4 bedrooms with 2.5 baths. Affordability is reached through an efficient use of space, energy and water utilities.

Total Area: 7450 SF  
 Lot Coverage: 4600 SF = 46%  
 Building Height: 30ft.

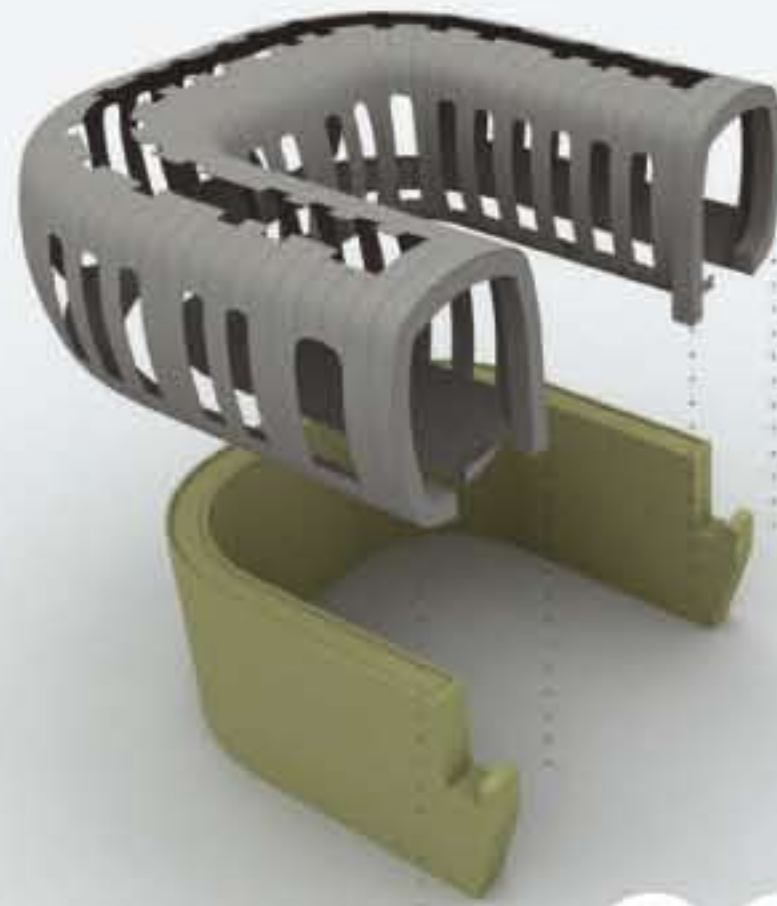
Unit A: 1020 SF  
 Unit B: 1290 SF  
 Unit C: 1413 SF



category: inner portland infill site

versatile courtyards

functional homes



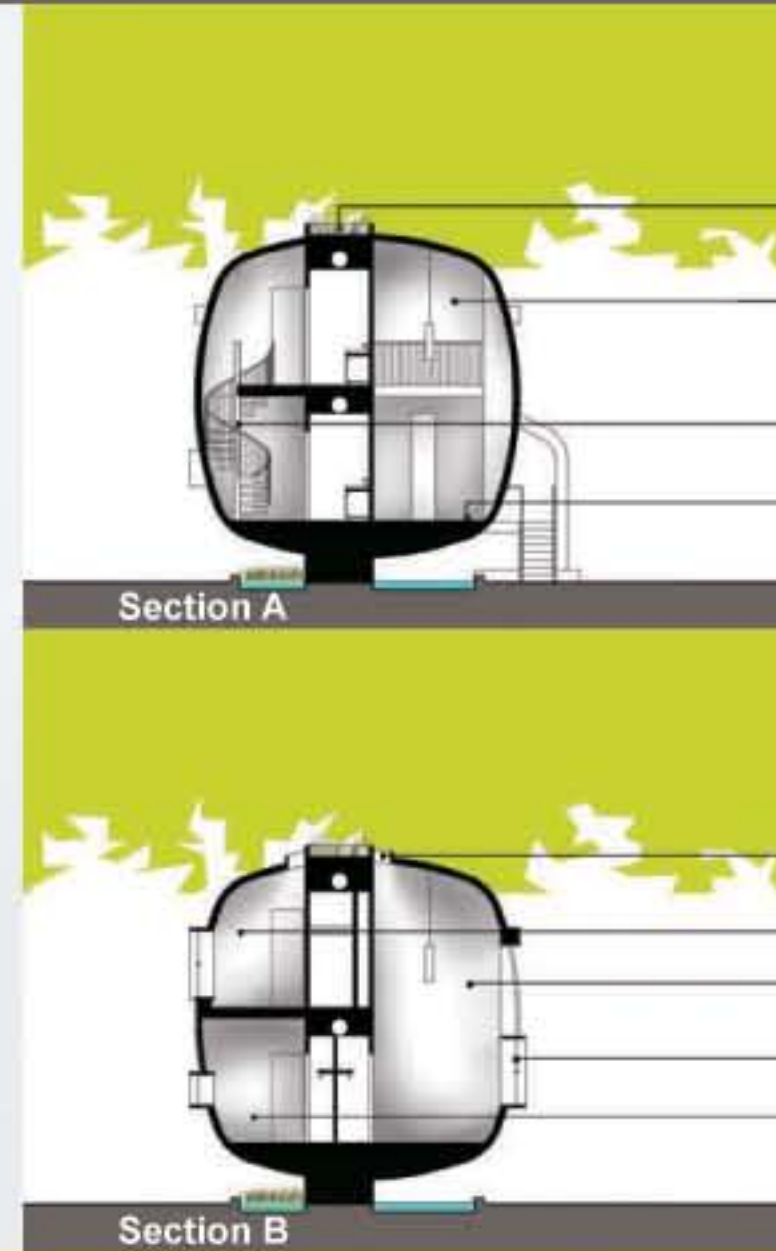
**skin:**

The building envelope is a rounded rectilinear aluminum panel tube with strategic penetrations that allow rainwater to flow freely from the roof to the structural base where it is collected.

**wet-wall:**

The wet-wall serves as the collection and distribution point for rainwater, potable water and other building utilities. In addition to being the structural support for the building the wet-wall sets the boundaries between the more public living space (overlooking the courtyard) and private sleeping spaces.

concept



**continuous envelope**

The form promotes rain water collection

Green roof reinforces wet-wall concept.

Loft functions as kids room or office.

Spiral stair - efficient use of space

Polished concrete floor stores passive and radiant heat

**daylight and ventilation**

Operable skylights and windows allow for deep daylight penetration and air flow.

Operable Skylight

Bedroom

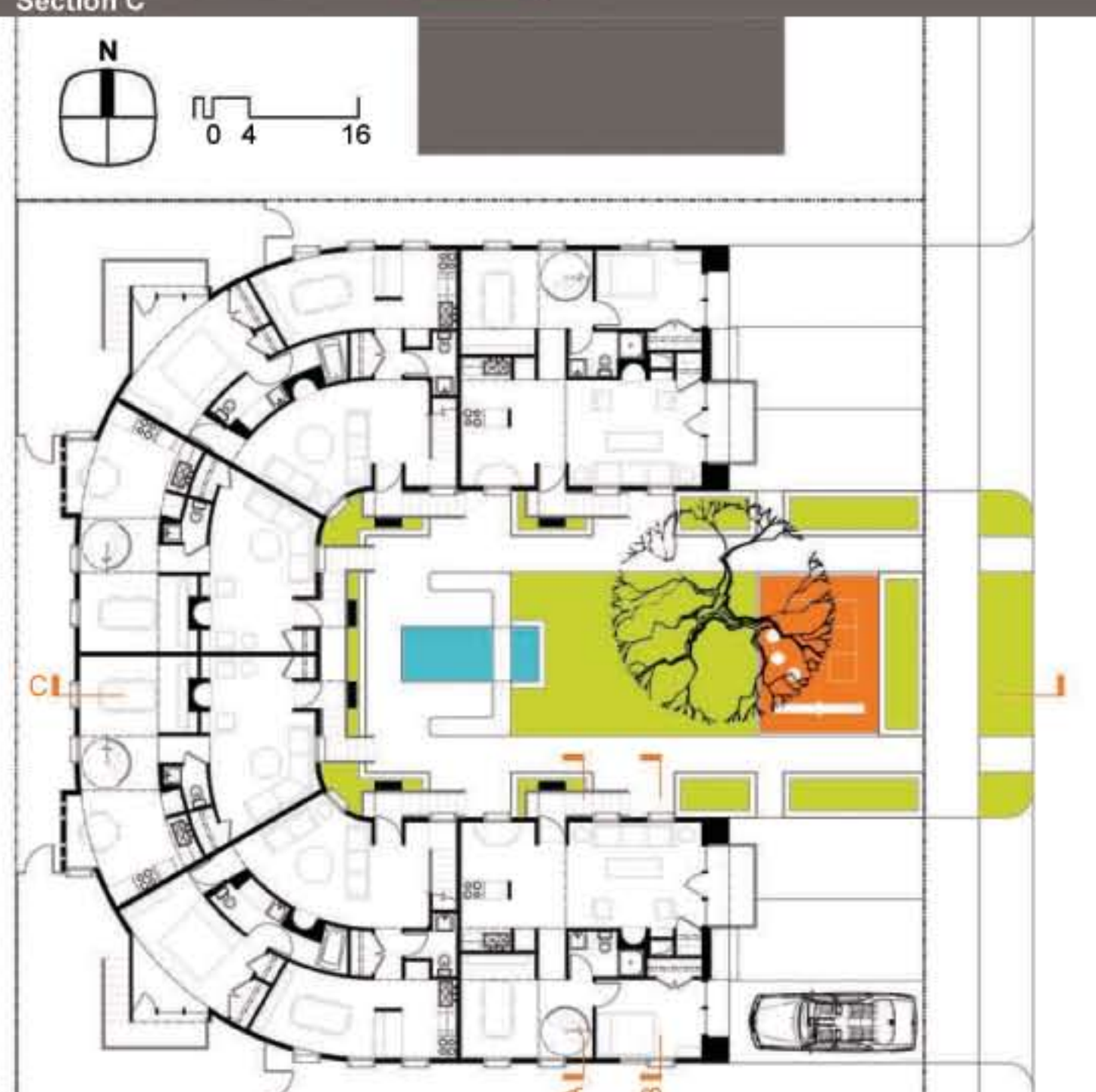
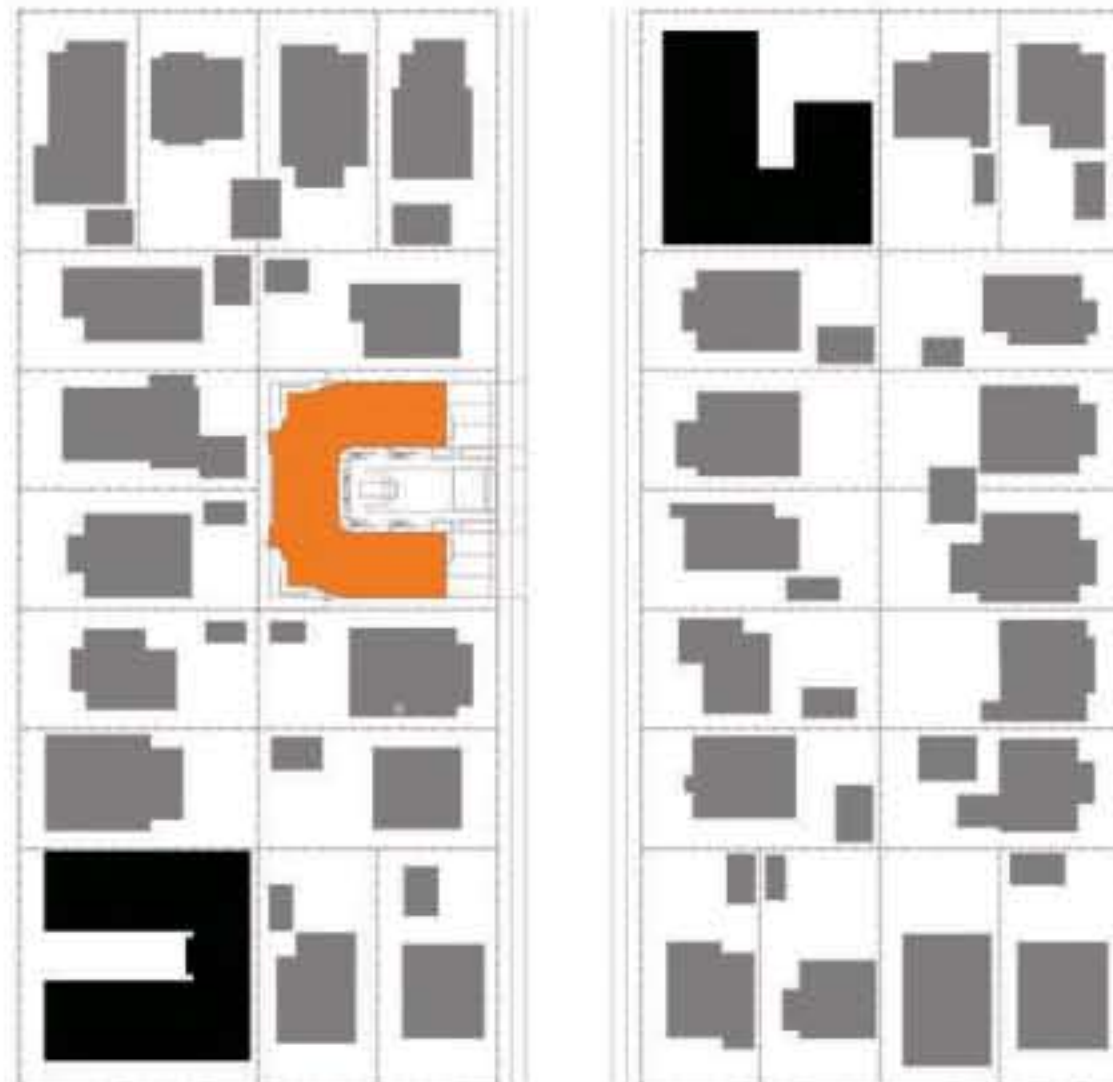
Living Room

Operable Window

Bedroom



The parti is derived from traditional courtyard houses in the neighborhood.



context

siteplan