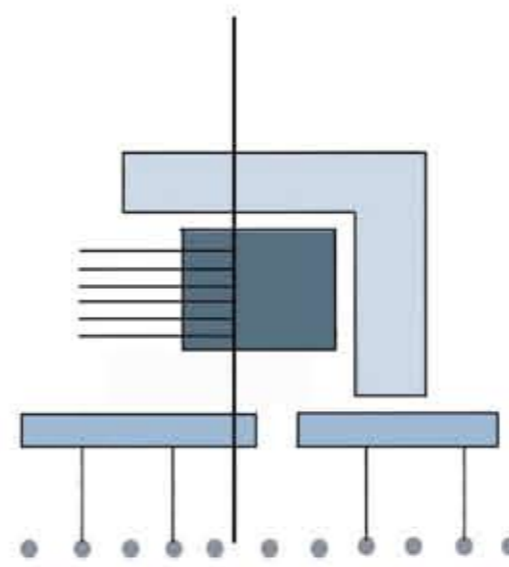


Cultivating Community through Sustainable Design

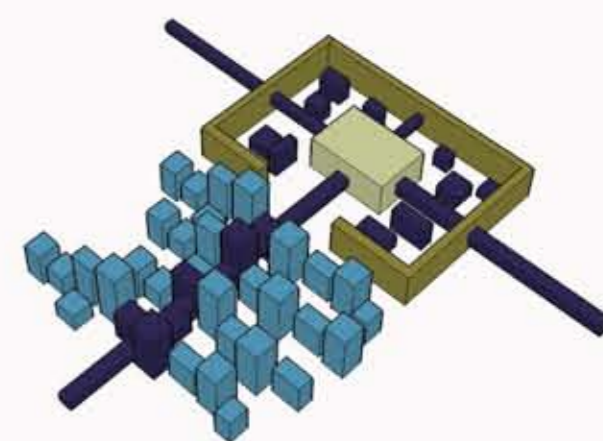
Social interaction is celebrated by the verdant inner landscape features which spill onto the street front. Circulation to each family's home creates a symbiotic relationship with the street and the courtyard. Proximity of the street-front entries address and activate the edge while acknowledging the contextual response. The passage to the remaining units will provide a constant life to the courtyard. The safe internalized area provides space for children to play while the developed landscape acts a retreat for the adults. Appropriate passive design concepts of building mass size, site location, materials selection, landscape design, and water usage, provide an affordable solution to Green housing. Orientation of the built elements provides opportunities for passive heating and cooling via ample lighting and ventilation. With the courtyard lit by the southwestern light, its integration allows the size of the units to be appropriately reduced by the gain of shared living space from the courtyard providing an overall reduction in building mass. Both the interior and exterior of the building finishes will use recycled and local materials that will also reduce construction waste. While the site can be used for the collection and re-circulation of rain water, the combination of appropriate xeriscaping and hardscaping helps to limit the amount of water consumption while providing a solution to storm water drainage.

Project Information:

6 units ranging from 3 Bedroom 2 bath to 3 Bedroom 2.5 Bath plus den
 Total Livable Space: 13,366 s.f.
 Ground Cover: 4,861 s.f. (48.61% of Site)
 Total Building Height: 44' above grade



Conceptual Parti



Creating Community within itself while maintaining connections with the existing community



Perspective from Southeast Corner



Model Aerial of Courtyard



Perspective Entering Courtyard



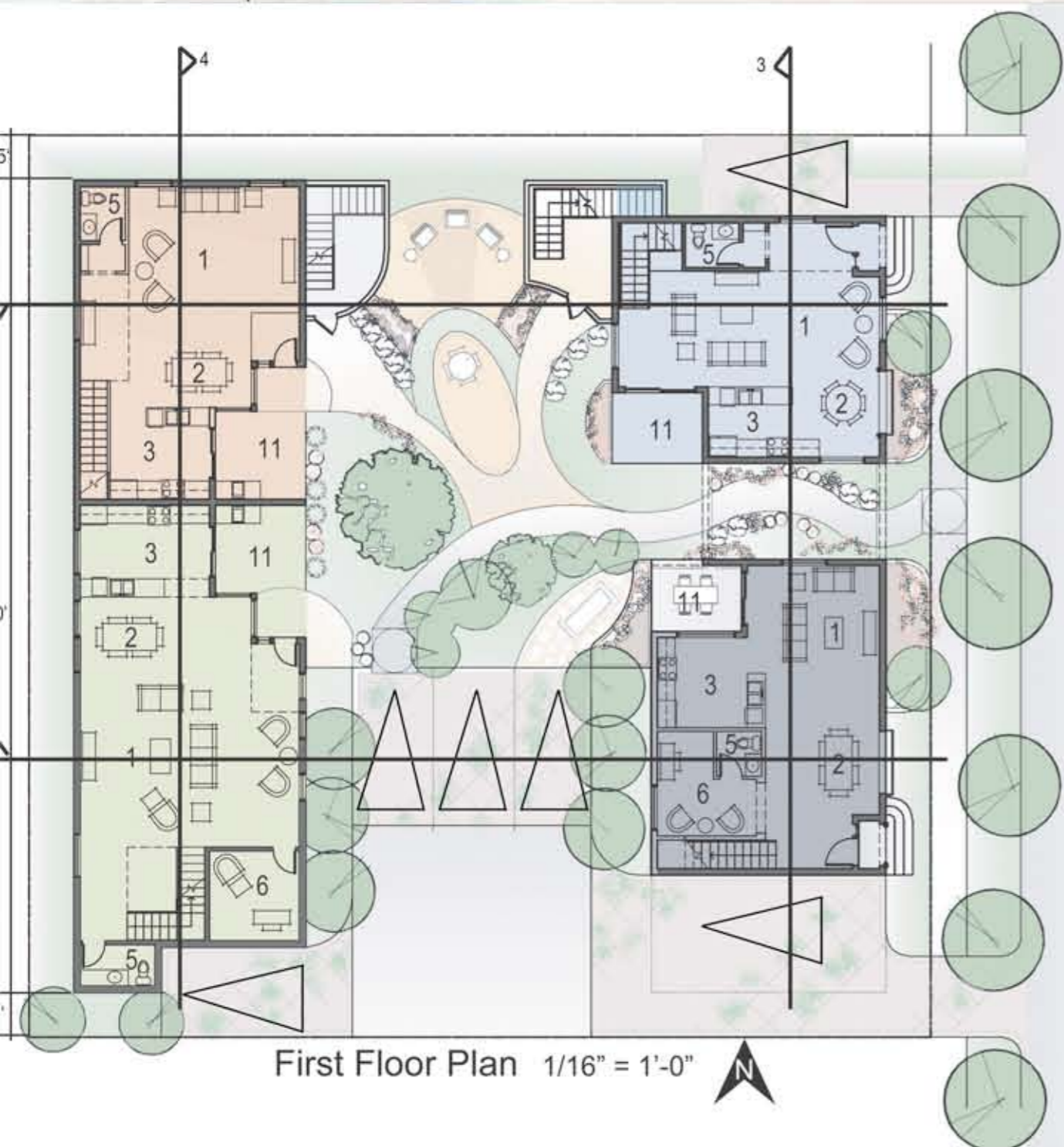
Section 1 1/16" = 1'-0"



Section Perspective 4 1/16" = 1'-0"



South Elevation 1/16" = 1'-0"



First Floor Plan 1/16" = 1'-0"



Second Floor Plan 1/16" = 1'-0"