

CATEGORY: INNER PORTLAND INFILL SITE

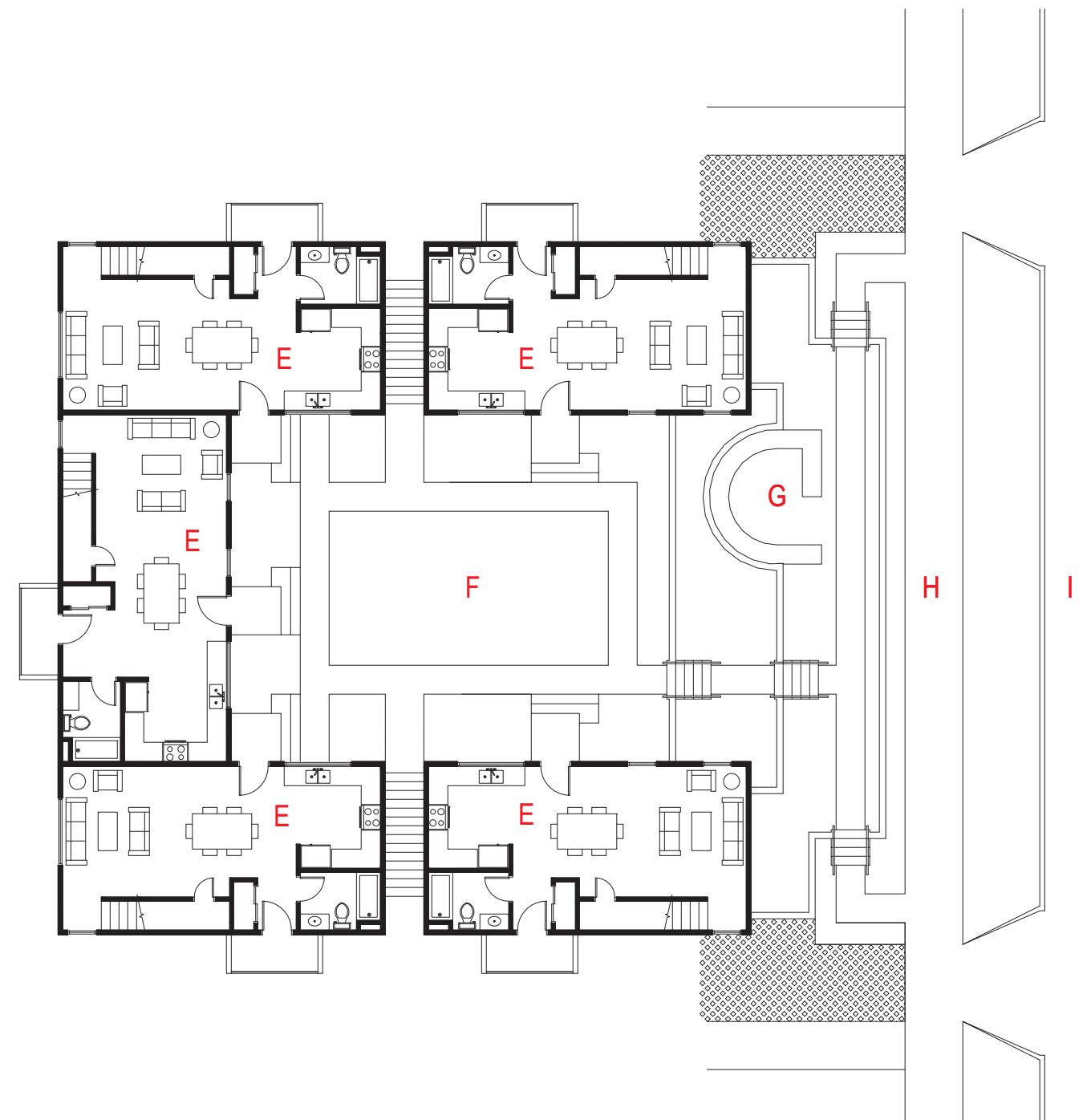
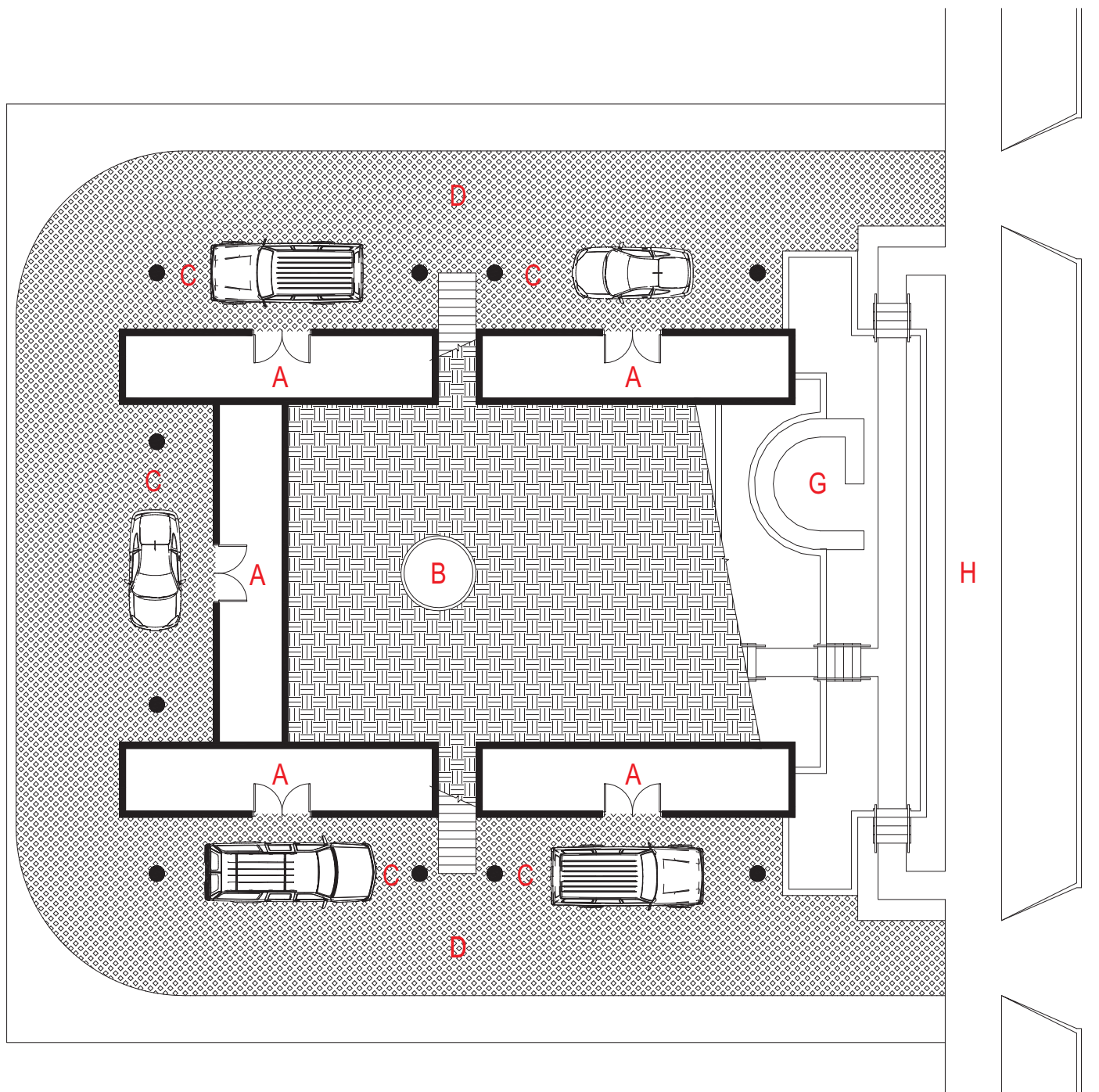
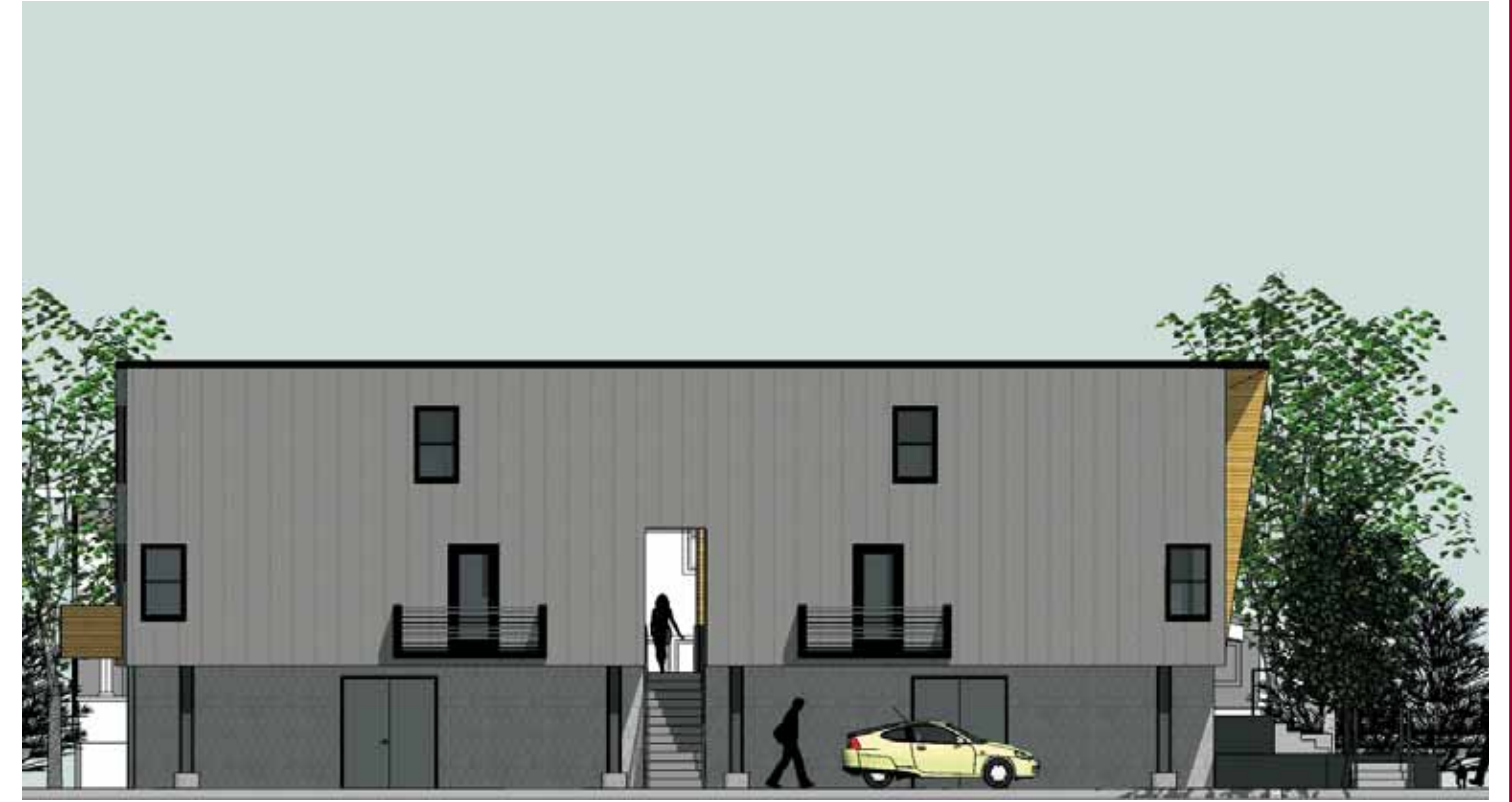
TITLE: **TERRACE GREEN**

NARRATIVE: THIS HOUSING COMPLEX CONTAINS FIVE LIVING UNITS WITH THREE BEDROOMS AND TWO FULL BATHROOMS EACH. USING CONDOMINIUM STYLE OWNERSHIP ALLOWS FOR A COMPACT DESIGN. THIS REDUCES MATERIALS, COST, AND ENVIRONMENTAL IMPACT. FURTHER SAVINGS ARE REALIZED THROUGH THE USE OF STANDARD WINDOWS AND DOORS, AS WELL AS A DESIGN THAT PERMITS FLEXIBILITY IN IT'S CONSTRUCTION. THE TERRACED COMMON GREEN SPACE FEATURES SEATING NEAR THE SIDEWALK.

DATA:

UNIT SQUARE FOOTAGE: 1,532 S.F.
 TOTAL SQUARE FOOTAGE: 7,920 S.F.
 PERCENT OF BUILDING COVERAGE: 32.5% (ACTUAL FOOTPRINT 14.5%)
 MAXIMUM BUILDING HEIGHT: 27'-6"
 TOTAL NUMBER OF UNITS: 5 (3 BEDROOM W/ 2 FULL BATHROOMS)

CREATE MULTIFAMILY HOUSING THAT BLENDS WITH THE SCALE AND RHYTHM OF AN EXISTING SINGLE FAMILY RESIDENTIAL NEIGHBORHOOD



SITE PLAN AT PARKING LEVEL

SITE PLAN AT COURTYARD LEVEL

A - UNIT STORAGE / MECHANICAL SPACE
 B - CISTERN FOR RAIN WATER HARVESTING

C - UNIT PARKING SPACE
 D - PERVIOUS PAVEMENT

E - LIVING UNIT
 F - COMMON GREEN

G - SEATING AREA
 H - PUBLIC SIDEWALK

I - PUBLIC STREET

