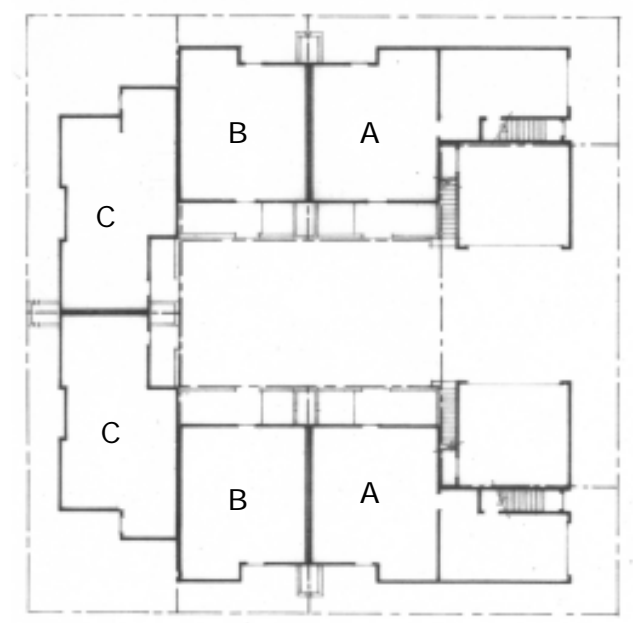
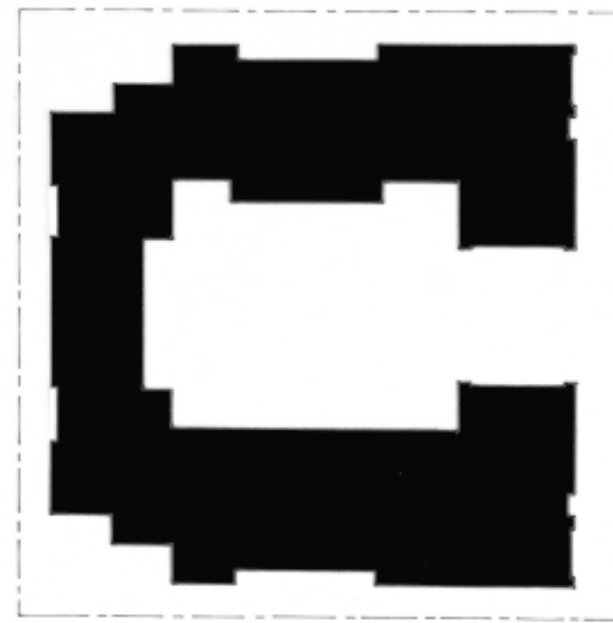


**Category: Inner Portland Infill Site
Portland Courtyard Housing Design Competition**

Narrative

The design proposes a compact courtyard layout that provides a balance between density and open space while being compatible with the surrounding neighborhood. Design parameters included maximizing courtyard size and ensuring flexibility of uses for children and adults. Interior and exterior relationships were addressed by providing private and semi private outdoor spaces for each unit with balconies, decks, low walled gardens and rear gardens. Additionally, two second story terraces are provided at the entry for gatherings and play space in inclement weather. Sustainable solutions include addressing solar access to the courtyard and units with an east west orientation, maintaining a green edge for storm water treatment and storm water planters, and permeable paving. Parking was conceived to limit curb cuts, creating a pedestrian dominated main entry and frontage while maximizing safety and convenience for children and drivers.

Data: Lot coverage: 52%, Total number of units: 6
3 bdrms- 2 1/2 baths, 3 bdrms -1 1/2 baths, 2 bdrms with study and 1 1/2 baths.
Max. building height: 21'
Square footage: Unit A: 1416 sf, Unit B: 1048 sf/1072 sf, Unit C: 1367 sf Total sf: 9250 sf



Proposed Parcels



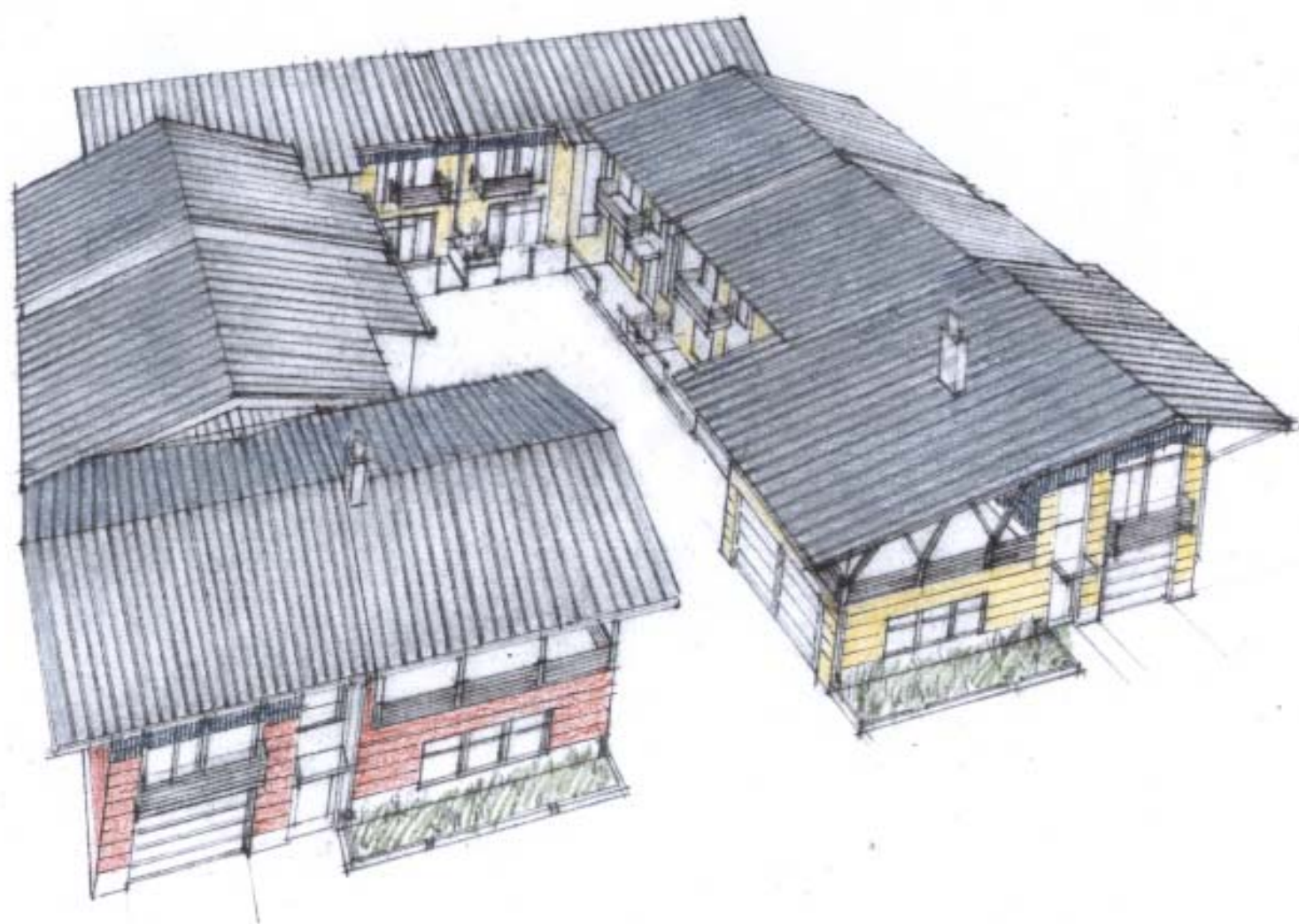
East/West Section through courtyard



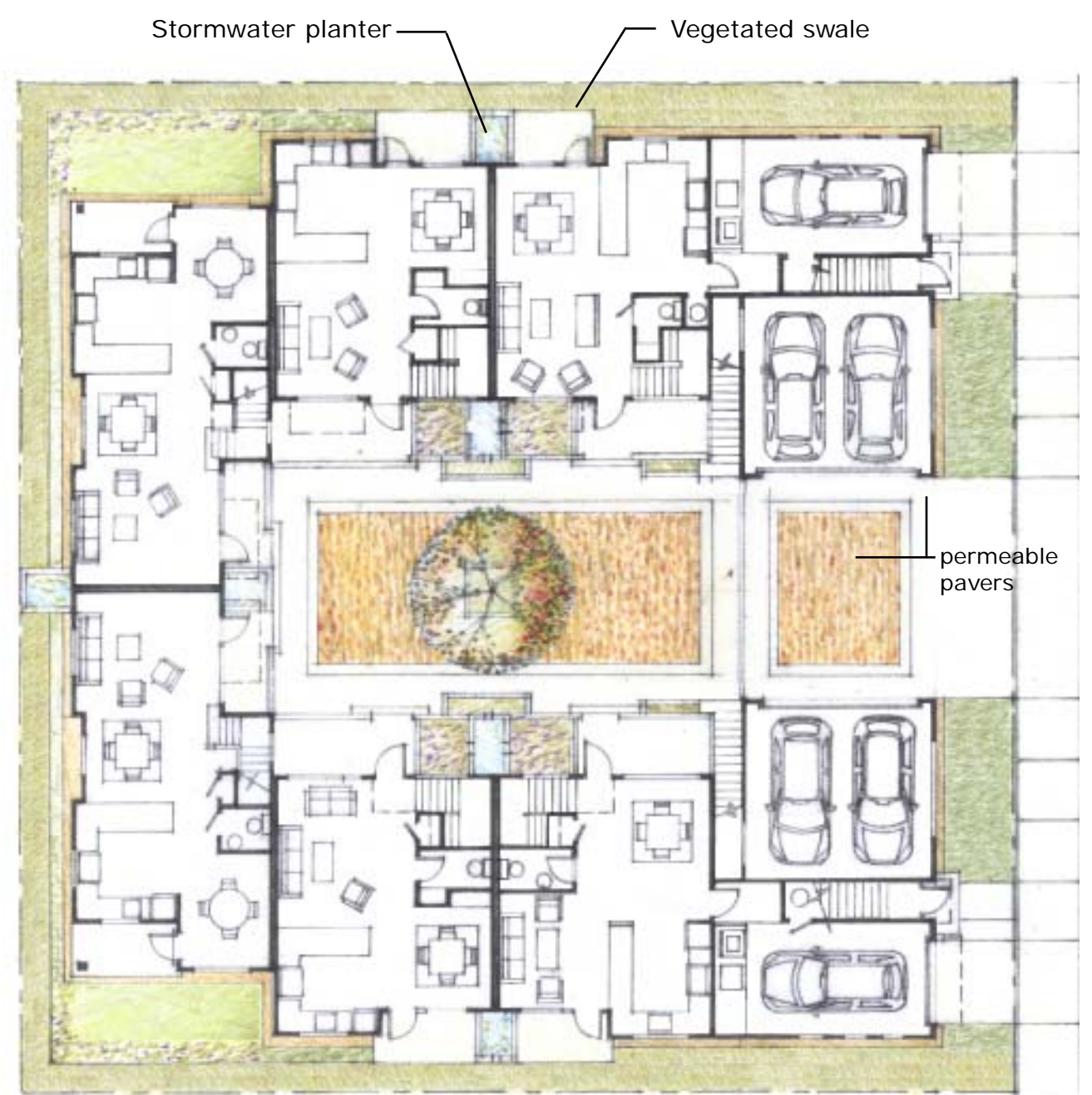
North/South Section through courtyard



Courtyard view looking Southeast.
The gradual transition from public to private spaces allow for a variety of activities.



Aerial view of proposed building massing



First Floor Plan

