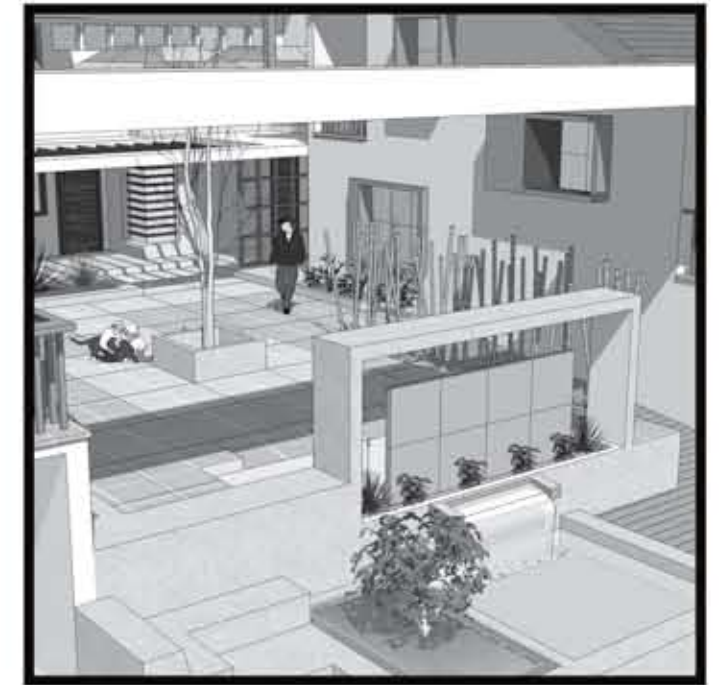
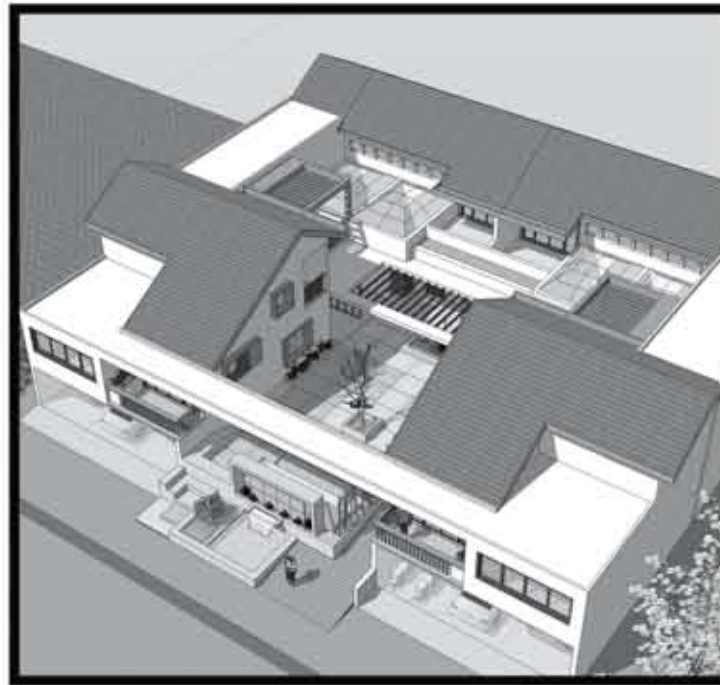


PORTLAND COURTYARD HOUSING DESIGN COMPETITION

SITE: INNER PORTLAND INFILL SITE
 PLOT SIZE: 100' X 100'
 HOUSING UNITS: 6 DUPLEX UNITS

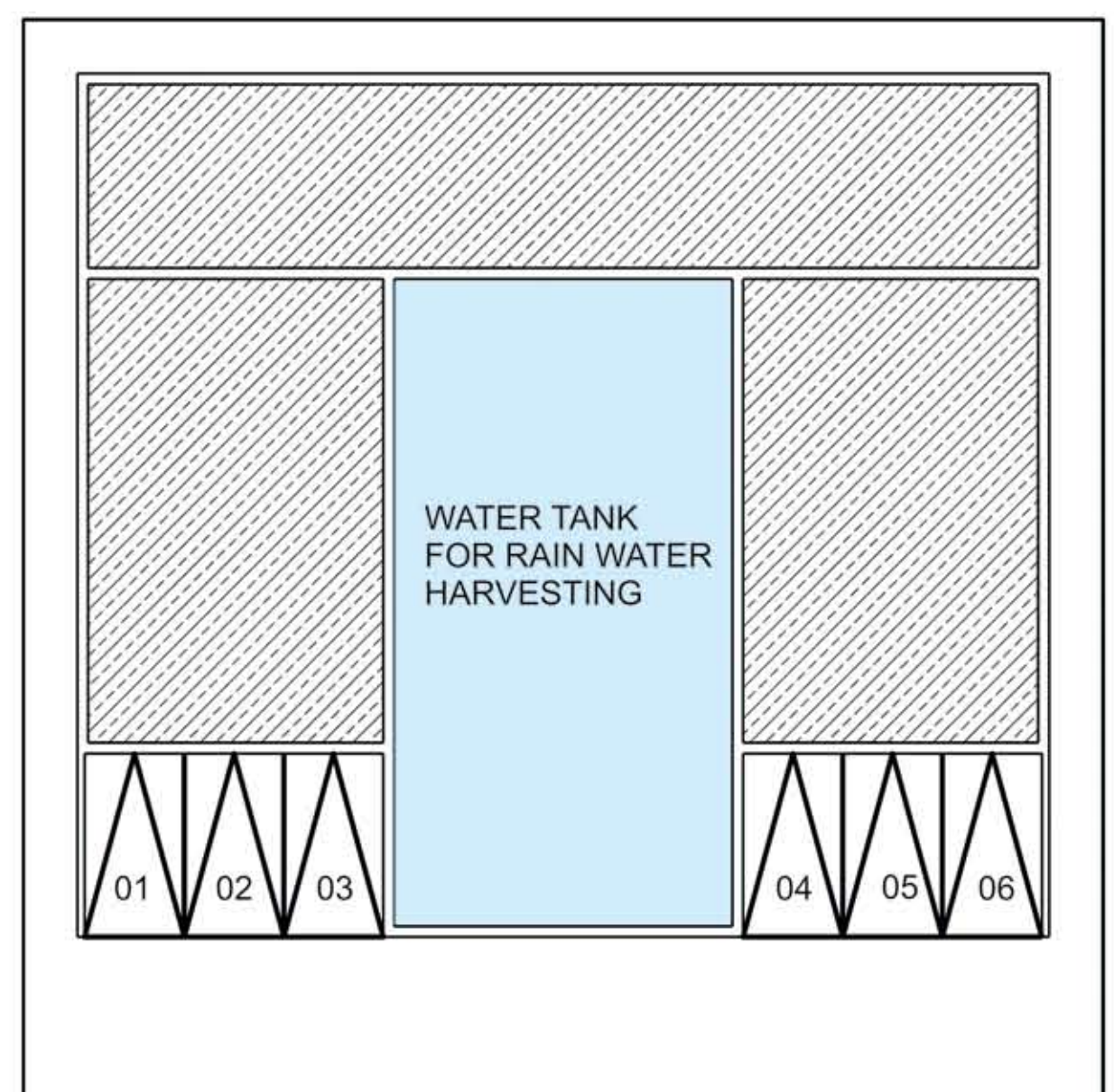
THE PROJECT EXPLORES THE POSSIBILITY OF ACHIEVING SIX DUPLEX UNITS ARRANGED AROUND CAREFULLY SCALED CENTRAL COURTYARD. EACH DUPLEX UNIT HAS A TERRACE WHICH OVERLOOKS THE COURTYARD THUS ESTABLISHING VISUAL CONNECTION. THE EAST SIDE TREATMENT OF THE COURTYARD ENSURES PRIVACY WITHOUT COMPROMISING THE OPENNESS OF THE COURT. THE RAISED COURTYARD WILL ALSO SERVE AS UNDERGROUND RAIN WATER HARVESTING TANK. EACH DUPLEX UNIT CAN EITHER BE RENTED OR OWNED BY A SINGLE FAMILY.



SOUTH EAST VIEW SHOWING APPROACH



AERIAL VIEW OF THE COURTYARD HOUSE



PARKING LEVEL PLAN  0 5 10 20 ft