

INNER PORTLAND INFILL SITE

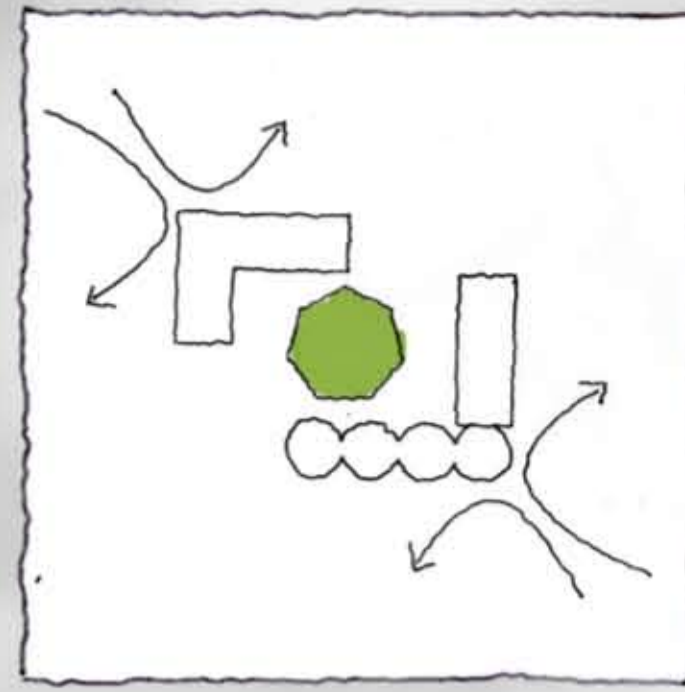
ALWAYS GREENER

Grass is perfect for picnic baskets, touchdowns and playing fetch, so why lose it? Development can aspire to provide families with adequate indoor living facilities, but all too often, outdoor facilities are treated as leftover space. Medians. Side Yards. Wide enough to ensure that constant maintenance is required, but rarely large enough for anything else. Families need that space - to play, to watch and to grow - together. Imagine. Urbanism based on a 7 year olds' budding curve ball.

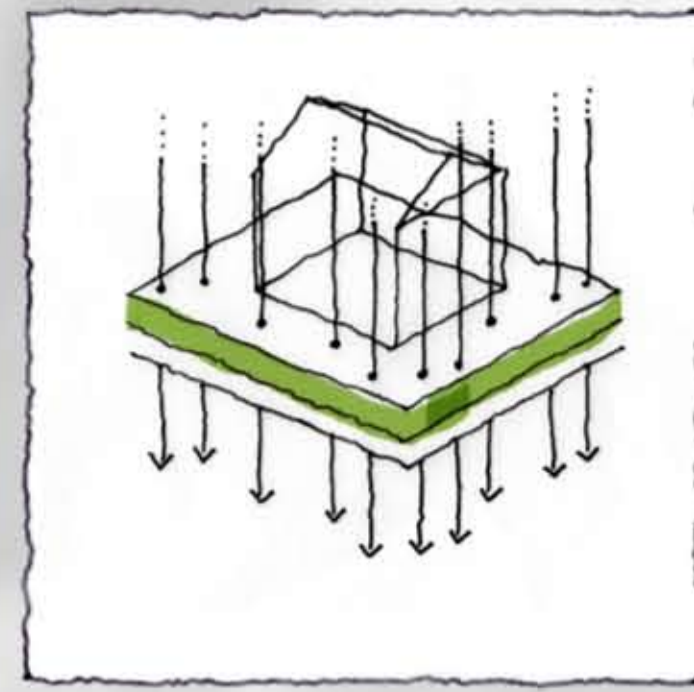
UNITS A,B: 1,250 SF

UNITS C,D: 975 SF

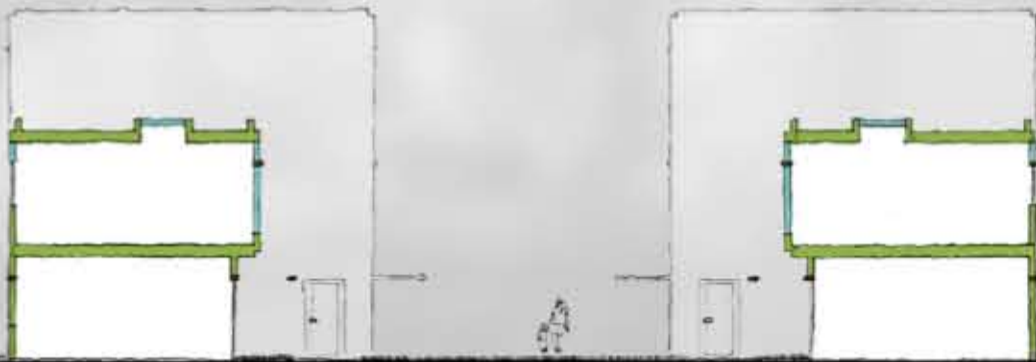
UNITS E,F: 1,500 SF



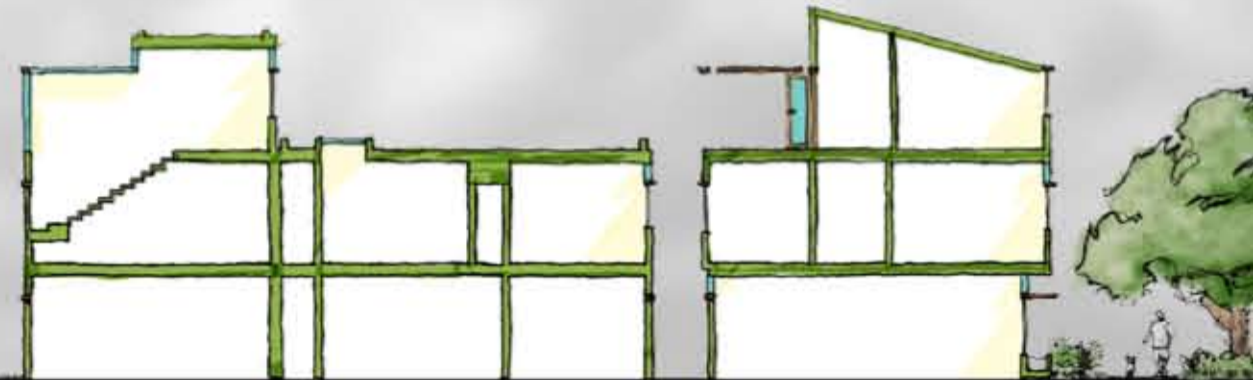
climatic protection



maximize infiltration



section looking west



section looking north



view from patio

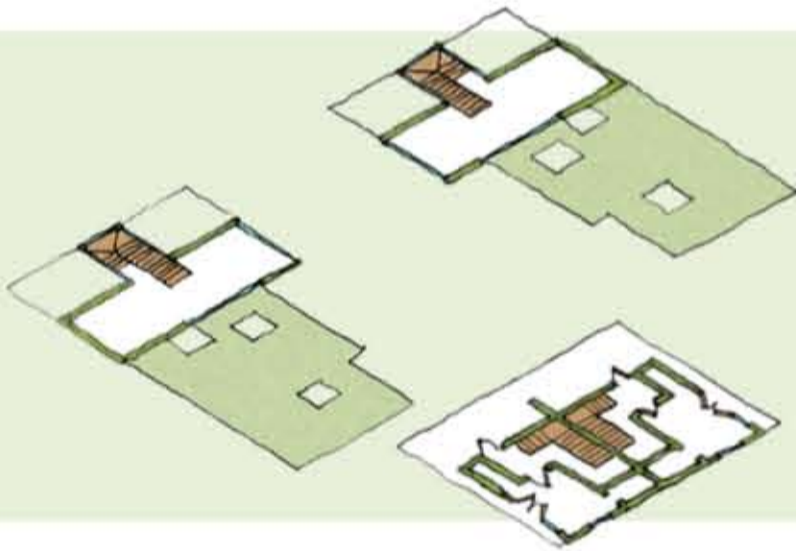


view in courtyard

third floor
units a or b
bed, bath
sundeck

units c or d
green roof

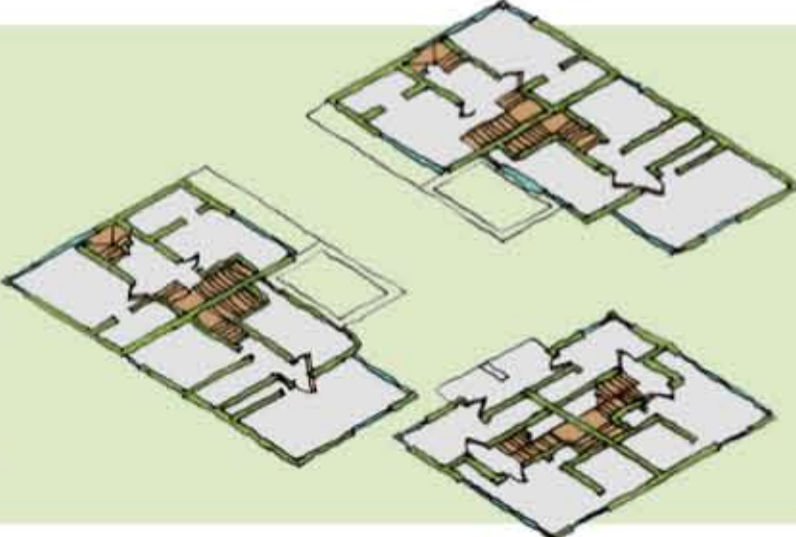
units e or f
master bed, bath



second floor
units a or b
master bed, bath
bed, bath

units c or d
two beds, one bath
master bed, bath

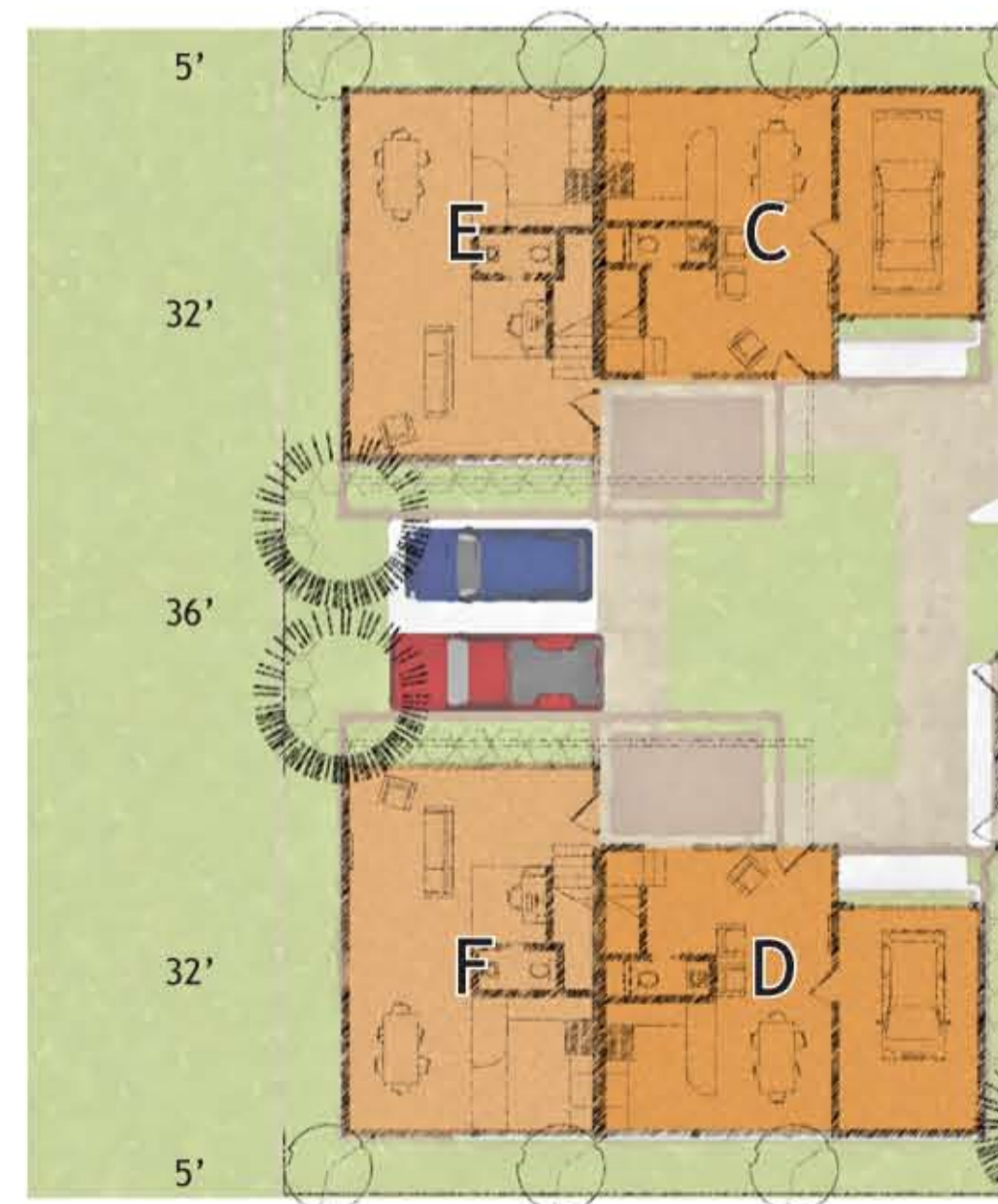
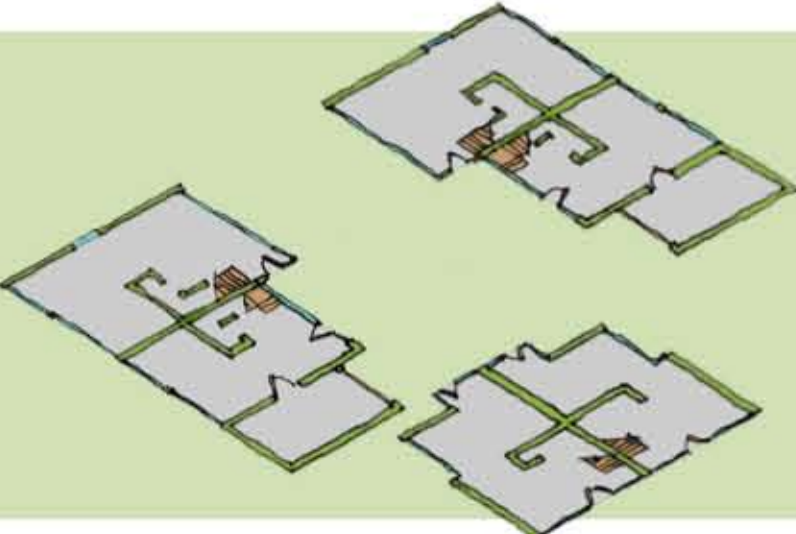
units e or f
two beds, one bath



first floor
units a or b
living, dining

units c or d
living, dining

units e or f
living, dining



first floor plan

