

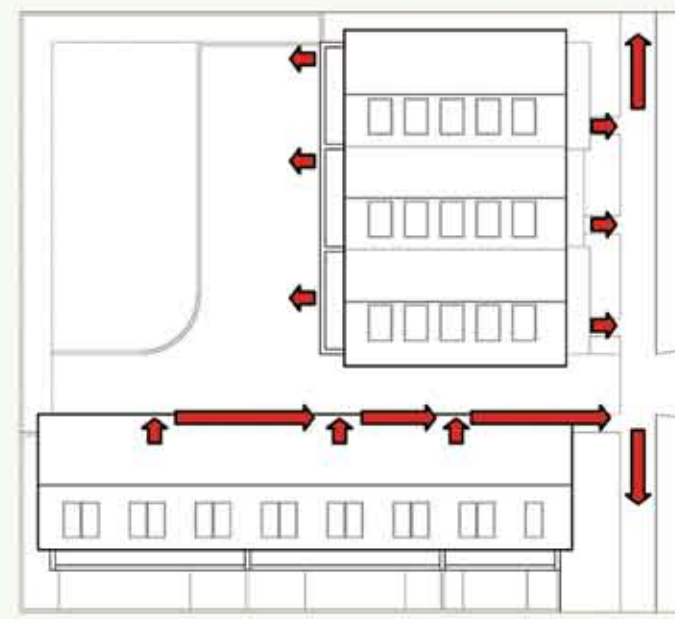
Inner Portland Infill Site
(100'-0" x 100'-0")

Wooden Court

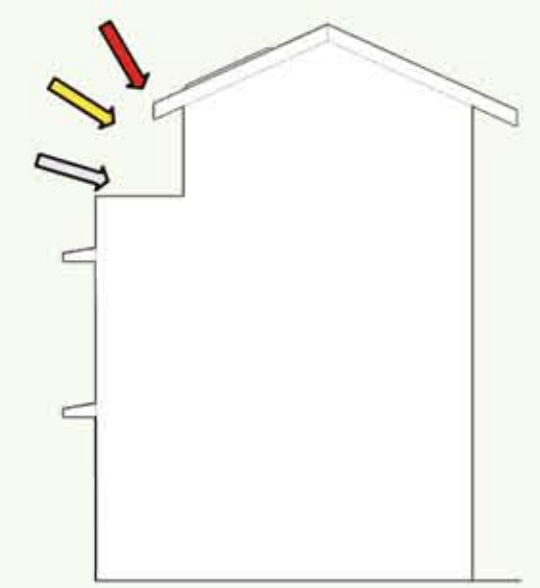
Unit 1: 3 BR/3 BA	1,665 sf
Unit 2: 3 BR/3BA	1,524 sf
Unit 3: 3 BR/3BA	1,649 sf
Unit 4: 2 BR/2BA	1,497 sf
Unit 5: 5 BR/ 4.5 BA	1,800 sf
Unit 6: 5 BR/ 4.5 BA	1,784 sf
Total:	9,919 sf

Building Coverage:	48%
Maximum Height:	32'-6"
Total Units:	6

Successful infill development improves upon the neighborhood in which it is built. This design encourages human interaction in an urban, environmentally sensitive setting. Individual yards and terraces fulfill the needs of privacy and ownership, while the pedestrian experience and the shared open space provide safe social stimulation. The sun and rain are harvested and diverted to maximize onsite energy and water conservation year-round. The buildings' scale integrates with the neighborhood, yet the individual character of each unit is maintained with undulations and a natural material palette. The combined mass, stacked plumbing, and standardized materials and layouts make these units affordable for both builders and working families.



Pedestrian Access



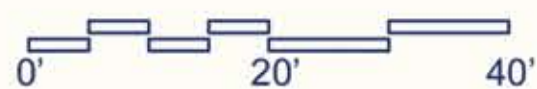
Solar Panels + Overhangs
■ Summer
■ Spring/Fall
■ Winter



Front Elevation from Across the Street



Site Plan
1/16" = 1'-0"



First Floor Plan
1/16" = 1'-0"

