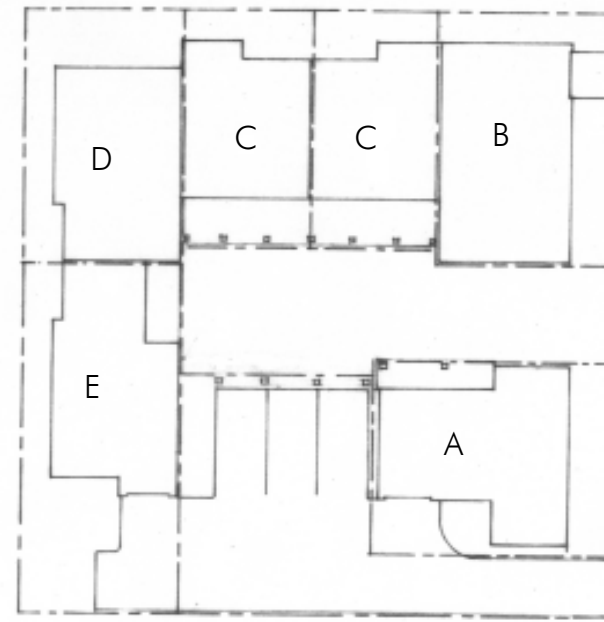


**Category: Inner Portland Infill Site**  
**Portland Courtyard Housing Design Competition**

**Narrative**

The design emphasizes creating an open, light filled courtyard and units with year round sun exposure. Larger volumes face the south with a grand double height arcade with a highly articulated parking structure to the north. Building height is limited to two stories to ensure compatibility with the scale of surrounding houses. Sustainability is further emphasized with the use of stormwater planters with downspout and gutter scuppers that visually activate the space with natural fountains. The courtyard space is left largely unprogrammed with permeable pavers and native plantings at the perimeter to allow for flexibility of use. Curb cuts are isolated to the far north and south of the properties, ensuring that pedestrian access is prioritized.

Total # of units: 6 (3 bedroom-2 1/2 baths and 3 bedrooms-1 1/2 baths)  
 Lot coverage: 51% Unit A: 1154 sf, Unit B: 1287 sf, Unit C: 1078 sf,  
 Unit D: 1304 sf, Unit E: 1228 sf. Total sf: 7814 sf. Max. bldg height: 23'



Proposed Property Platting



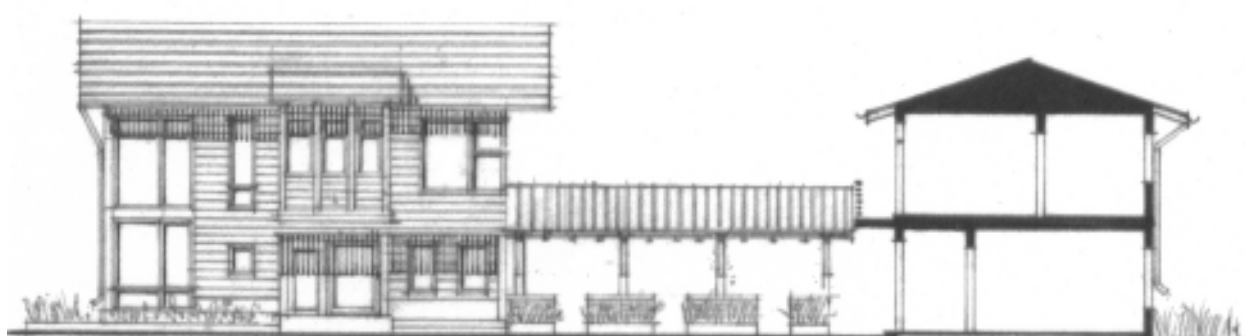
Figure Ground Diagram



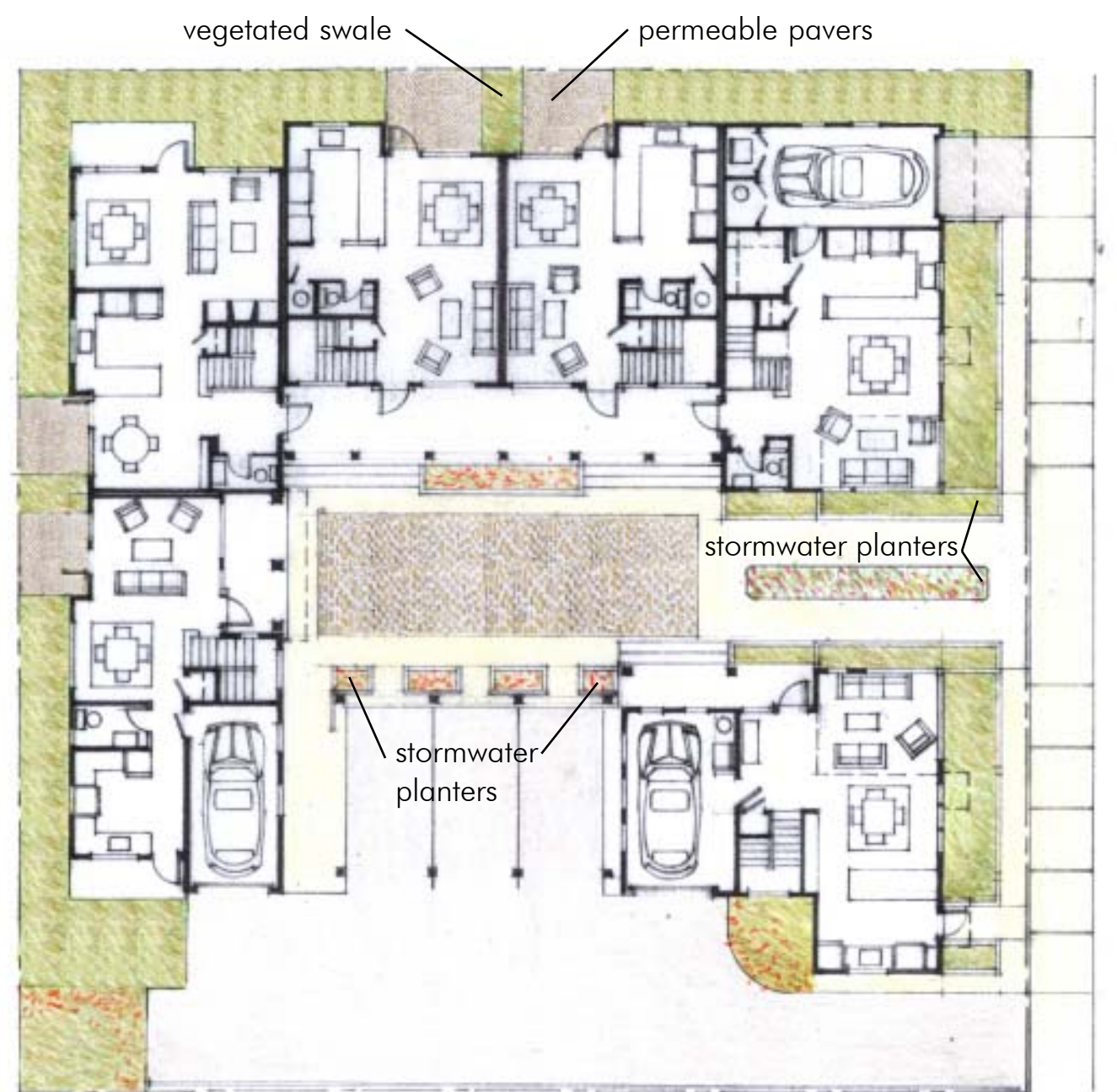
Courtyard view looking west. The sun filled courtyard allows for the flexibility of different uses. The open parking structure on the right provides cover and additional open space when unoccupied. Scuppers on downspouts water native plantings in stormwater planters.



North/South section through courtyard and arcade



East/West section through courtyard



First Floor Plan

