

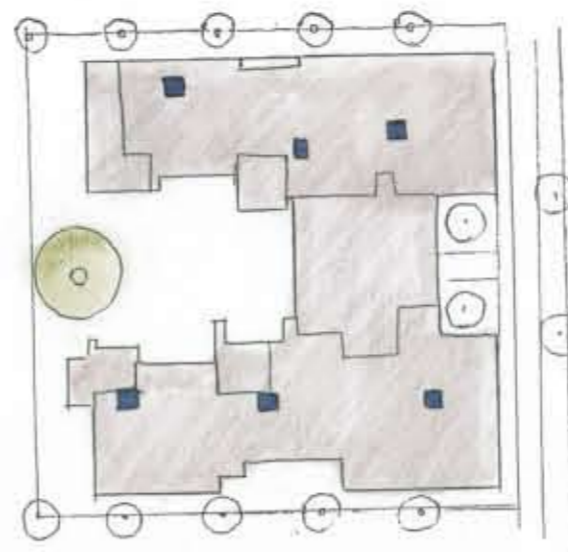
Encompassing Haven

Inner Portland Infill Site
Zone R2

Ownership by:
Co-operative Housing Association

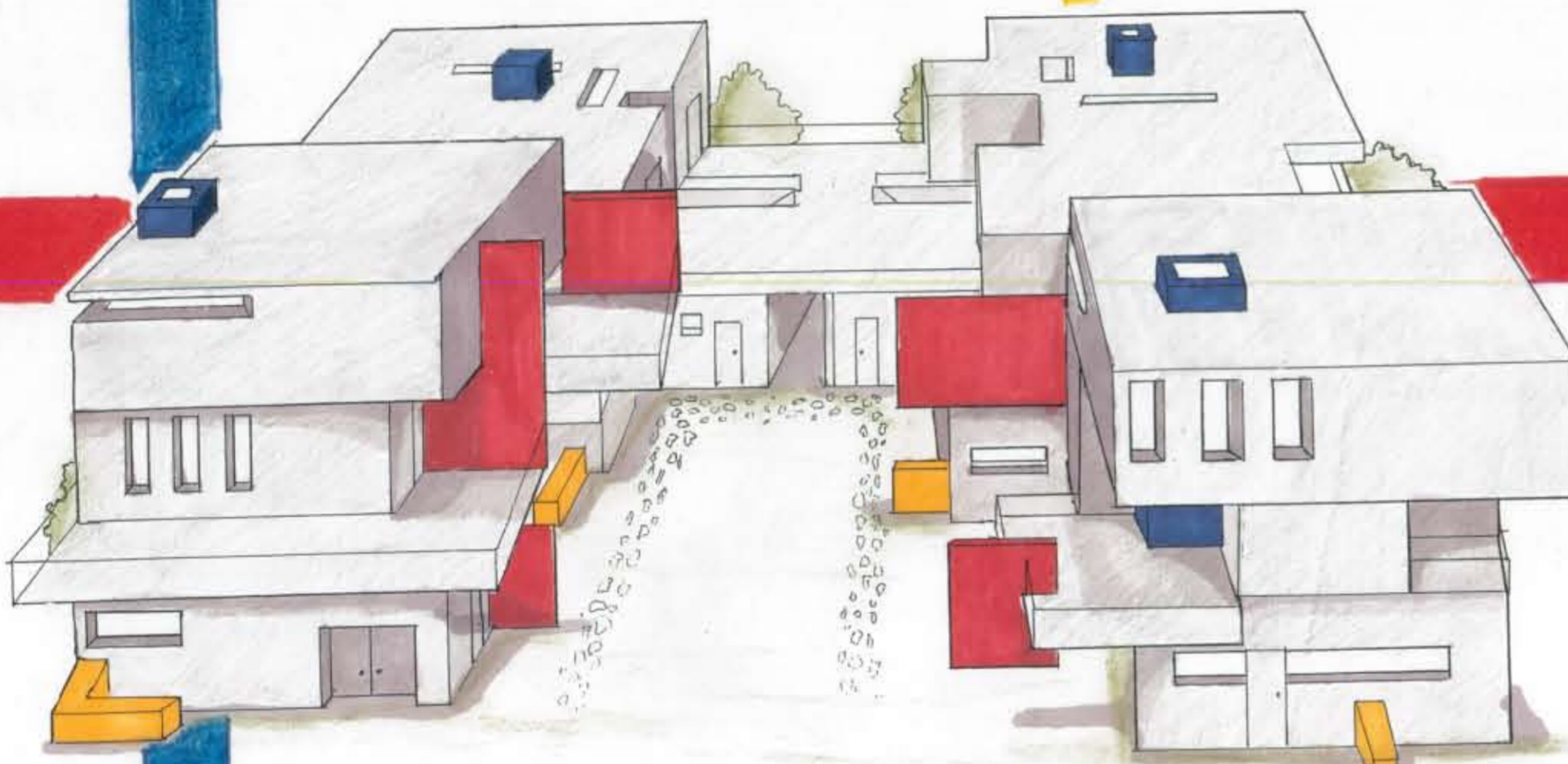
This community focuses on child-friendly design with accent colors of red, blue and yellow, the colors best visible to children. It has interactive walls that can be manipulated creating sculpture and engaging the children. The courtyard has Spaceframe Sculpture Kits that allow families to create sculptures. There is a communal laundry facility and daycare center.

Another important aspect of the design is sustainability. It has eco-friendly bamboo, the structures are made of local Portland fly ash concrete, low VOC paint for the colors, and photovoltaic's are incorporated on the roofs. All the furniture and appliances are energy efficient and sustainable.

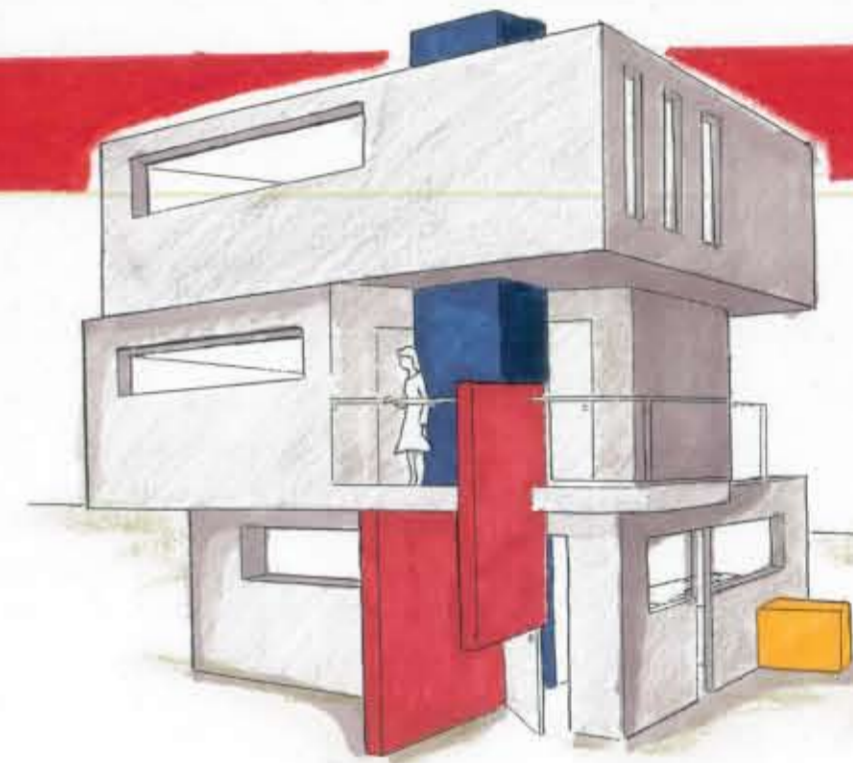


Organization
Both the site and the individual units are organized around a vertical element.

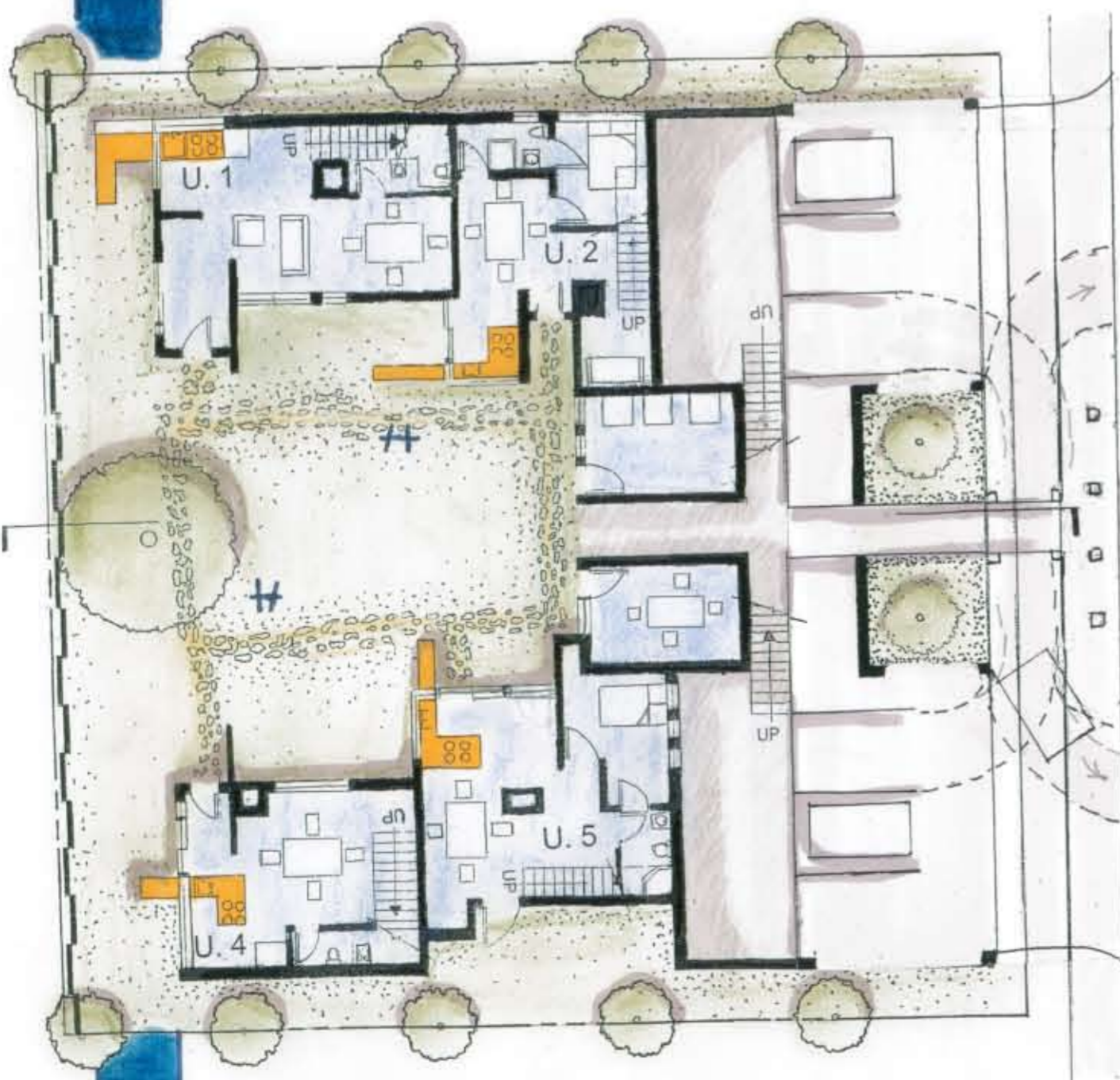
Sun and Wind
The windows and designed around the sun and wind of the hot and cold seasons



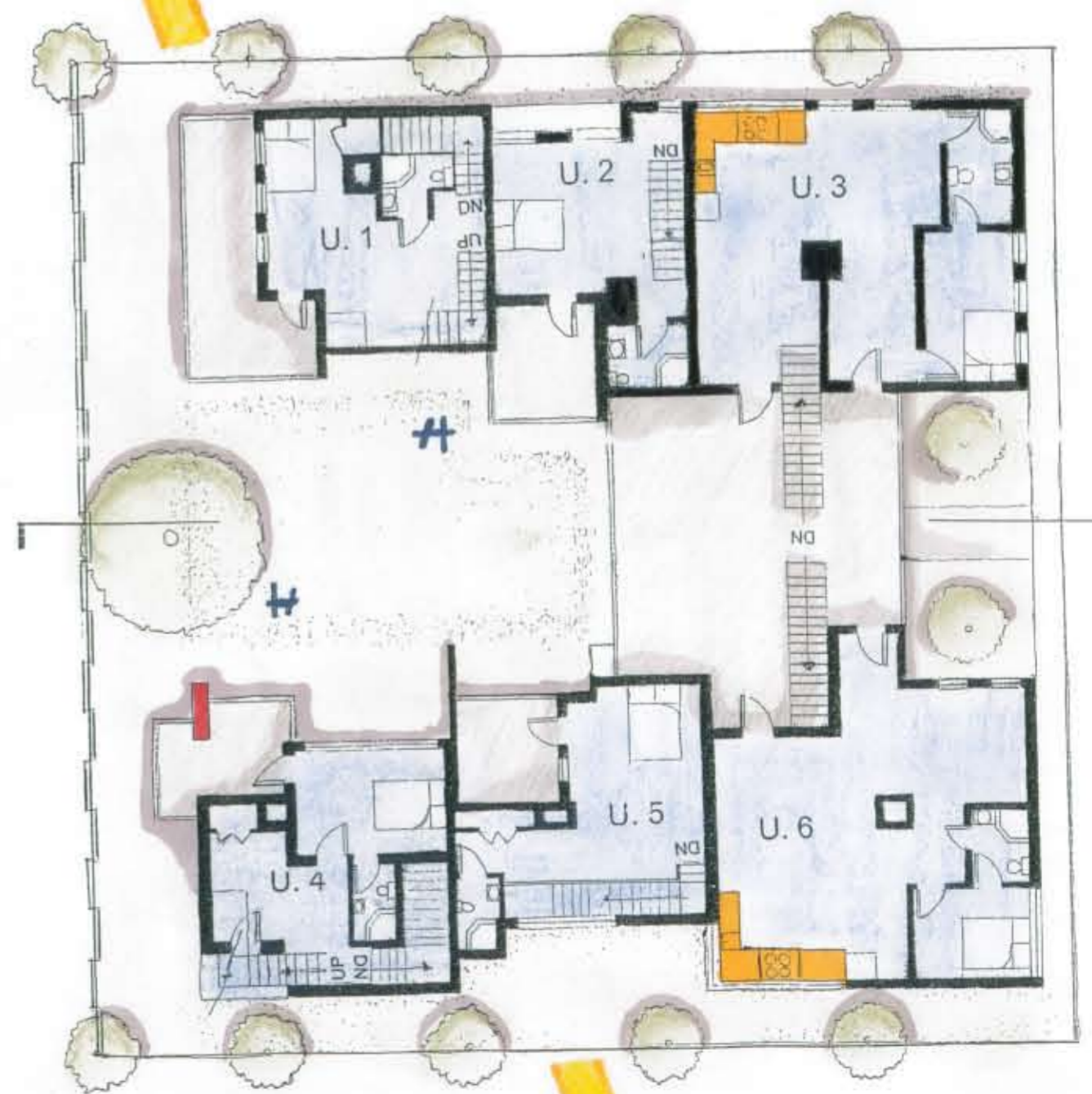
Conceptual View of the Structure



View of Individual Unit



Site Plan and First Floor Plan First Floor: 5,349 ft² (53.4% coverage)



Second Floor Plan 2nd Floor: 4,455 ft²

Unit 1: 1,837 ft²
Unit 2: 1,116 ft²
Unit 3: 1,020 ft²
Community Area: 468 ft²

Unit 4: 1,821 ft²
Unit 5: 1,286 ft²
Unit 6: 1,042 ft²
Parking Area: 2,046 ft²