

# Building Backwards: A reinvention of imaginative design

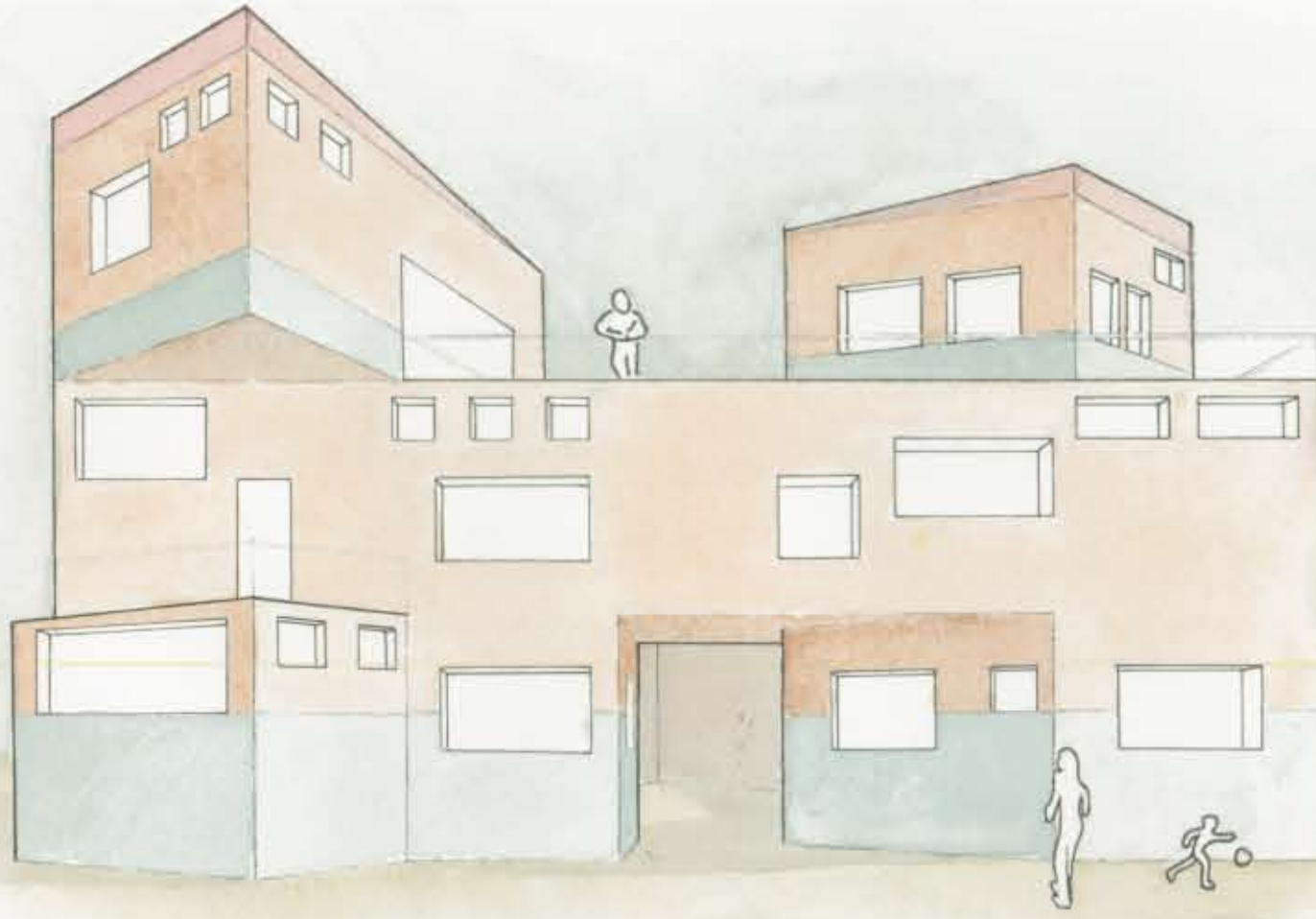
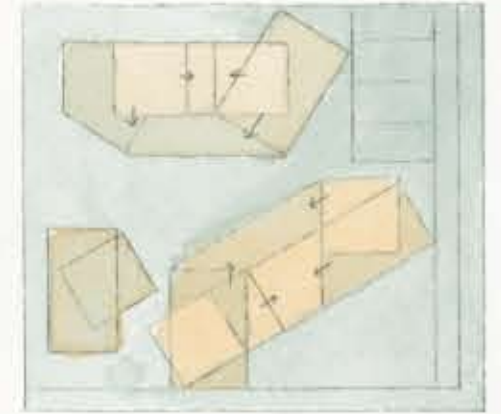
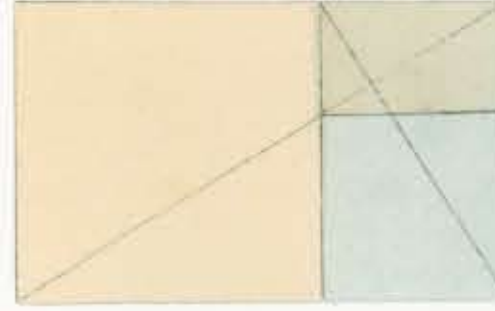
"Family is the foundational building block of all which we are about. It helps center our universe. Family is that which gives us the feeling of connectedness." This quote by Anne Bradford exemplifies the concept on which the design was founded. The goal was to establish a safe and natural atmosphere for families of various sizes and characters. By creating an aesthetic and functional environment, the hope is the perception of affordable housing will be transformed as well. The project is designed using a stacked building block theme giving the overall design a vibrant and youthful expression. A courtyard is designed behind the houses to tie each unit together so there is a continuity and sense of connectedness within the community, however each unit is also separate in order to create privacy and security.

Inner Portland Site - 4 Units To be sold as Condominiums with shared site

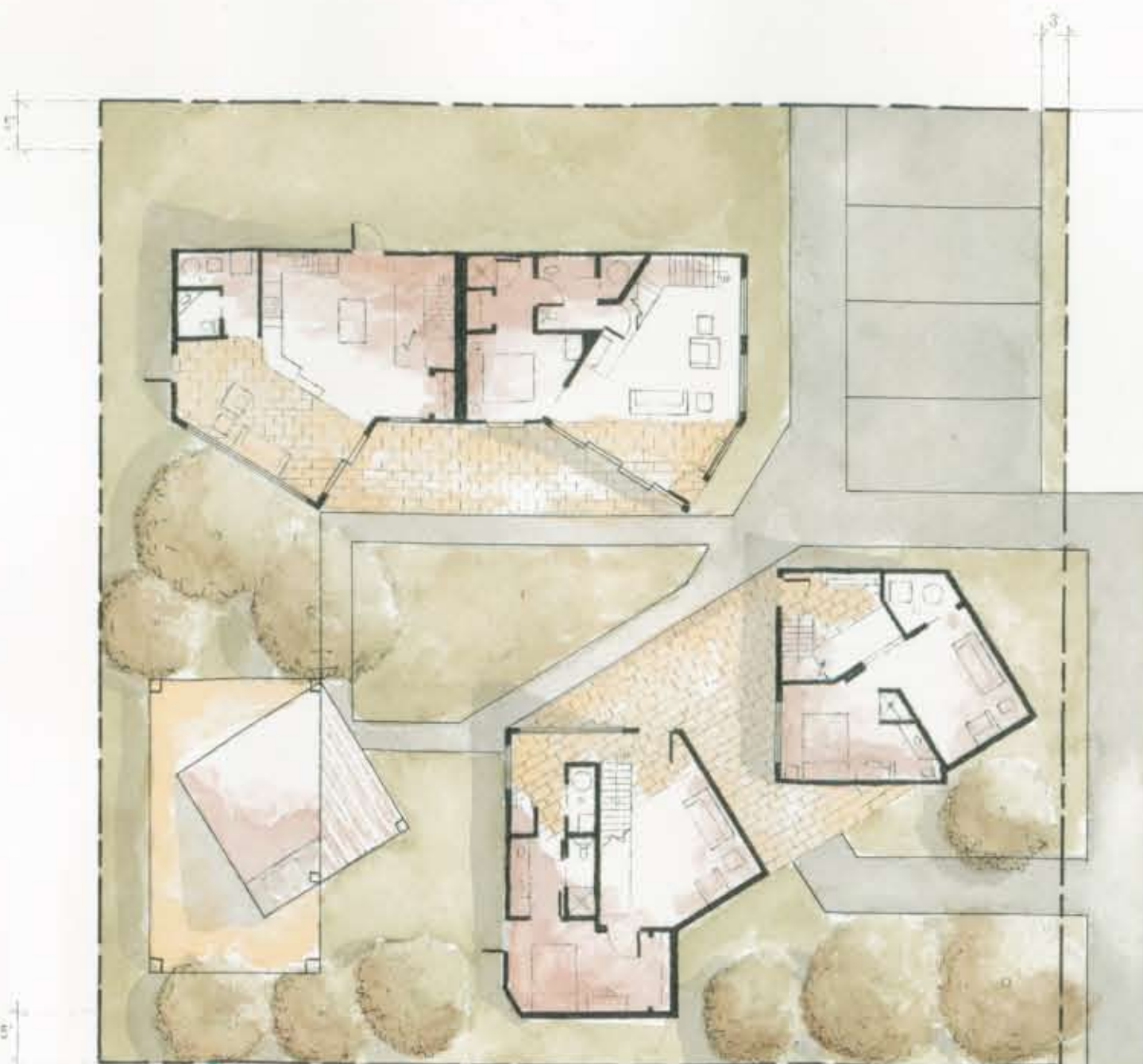
Unit 1: 1,272 sq.ft.    Unit 2: 1,296 sq.ft.    Unit 3: 1,305 sq.ft.    Unit 4: 1,344 sq.ft.

Total square footage: 5,217 sq.ft    Percent of ground coverage: 35%    Maximum Height: 39 ft.

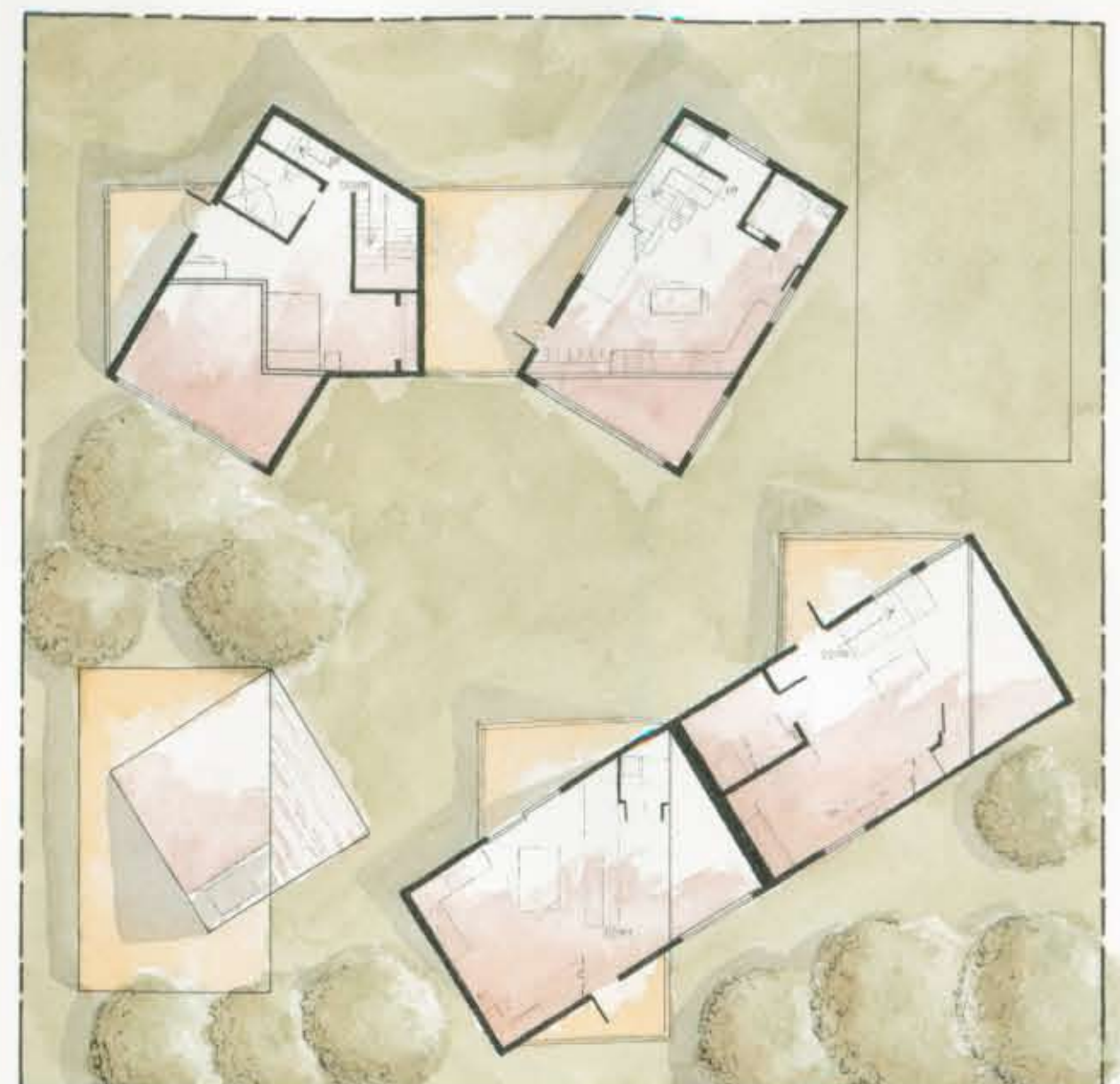
**Geometry:**  
Inspired by the "block" design concept, three orthogonal shapes were created using a common golden rectangle. The blocks were then twisted and turned at angles also derived from the original proportioning system giving each of the units a vertically stacked structure.



View of Public Entry



Site Plan



Second Floor Plan