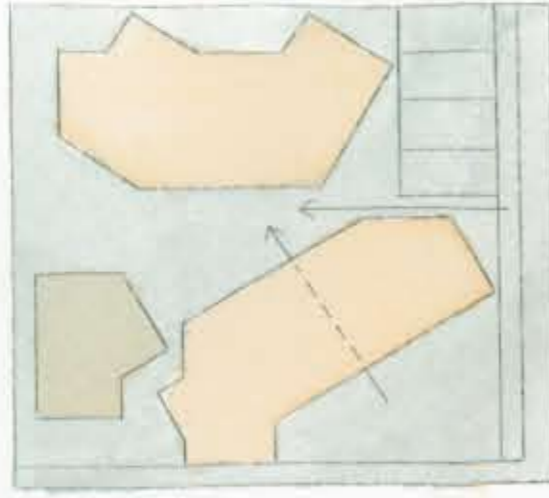


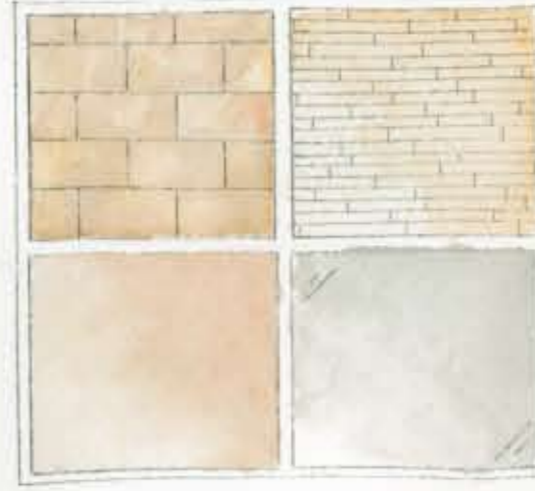
Interior / Exterior Relationships:

The goal was to create a variety of exterior rooms that reflect the same character as those on the interior. Every unit has their own private balcony as well as a shared porch with the connecting unit. Sliding glass doors and large picture windows open to the courtyard so there is minimal distinction between the interior and exterior.



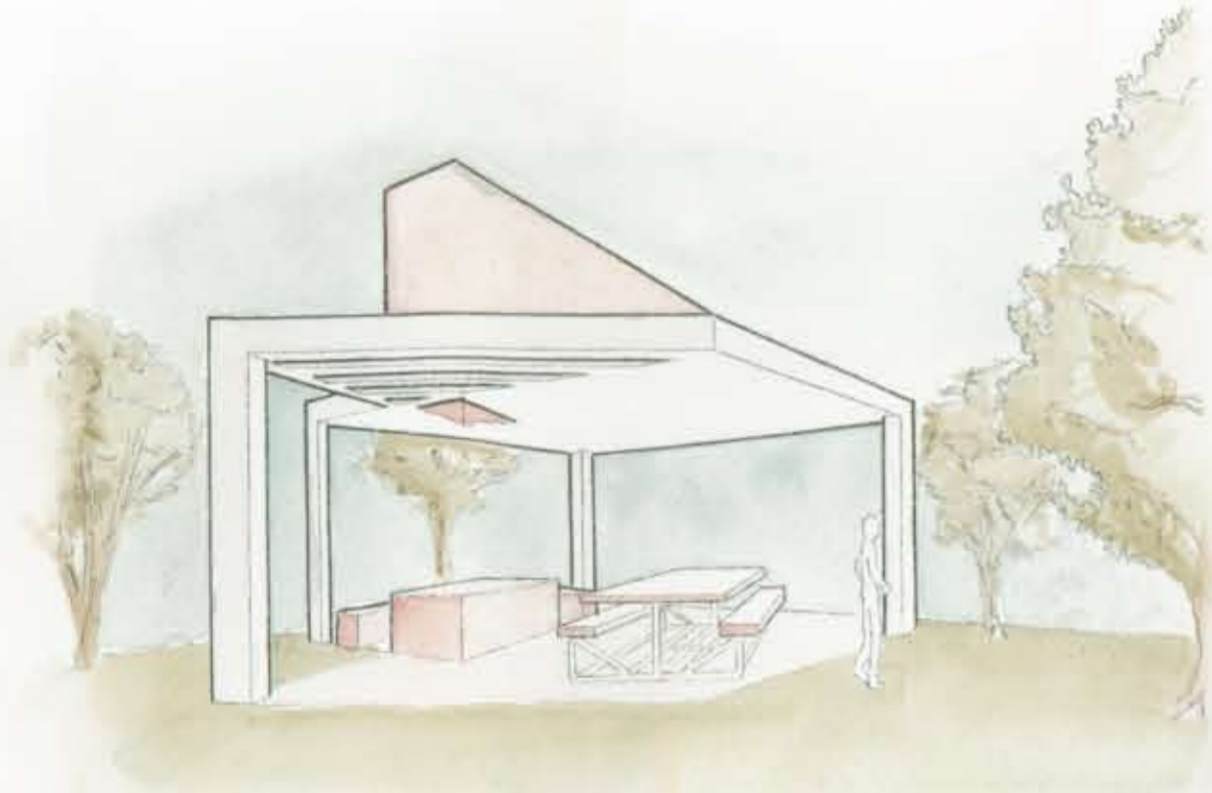
Circulation and Public vs. Private:

There are two entrances into the courtyard. One is private and exclusively for the residents and is placed adjacent to the parking spaces, while the other is a public entrance placed underneath the intersection of two units. These relatively small entrances give the distinct impression of entry but don't necessarily invite outsiders. Each unit is separate to give the families privacy, but there is a shared courtyard to give the community a sense of connectedness.

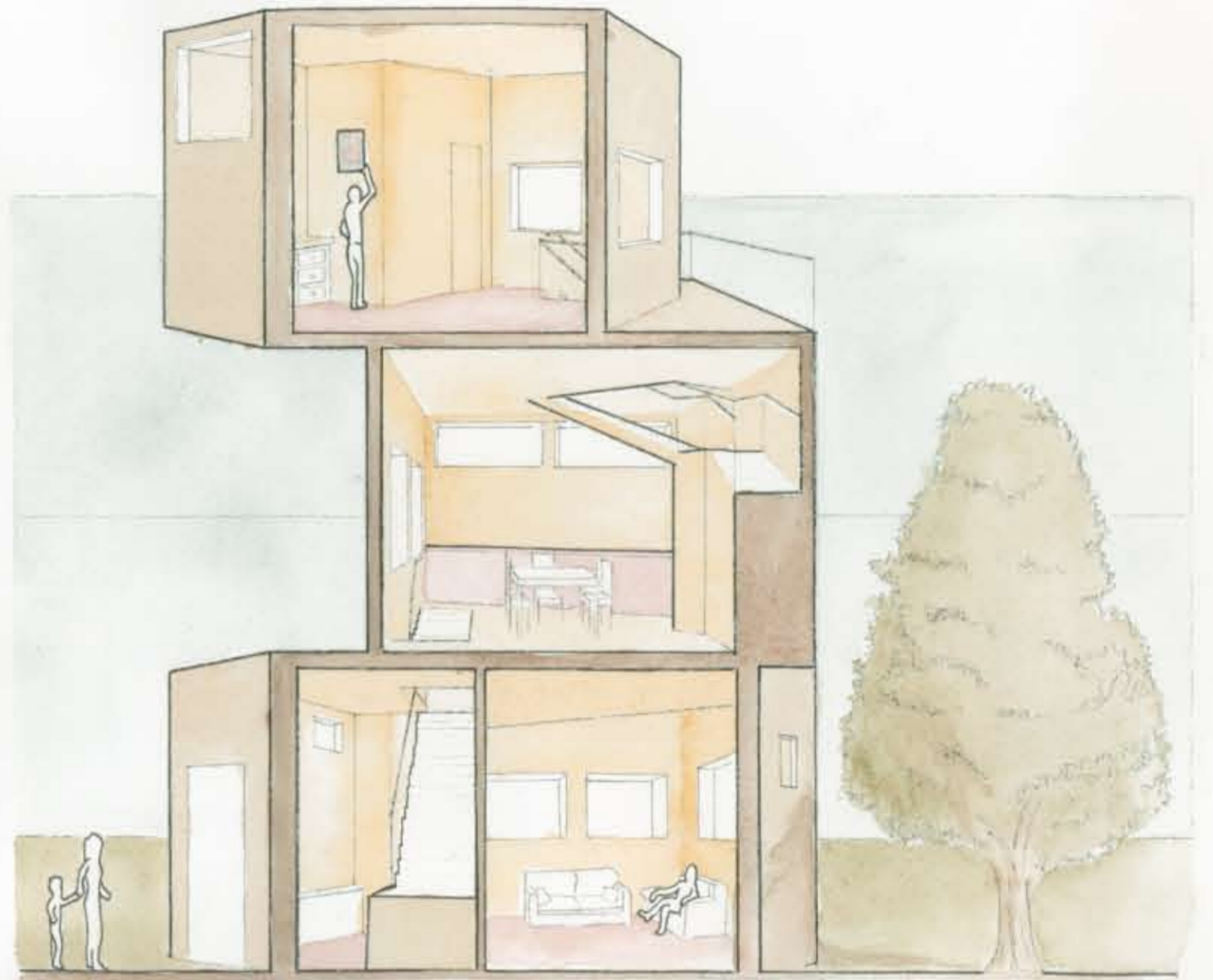


Materials:

In an attempt to reflect the character of the city, a color palette of deep, rich and vibrant tones was chosen. These are placed in selective places to accent the more natural materials found inside and out. Warm-toned slate and stucco are used for the exterior floors and walls, while bamboo floors and warm-toned paint are used in the interior. These materials make the environment appear larger and more spacious and reflect much more light especially during the dark winter months.



View of Courtyard Pavillion



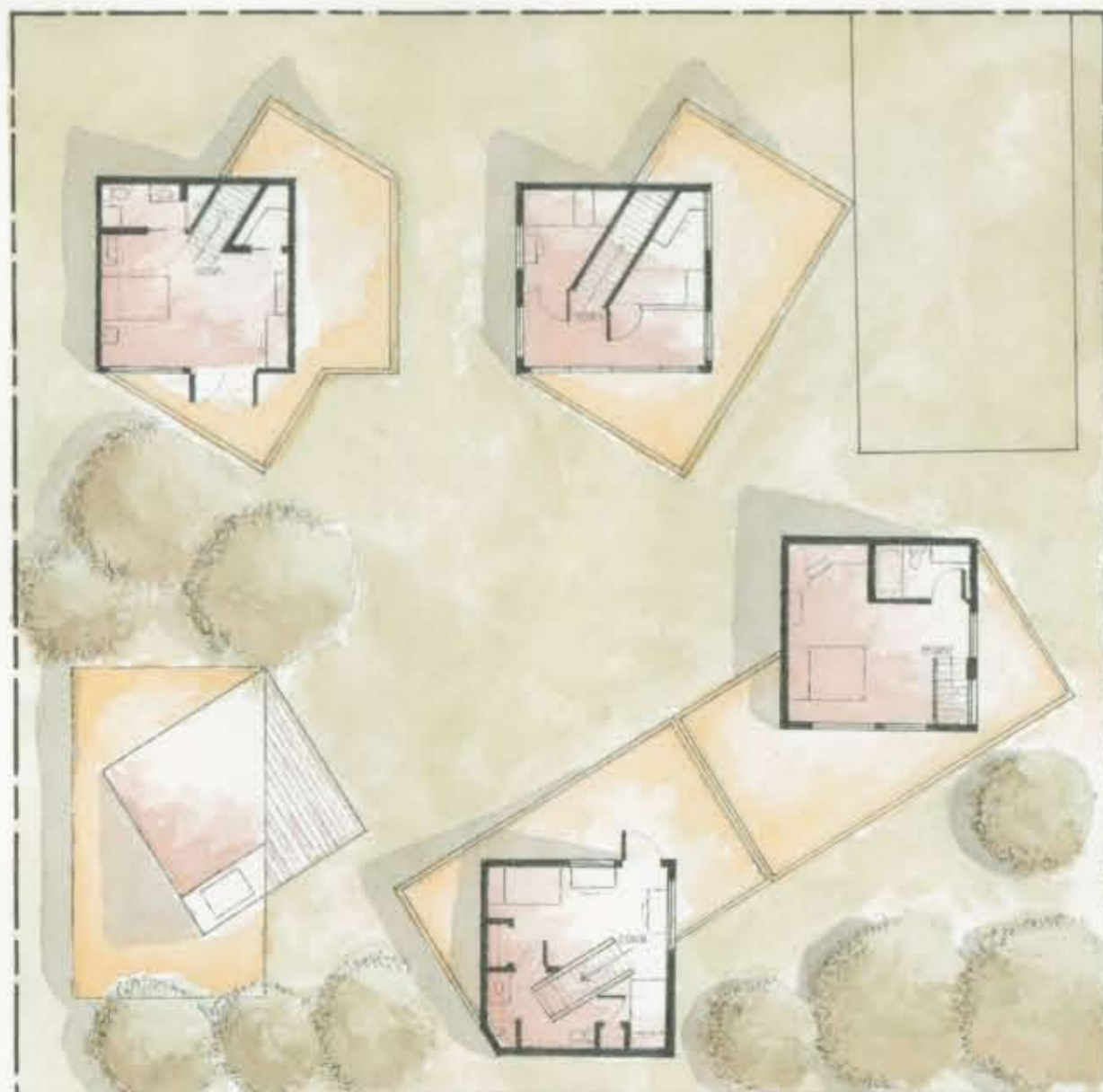
Section Perspective



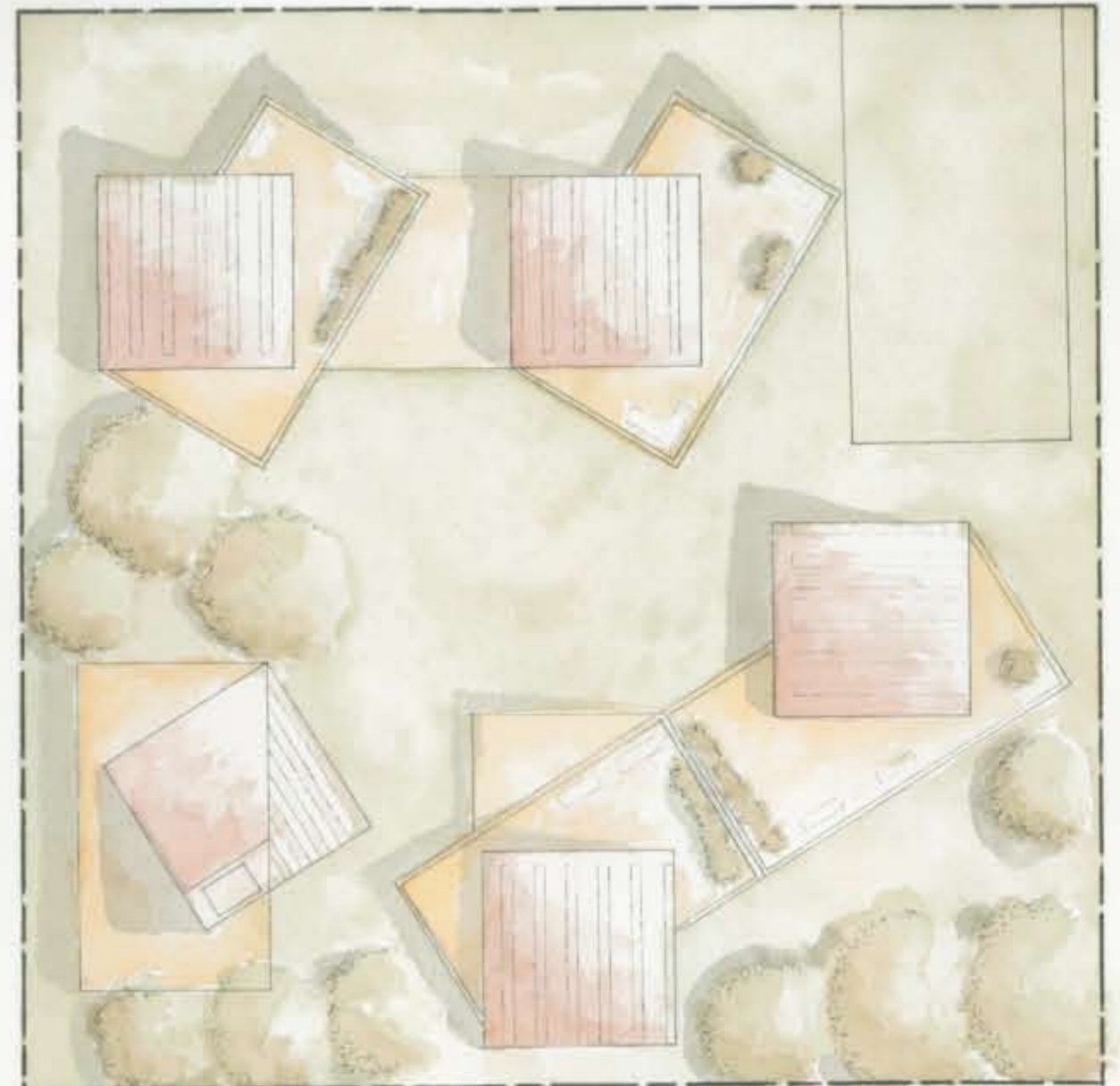
View of Kitchen

Green Solutions:

Working in a progressive and environmentally conscious city, sustainable solutions are a central focus in the design. There is a deliberate integration of natural materials, and green innovations like bamboo flooring, natural day lighting, and stacked ventilation in every unit so residents can easily make the transition to green living in an affordable way. In order to make use of the excess water and conserve energy, green roofs were also added; these not only irrigate the landscaped spaces, but also direct the water away from the buildings for less maintenance.



Third Floor Plan



Roof Plan