

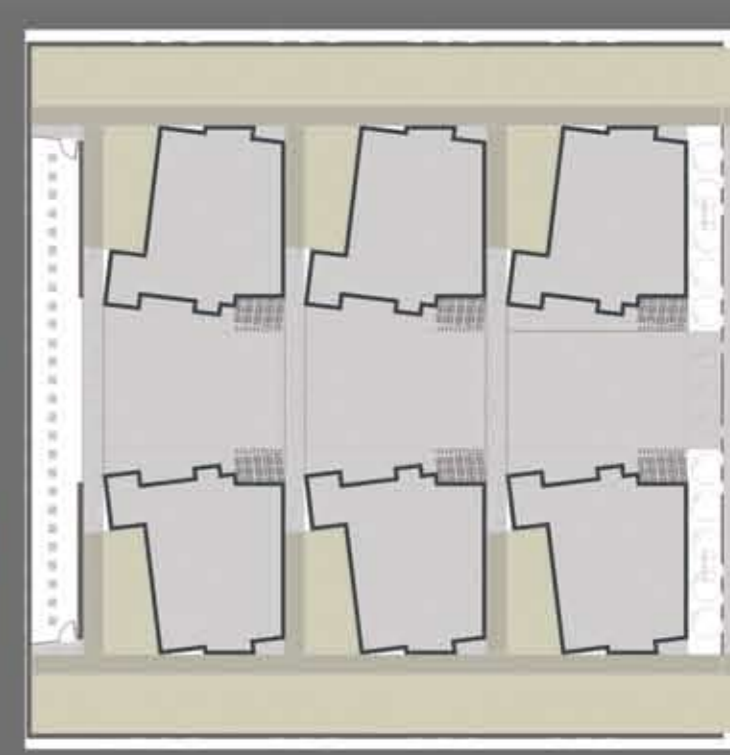
# Portland Courtyard Housing Competition

inner Portland infill site

Shifting grids satisfy the physical necessities of vehicular and human flow while integrating to form the structure of the house. Main entries are identified with the sidewalks and "streets" to the North and South while the courtyard serves as semi-private gathering space. Each house contains a series of public to private zones that traverse both horizontally and vertically. All uncovered paved surfaces are pervious concrete and rooftop rain water runoff is captured for dispersion throughout the community gardens. Natural light permeates every habitable room within the house, minimizing the need for artificial light. Floors are bamboo, exterior materials are cement board siding, decorative CMU, and recycled plastics. Each of the six units is 1,340 sq. ft. and the maximum height reaches 23 feet. There is 8,040 sq. ft. of living space and the building coverage is 50 percent.



contextual massing



[pedestrian] + [vehicular]



[east] elevation perspective



[south] elevation perspective



[west] elevation perspective



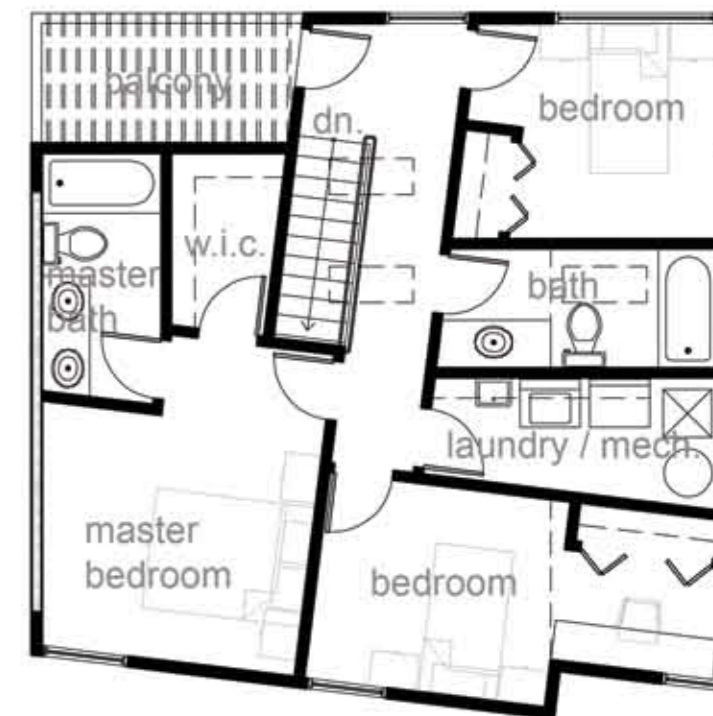
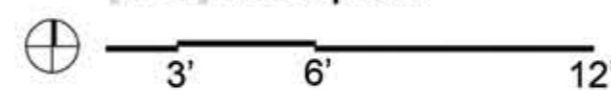
[north] elevation perspective



site plan  
3' 6' 12'



first floor plan



second floor plan

